



LG Tone Infinim HBS-910 Battery Replacement

How to replace the battery on a LG Tone Infinim HBS-910.

Written By: Faizan Naveed



 **TOOLS:**

- [iFixit Opening Tools](#) (1)
- [Phillips #00 Screwdriver](#) (1)
- [Soldering Iron](#) (1)
- [Solder](#) (1)

 **PARTS:**

- [LG Tone HBS-910 Battery](#) (1)

Step 1 — Locate right side.



- Battery is on right side of headset.
- First remove rubber cover on the right side of the headset to uncover the hidden screw.
- Remove screw using Philips PH00 screwdriver.

Step 2 — Disassemble right side.



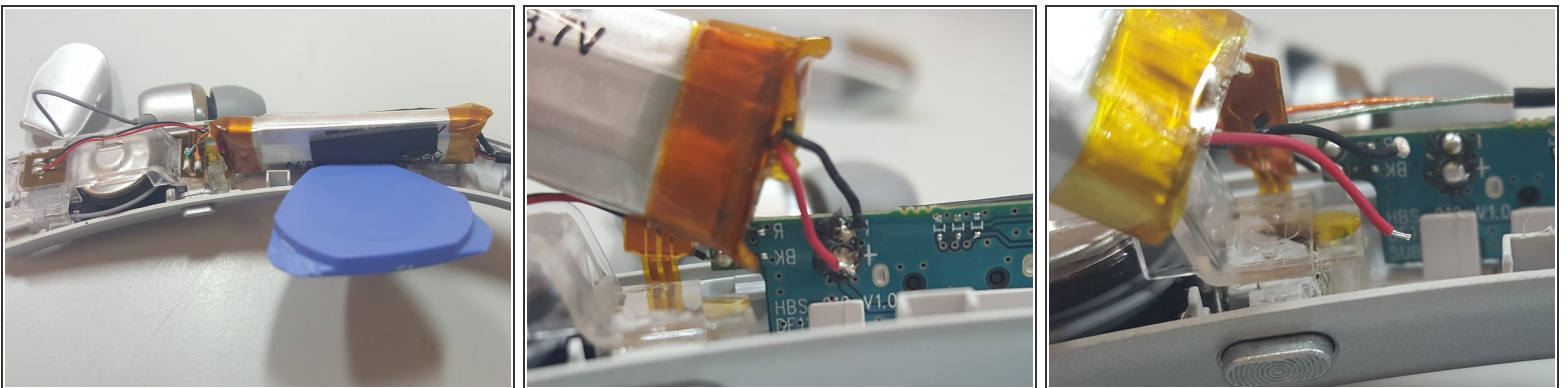
- Use a guitar pick or any opening tool to pry open the right side.

Step 3 — Hidden screw.



- Once you have opened the right side up until the speaker end, there will be a hidden screw that needs to be unscrewed before the right side can be completely disassembled.
- Pry open the speaker back housing with a guitar pick or any opening tool as shown in the picture.
- Once the speaker back housing is lifted, you will see the screw.
- Remove the screw and the whole right side will be disassembled.

Step 4 — Desolder battery.



- Use a non-metal tool to lift the battery out of place so it will be easy to desolder.
- Remember the red wire is positive(+) and the black wire is negative(-).

To reassemble your device, follow these instructions in reverse order.