



# Afterglow Wireless PS3 Controller Trigger Button Replacement

This guide will show how to replace the trigger buttons on a Afterglow Wireless PS3 Controller.

Written By: Aj Coello



## INTRODUCTION

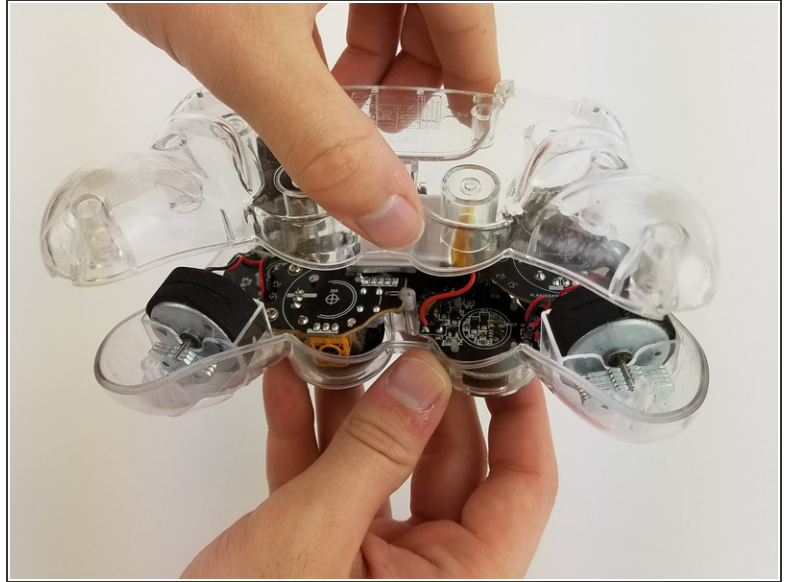
Replacing the trigger button requires the removal of the controller back plate and the careful pulling of the trigger from its housing.

---

### TOOLS:

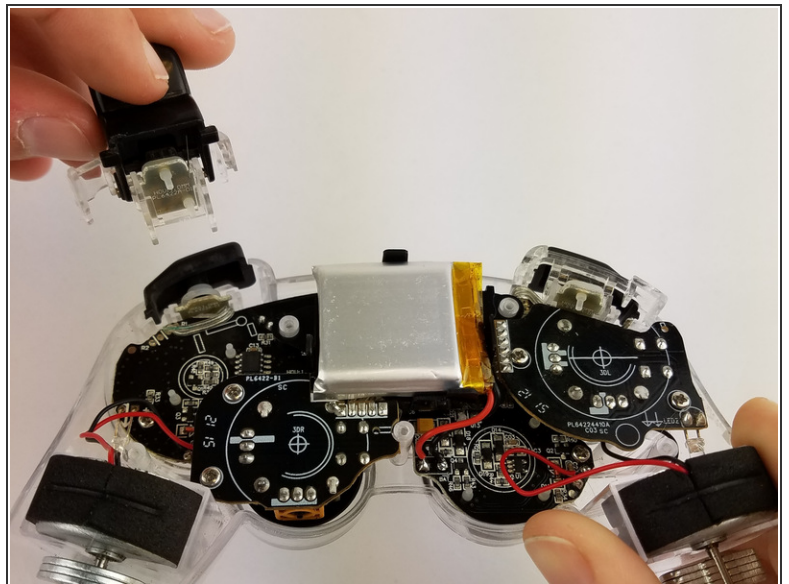
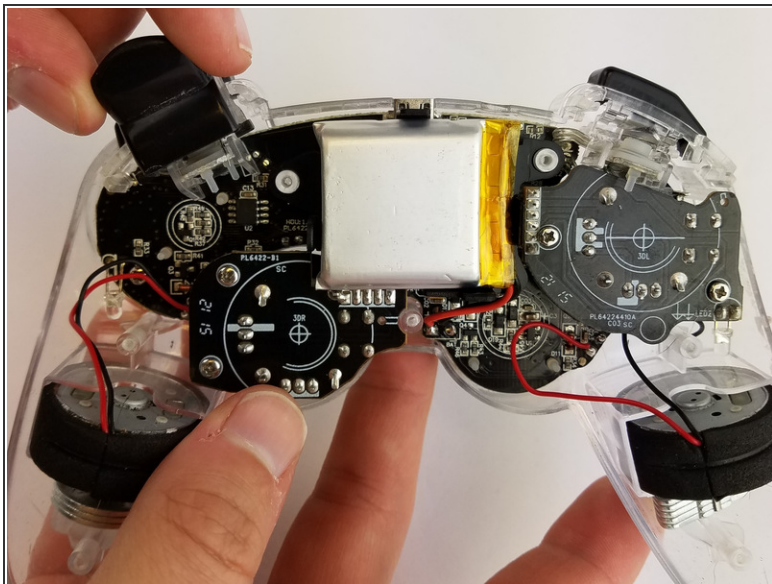
- [Phillips #0 Screwdriver](#) (1)
-

## Step 1 — Back Cover



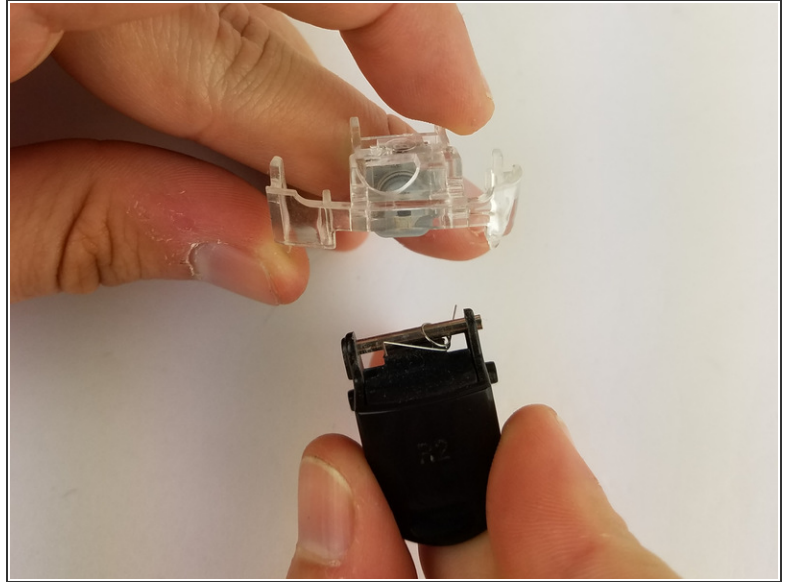
- Lay the controller face down on a flat surface and remove the seven 9mm Phillips #0 screws on the back of the controller.
- Lift up and remove the controller back plate.

## Step 2 — Trigger Button



- With one hand, hold the controller down and with the other pull up on the lower clear plastic trigger housing to remove it.

### Step 3



- Firmly grip the clear plastic trigger housing with one hand and use your other hand pull the black trigger button from its housing.

To reassemble your device, follow these instructions in reverse order.

This document was last generated on 2017-07-01 04:04:53 PM.