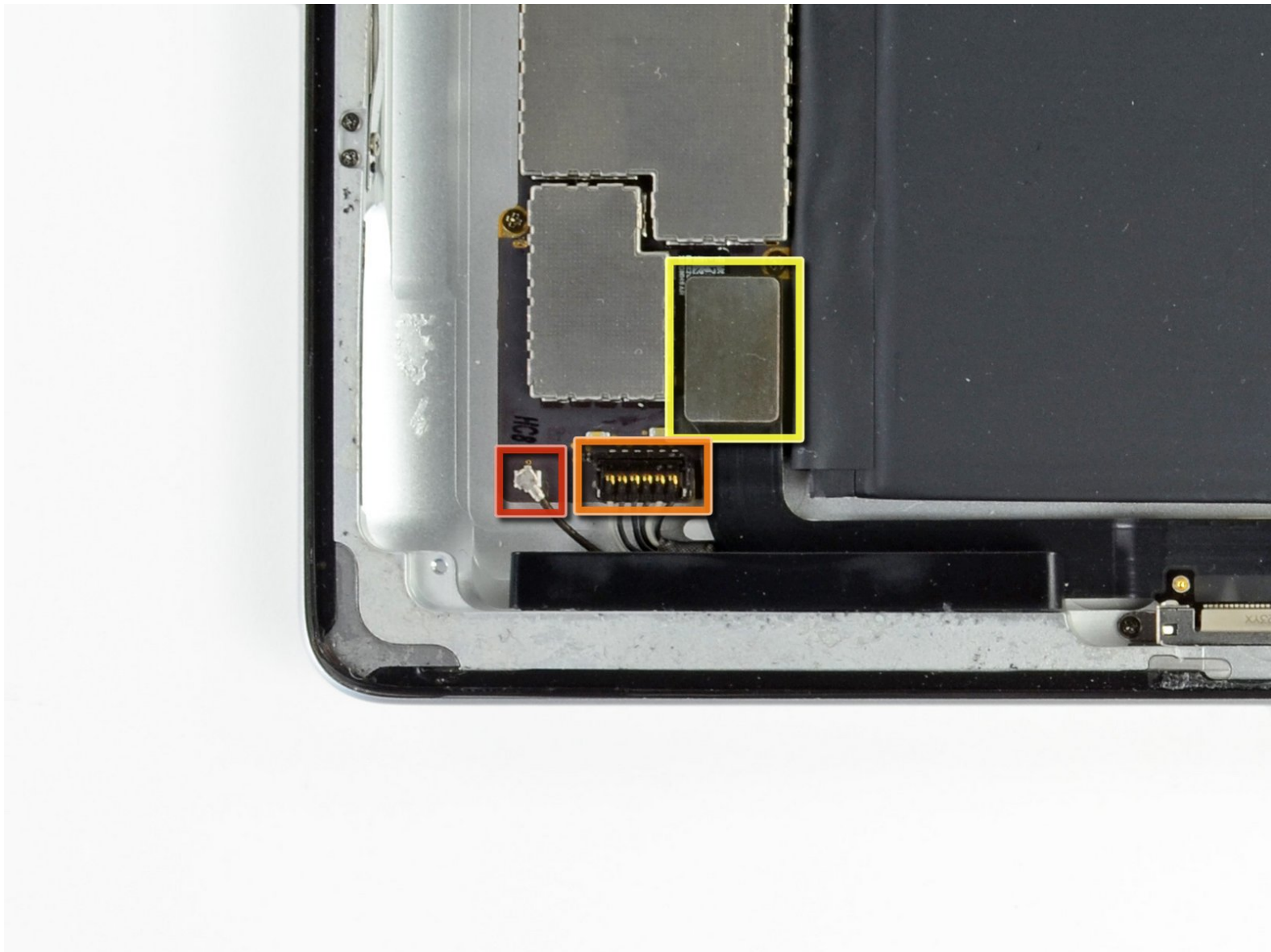




iPad 3 4G Logic Board Connectors Replacement

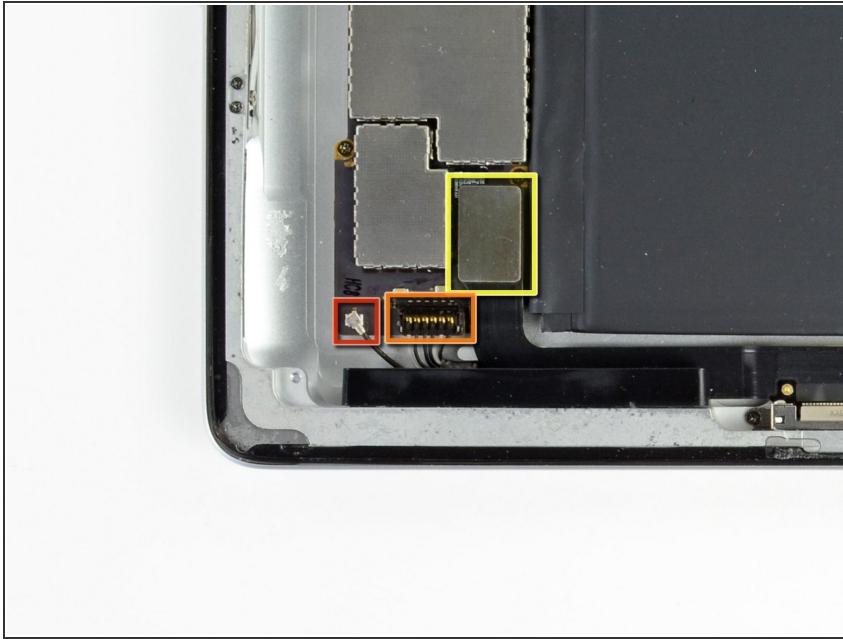
Written By: Walter Galan



INTRODUCTION

Internal prereq.

Step 1 — Logic Board Connectors



- Disconnect the following connectors from their respective sockets on the logic board:
 - Wi-Fi antenna cable
 - Speaker connector cable.
 - Dock connector cable.

⚠ Make sure to pry underneath the connector and not the socket itself. Prying on the socket itself may cause severe damage.

To reassemble your device, follow these instructions in reverse order.

This document was last generated on 2019-09-13 01:04:28 PM.