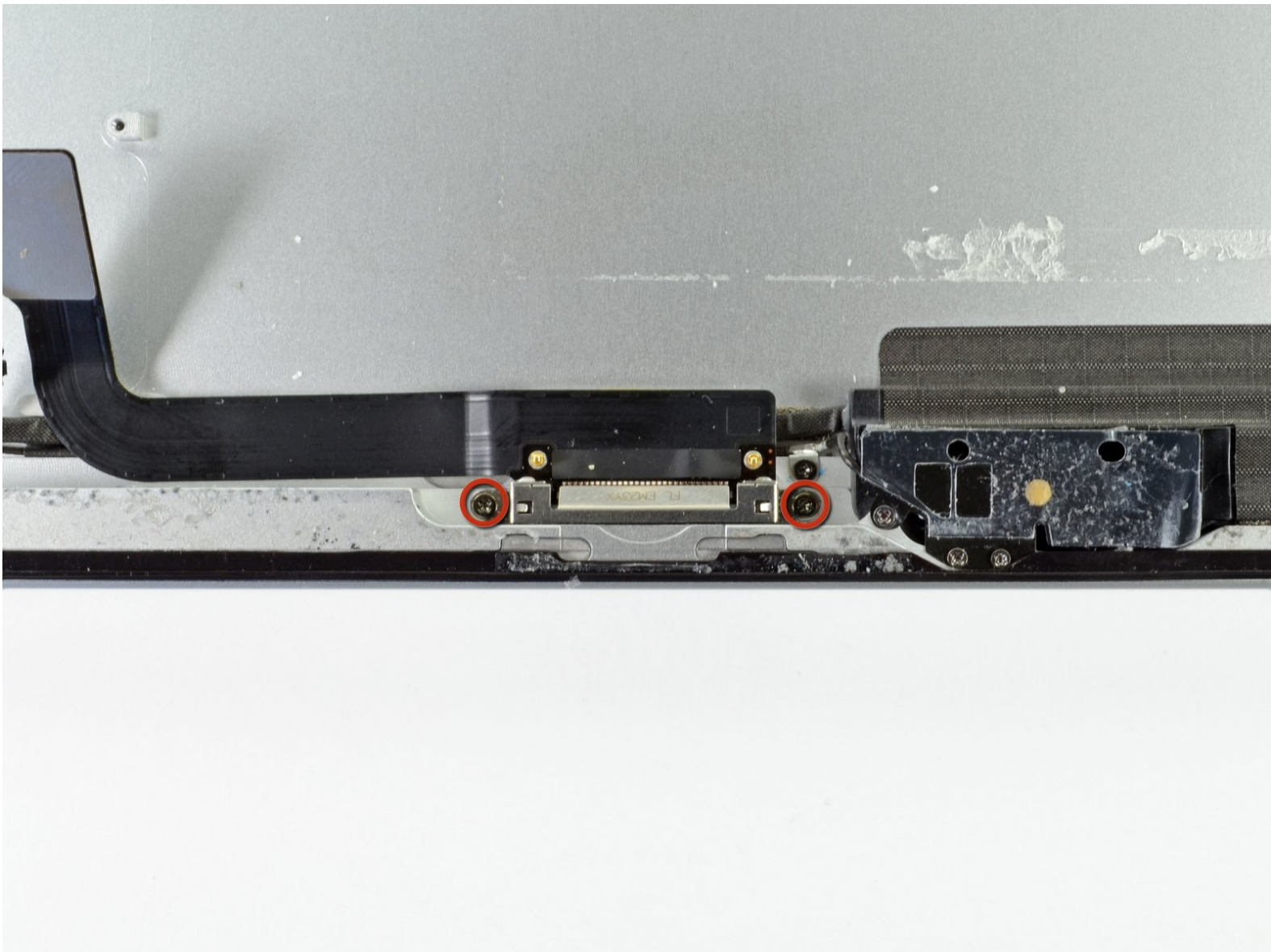




iPad 3 4G Dock Connector Replacement

Internal Prerequisite with battery removed

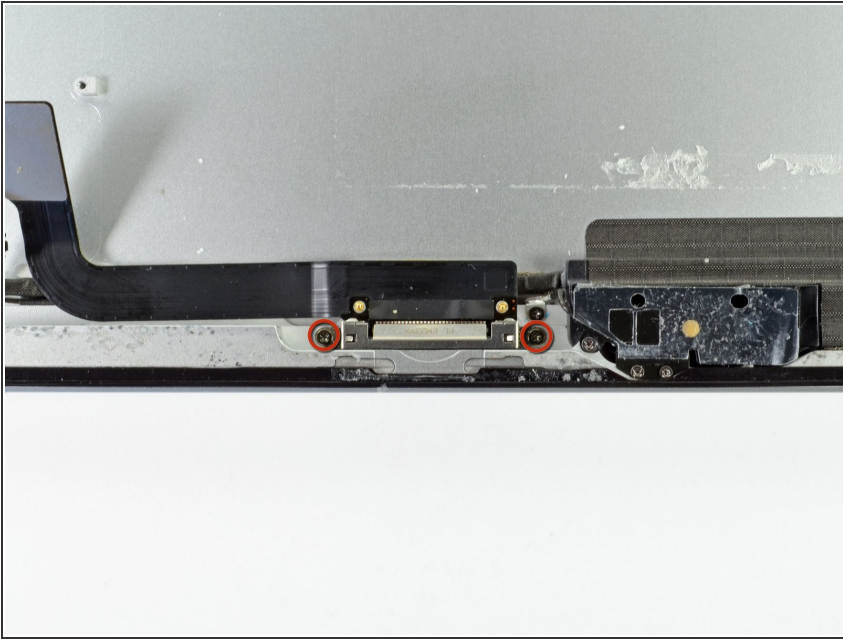
Written By: Brett Hartt



 **TOOLS:**

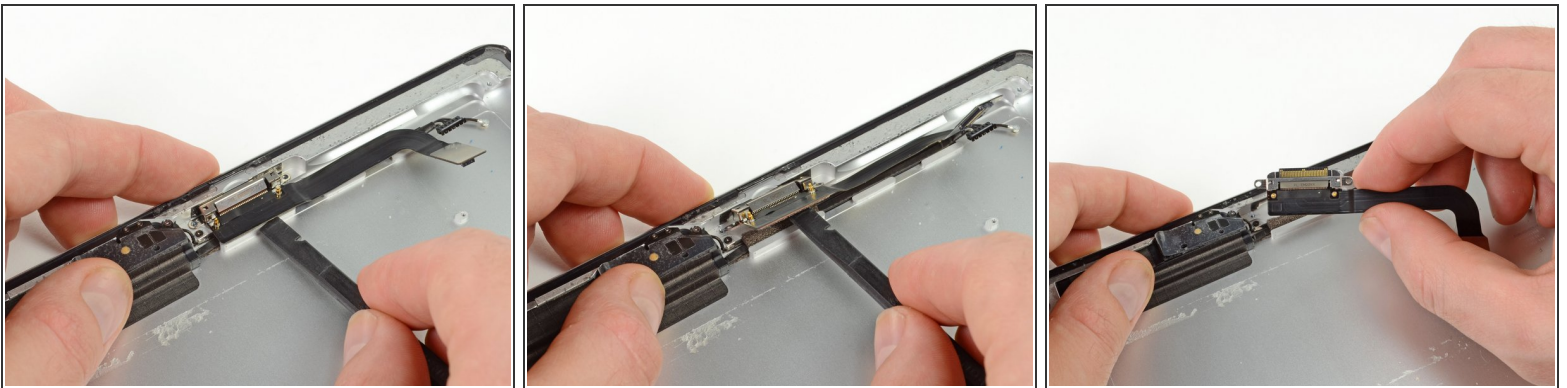
- Phillips #00 Screwdriver (1)
 - Spudger (1)
-

Step 1 — Dock Connector



- Remove the two 1.8 mm Phillips #00 screws securing the dock connector to the rear aluminum case.

Step 2



- Using the flat end of a spudger, lift up the dock connector.
- Remove the dock connector from the iPad.

To reassemble your device, follow these instructions in reverse order.