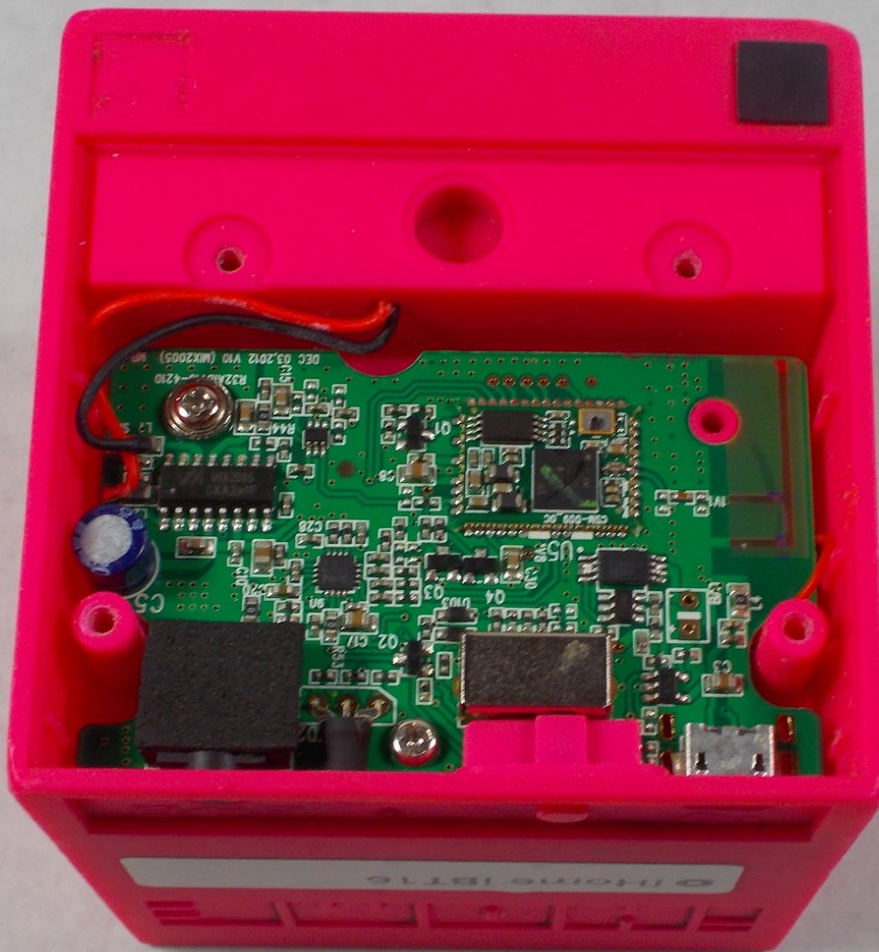




iHome iBT16 Motherboard Replacement

This guide will assist you in removing and replacing the main circuit board in the iBT16.

Written By: Joseph Hazel



INTRODUCTION

This guide will assist you in removing and replacing the main circuit board in the iBT16. This component houses all of the functional pieces of the device, and problems may arise if individual insignificant components or electrical connections between components on the board fail. Replacing the motherboard is often more practical than doing an in depth diagnosis and replacing the problem component.

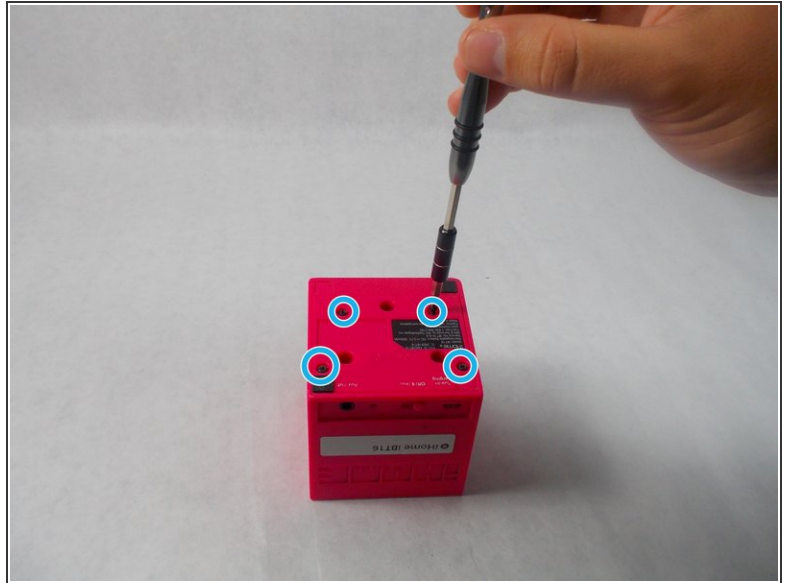
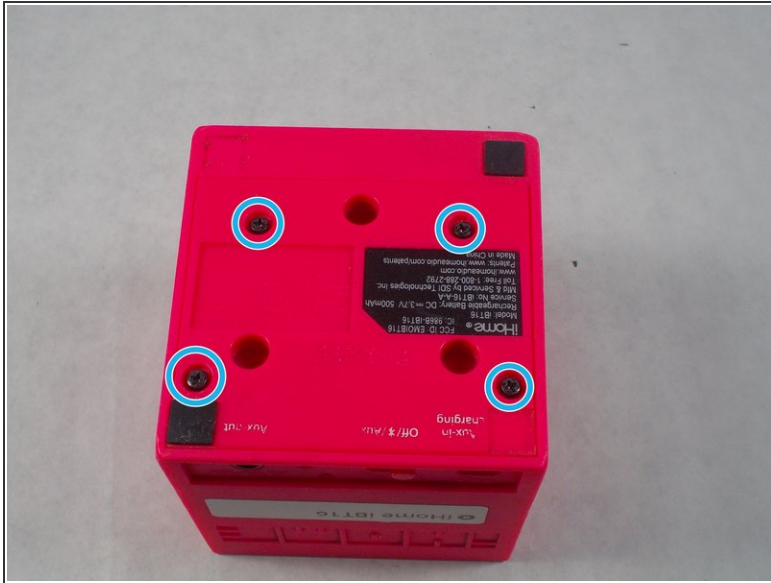
TOOLS:

- [Phillips #00 Screwdriver](#) (1)
- [Soldering Iron](#) (1)
- [Desoldering Braid](#) (1)
- [iFixit Opening Tools](#) (1)
- [Anti-Static Wrist Strap](#) (1)

PARTS:

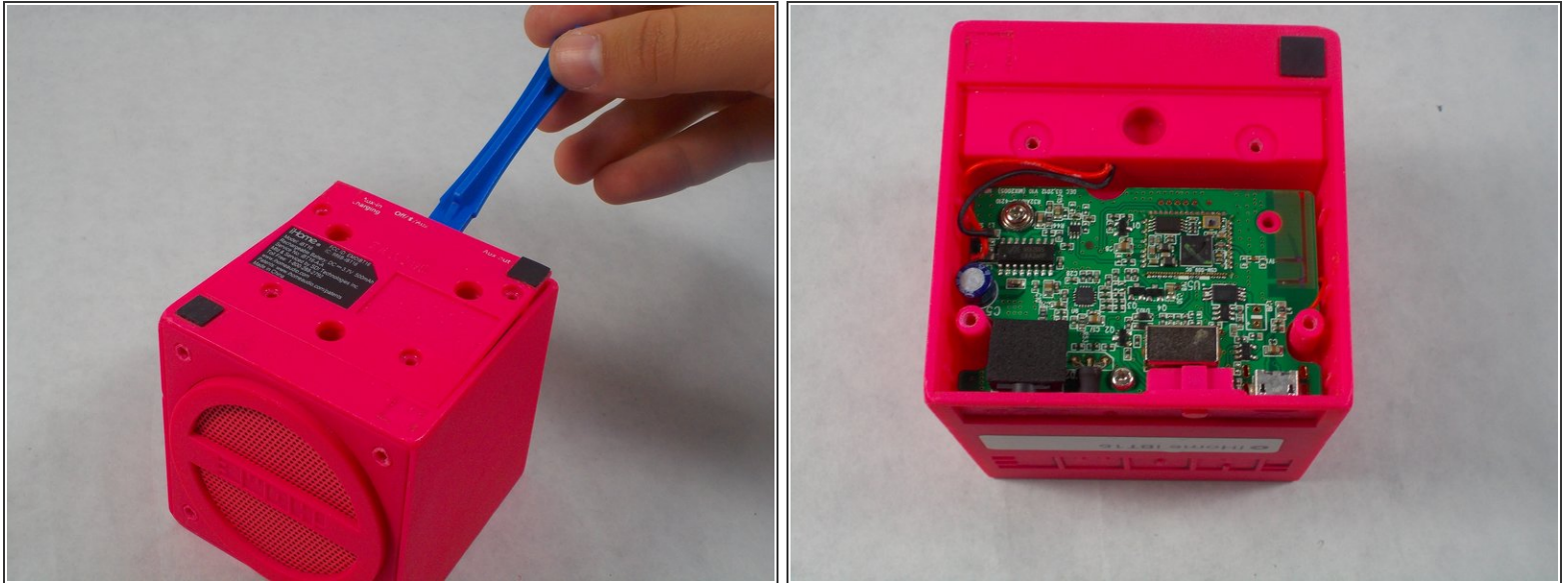
- [Replacement iBT16 Motherboard](#) (1)

Step 1 — Base Plate



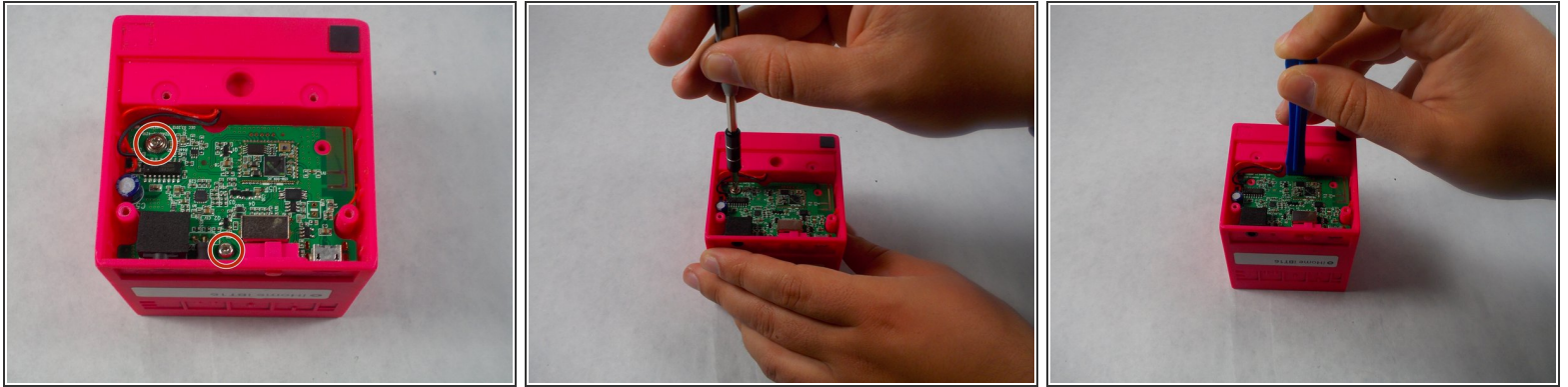
- i Make sure to flip the device over to get into the correct orientation
- Using the Philips #00 Screwdriver, unscrew and remove the four 9mm black screws on the base plate of the device.
- ☞ Make sure to keep these screws in a safe location so you don't lose them

Step 2



- Using the plastic opening tool, insert into the crack between the base plate and the main body of the device
- Using a lever like motion, push the opening tool down thus lifting the plate
- ⓘ You will need to use your fingers to lift the base plate off the main body of the device
- The motherboard is directly underneath the base plate

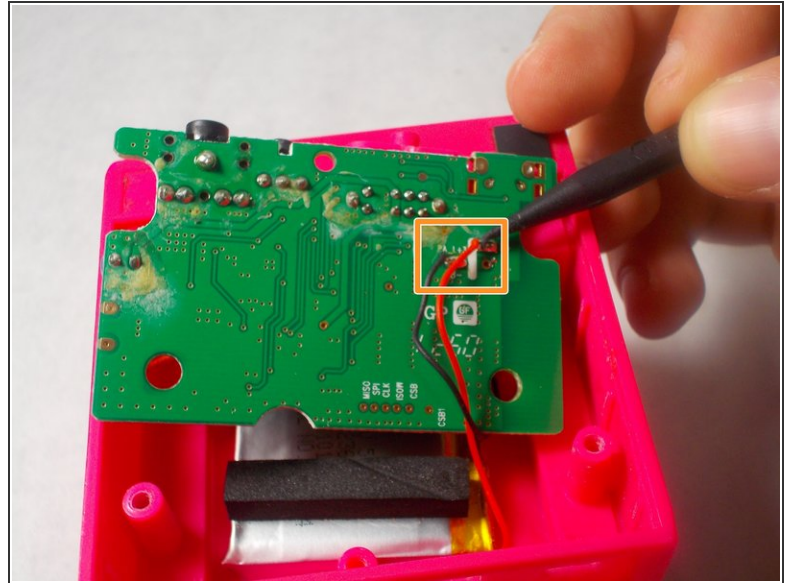
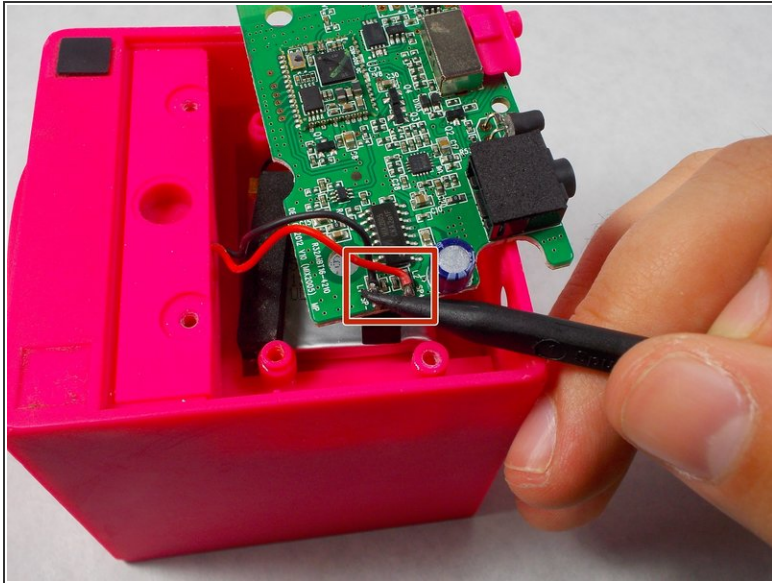
Step 3 — Motherboard



 Connect the ground strap to earth ground and put it around your wrist.

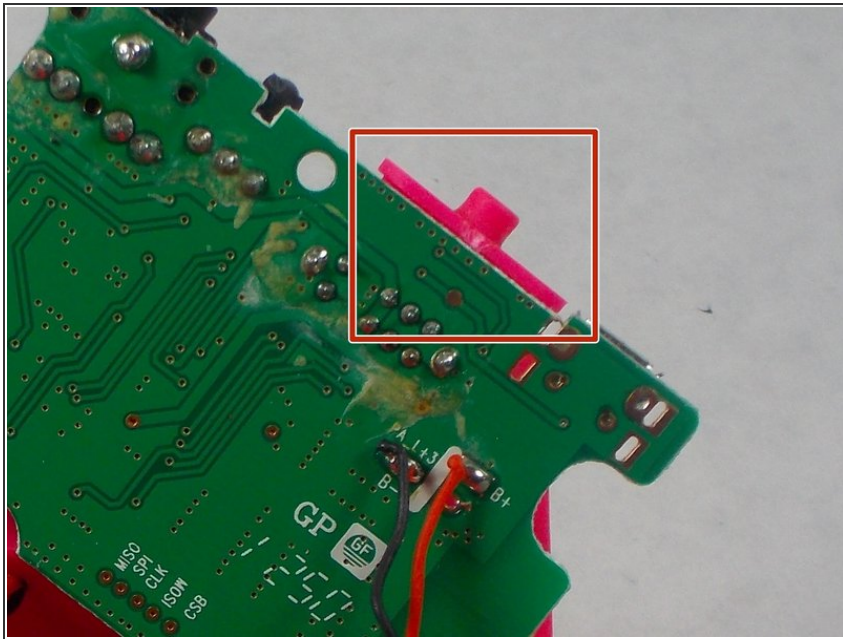
- Unscrew the two 10mm silver phillips screws holding the motherboard in place on the inside of the device.
- Use the plastic opening tool to pry the motherboard out of the device housing.

Step 4



- i** If you are unfamiliar with soldering and unsoldering components, see the [Soldering Skills Guide](#).
- Unsolder the red and black wires connecting the speaker to the motherboard.
 - Flip the motherboard over.
 - Unsolder the red and black wires connecting the battery to the motherboard.
- ⚠** When reassembling your device, be sure to connect the speaker and battery with correct polarity.

Step 5



- Remove the plastic cover from the power switch actuator on the motherboard.

To reassemble your device, follow these instructions in reverse order.