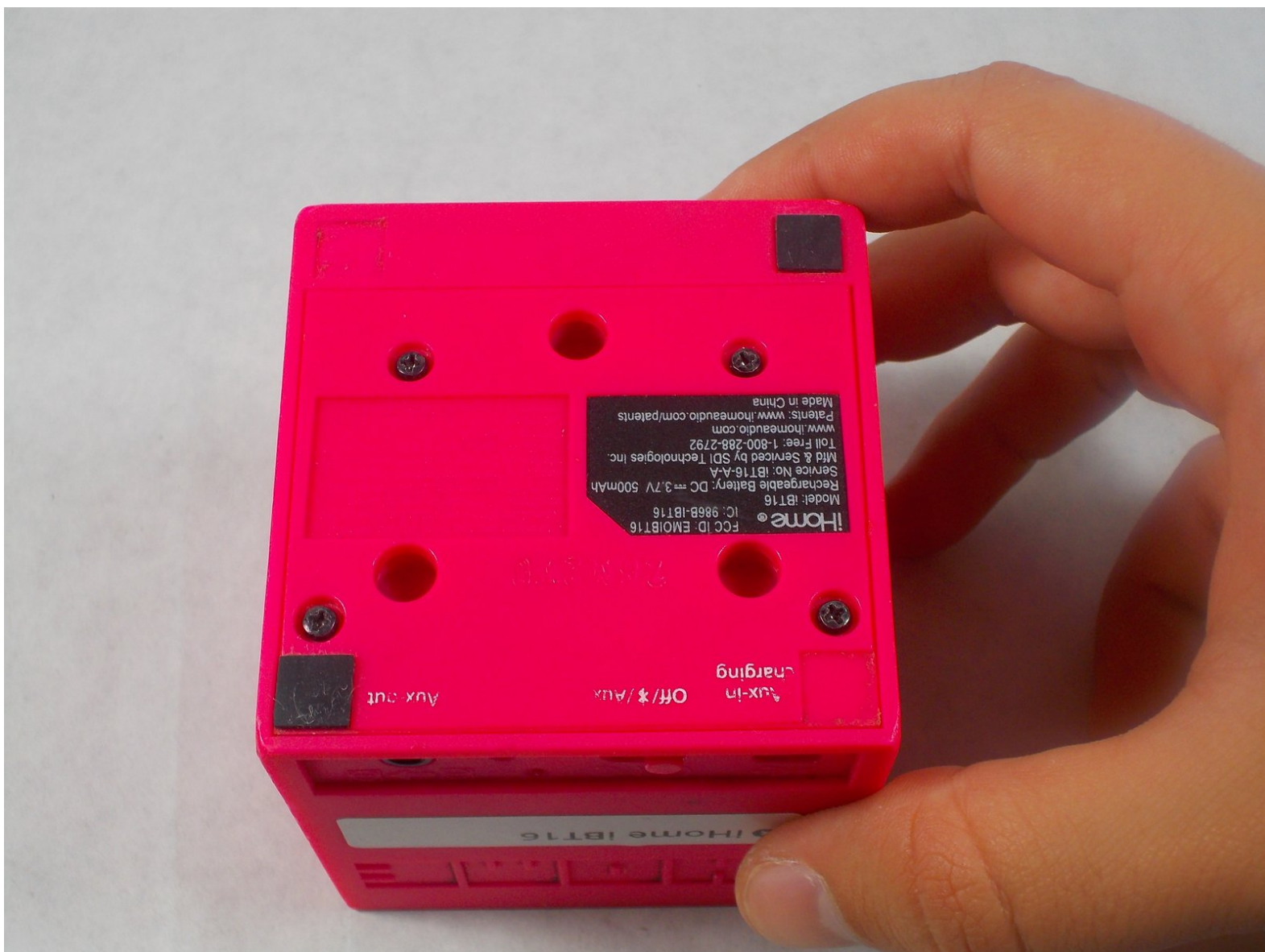




iHome iBT16 Base Plate Replacement

This is a guide about removing and replacing the base panel on the iHome iBT16

Written By: Ryan Edwards



INTRODUCTION

In this guide, the reader will be stepped through the process of removing and replacing the base panel on the iHome iBT16. This is a prerequisite guide to most replacement guides, due to it being the access to the motherboard.



TOOLS:

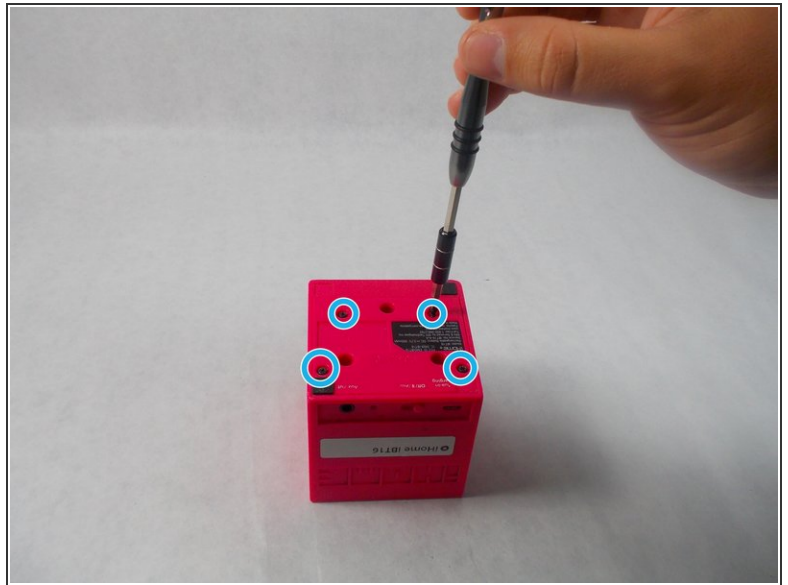
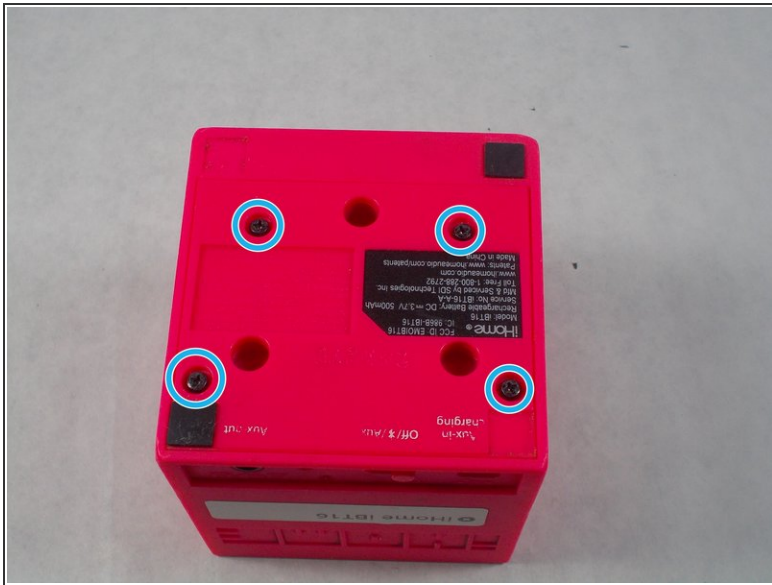
- [Phillips #00 Screwdriver](#) (1)
- [iFixit Opening Tools](#) (1)



PARTS:

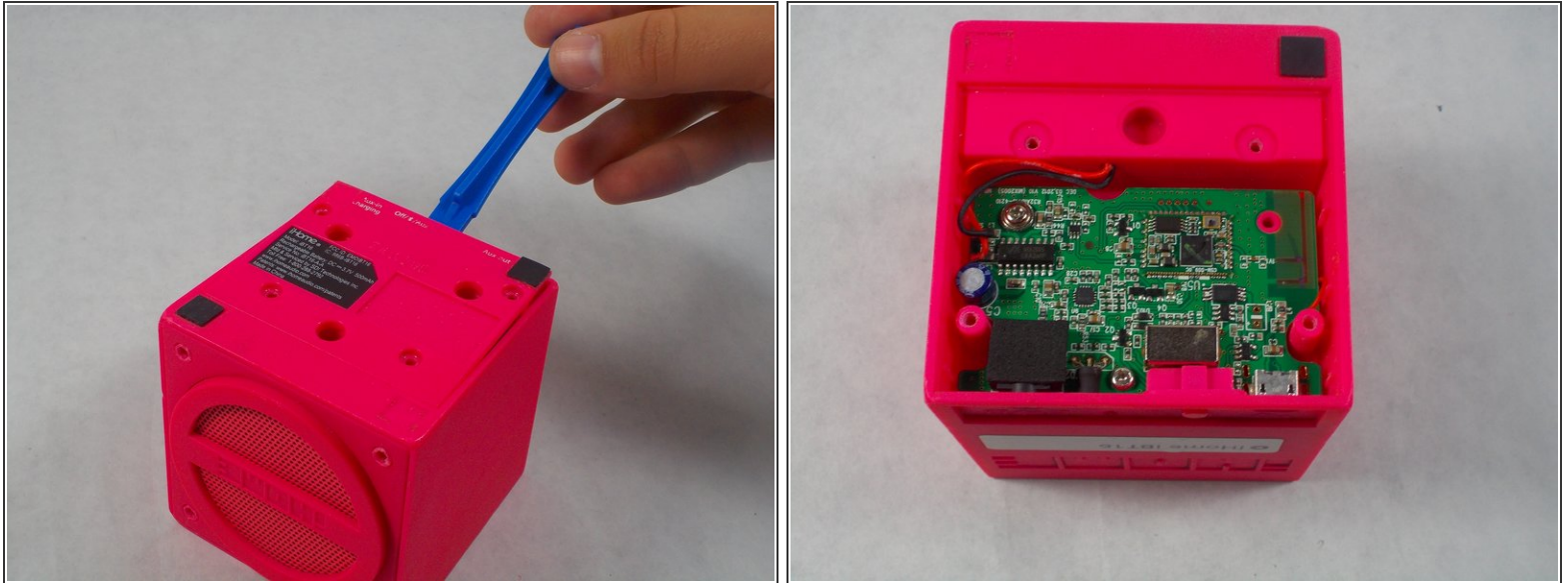
- [iHome iBT16 Base Plate](#) (1)

Step 1 — Base Plate



- i Make sure to flip the device over to get into the correct orientation
- Using the Philips #00 Screwdriver, unscrew and remove the four 9mm black screws on the base plate of the device.
- 📌 Make sure to keep these screws in a safe location so you don't lose them

Step 2



- Using the plastic opening tool, insert into the crack between the base plate and the main body of the device
- Using a lever like motion, push the opening tool down thus lifting the plate
- ⓘ You will need to use your fingers to lift the base plate off the main body of the device
- ➡ The motherboard is directly underneath the base plate

To reassemble your device, follow these instructions in reverse order.