



# LG EnV VX9900 Circuit Board and Full Key Board Replacement

This guide is for installing both the circuit board and the full key board of the LG EnV VX9900, as they are attached as one unit.

Written By: Stephanie Villavicencio



---

## INTRODUCTION

The circuit board and full key board are attached and must be installed together as one unit. Do not try to separate them.

---

### TOOLS:

- [Phillips #00 Screwdriver](#) (1)
  - [Push Pin](#) (1)
  - [iFixit Opening Tools](#) (1)
-

## Step 1 — Battery



- Place the phone so the screen side is facing down.
- Locate the latch at the end of the phone, opposite of the camera.

## Step 2



- Push/pull the latch away from the camera, causing the battery to pop out.

### Step 3



- Remove the battery.

### Step 4 — Circuit Board and Full Key Board



- Remove the 5 screw covers on the back of the phone using a Push Pin.

## Step 5



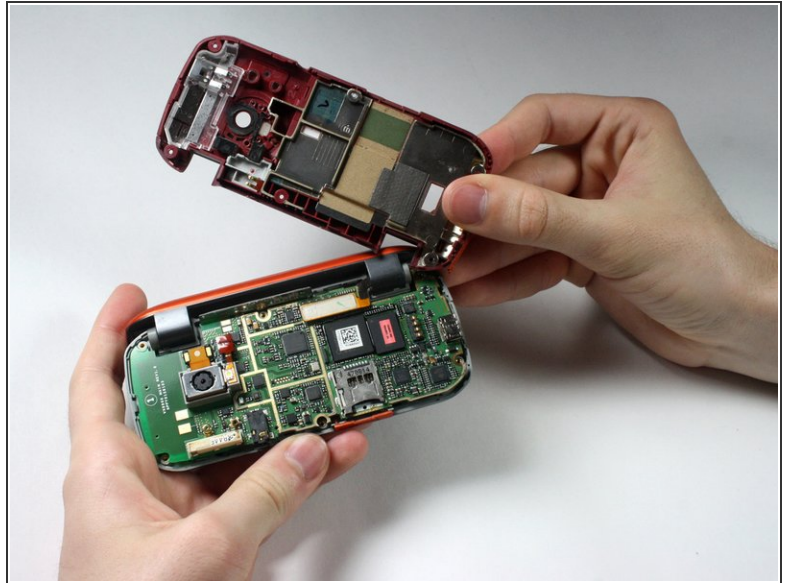
- With a Phillips #00 Screwdriver, remove the five 3.44 mm screws that were under the screw covers.
- Also with a Phillips #00 Screwdriver, remove the screw that was revealed once the battery was removed.

## Step 6



- Open the phone.

## Step 7



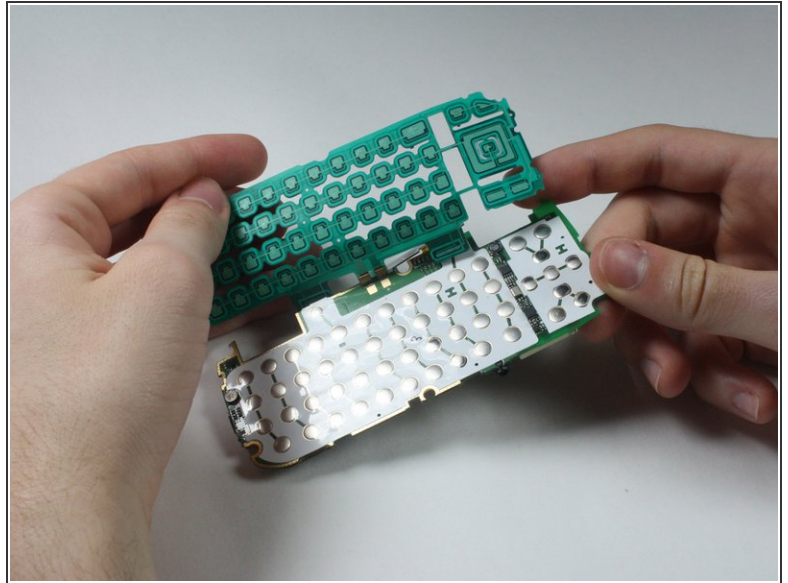
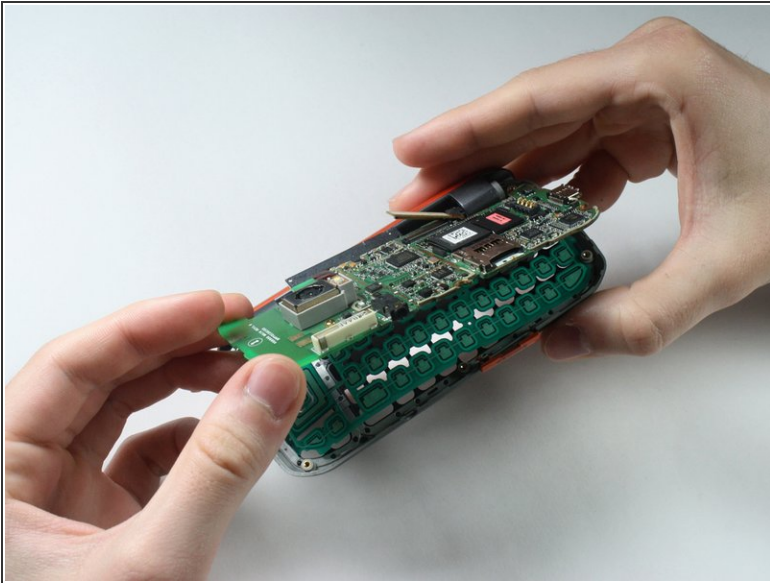
- Starting at the card slot or charger port for greater ease, pry off the colored casing from the back of the phone using the Plastic Pry Tool (or a finger nail may work).
- ⓘ Prying open the part just to the left of the right hinge can be difficult.
- Remove the back colored casing and set it to the side.

## Step 8



- Gently pry and detach the connection located near the hinge with fingers.

## Step 9



- ⓘ The circuit board and the key board will be attached, as shown in the second picture.
- Lift them both out from the rest of the phone.
- ⚠ Do not try to the detach key board pad from the circuit board. They are replaced as a unit.

To reassemble your device, follow these instructions in reverse order.

This document was last generated on 2019-07-17 03:27:36 AM.