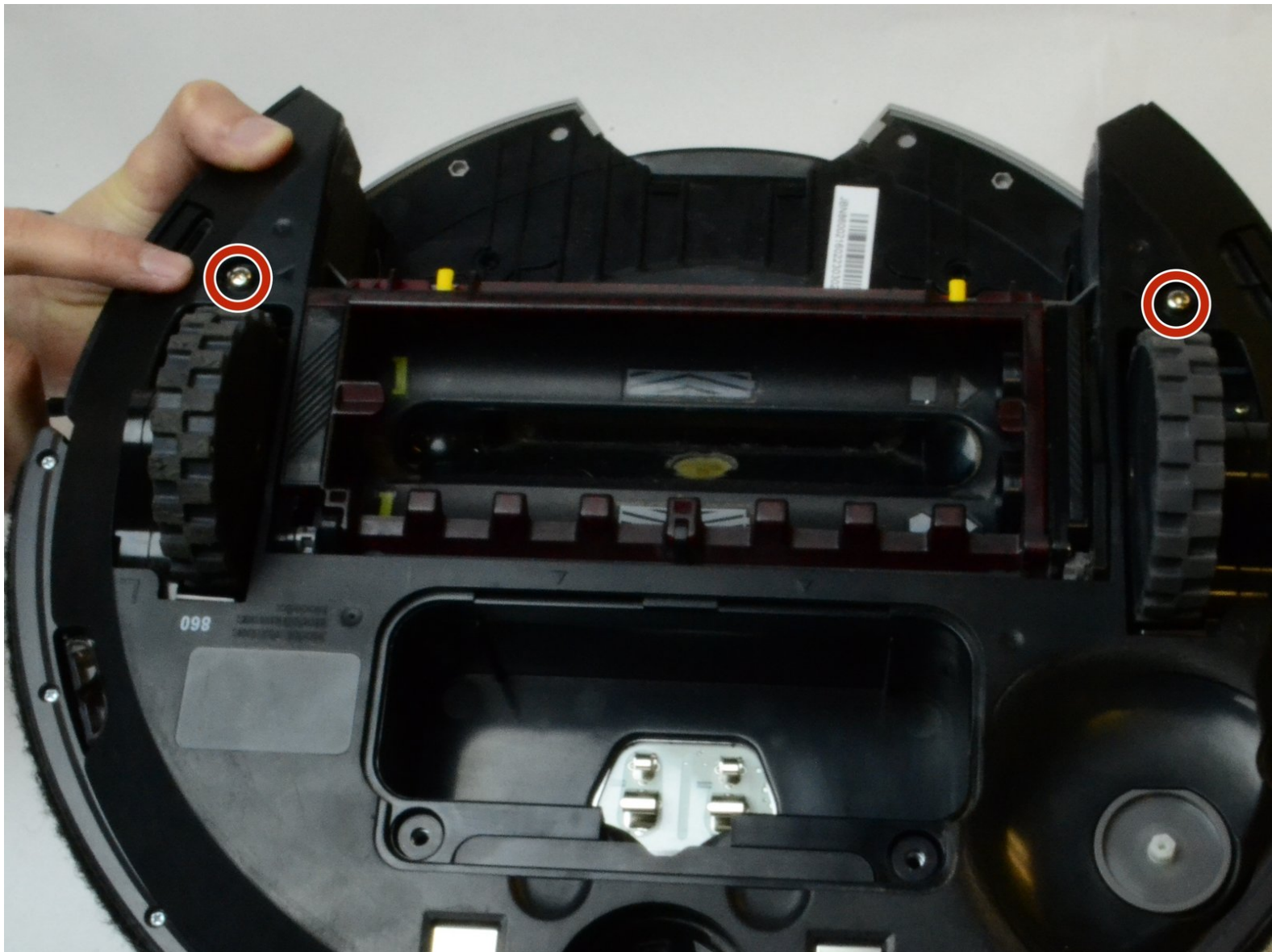




# iRobot Roomba 860 Side Wheel Assembly Replacement

This guide provides instructions to remove the side wheel assembly if the iRobot Roomba 860 is unable to move or the wheels no longer spin

Written By: Ryan Murphy



This document was generated on 2019-09-18 06:55:03 AM (MST).

 **TOOLS:**

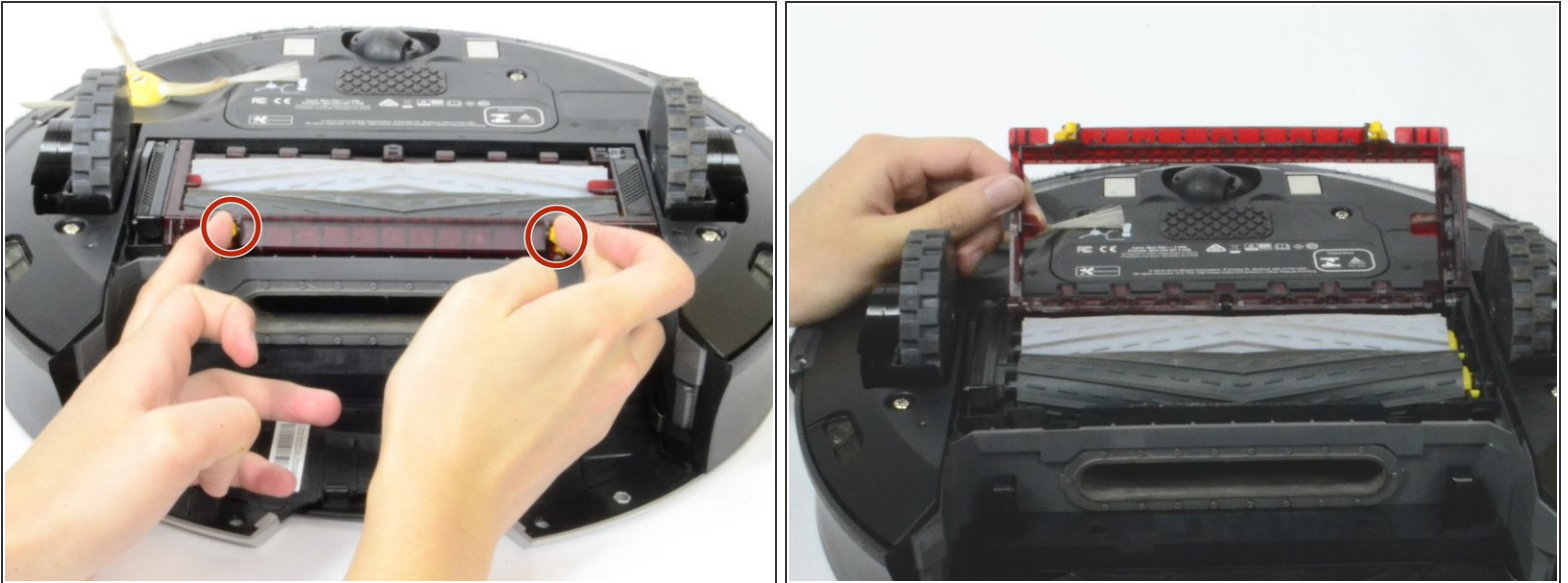
- Phillips #0 Screwdriver (1)
  - Phillips #2 Screwdriver (1)
-

## Step 1 — Debris Extractors



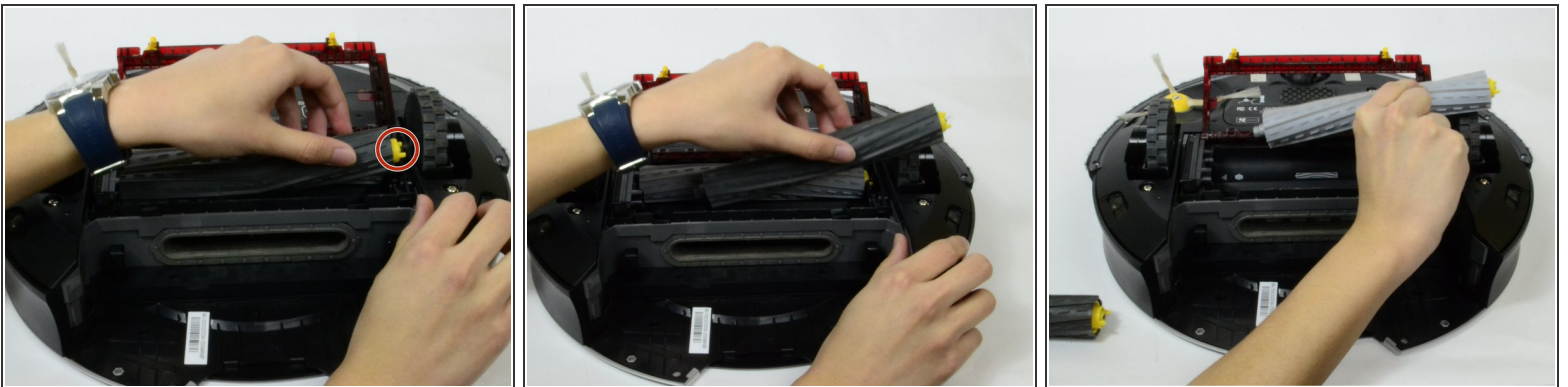
- To remove the debris extractor, first begin by removing and emptying the trash bin.
- Push down and pull out on the silver button located on the top of the Roomba in the back.
- The trash bin should then slide out.

## Step 2



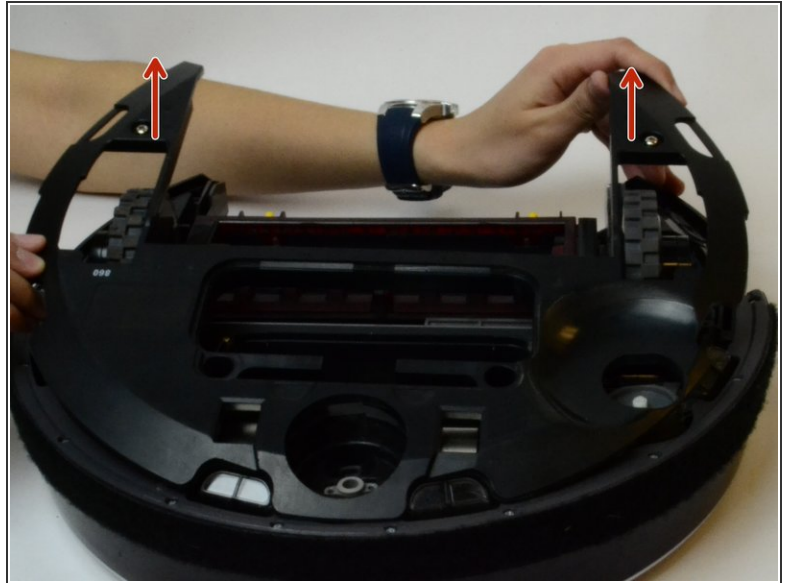
- With the Roomba upside down, locate the two yellow buttons by the extractor.
- To open the flap holding the extractors in place, pinch the two yellow buttons together towards the center and pull up on the flap at the same time

## Step 3



- Once the flap is open, grab the yellow end of the dark gray extractor and pull up slightly.
- After lifting it up about an inch, pull it out towards one of the side wheels.
- The extractor should slide out with ease. Repeat the same procedure for the light gray debris extractor.

## Step 4 — Side Wheel Assembly



- To remove the Side Wheel Assembly, start by locating 2 15mm Phillips #2 Point screws above the wheels.
- Remove the screws and pull up on the plate surrounding the side wheels.

## Step 5



- Locate and remove 3x Phillips #0 Point Screws located behind the yellow side brush, bottom left corner of heel assembly, and on the outside of the wheel assembly.

## Step 6



- With all the screws removed, lift up on the side wheel assembly to remove it from the Roomba housing.
- The other wheel can be removed and replaced the same way

To reassemble your device, follow these instructions in reverse order.