



iMac Intel 17" Access Door Replacement

Written By: Andrew Bookholt



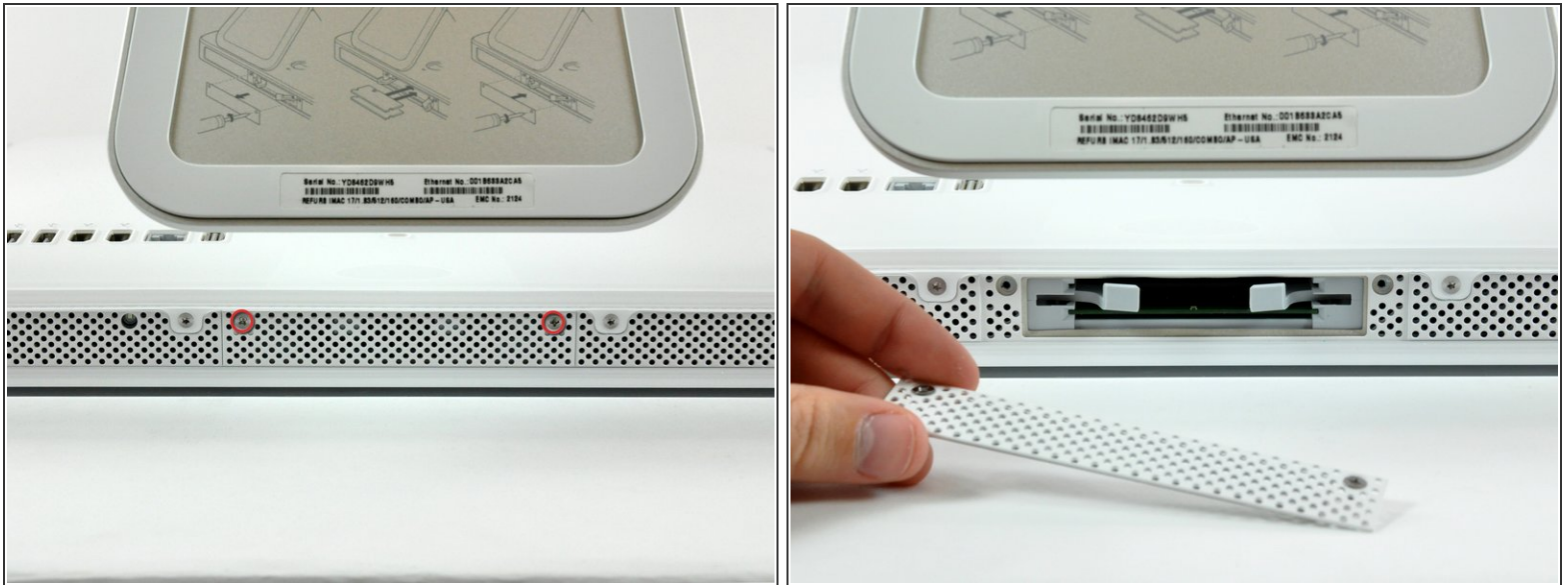
INTRODUCTION

Remove the access door to replace RAM chips and remove your front bezel.

TOOLS:

- [Phillips #1 Screwdriver](#) (1)
-

Step 1 — Access Door



- Loosen the two captive Phillips screws securing the access door to the iMac.
- Remove the access door from the iMac.

⚠ Before beginning the repair, unplug the computer and press and hold the power switch for 20-30 seconds, to discharge internal capacitors.

To reassemble your device, follow these instructions in reverse order.

This document was last generated on 2019-07-11 12:07:10 PM.