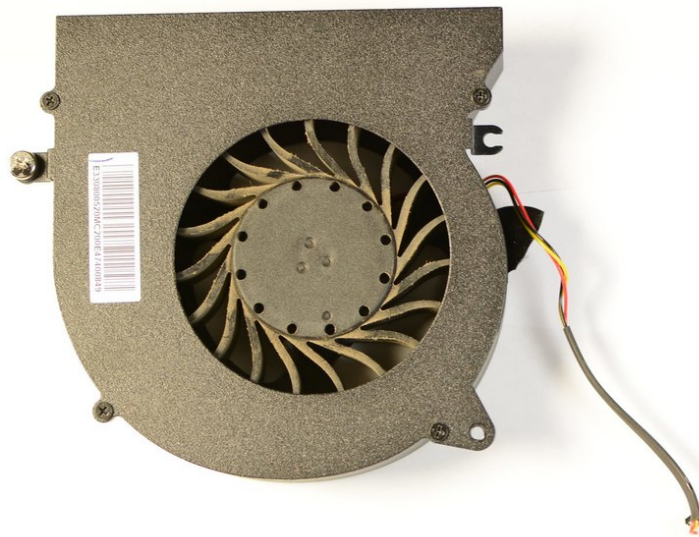




MSI GT72 2QE Dominator Pro Fans Replacement

Guide to remove both fans from the bottom of the MSI GT72 2QE Dominator Pro.

Written By: Michael Petralia



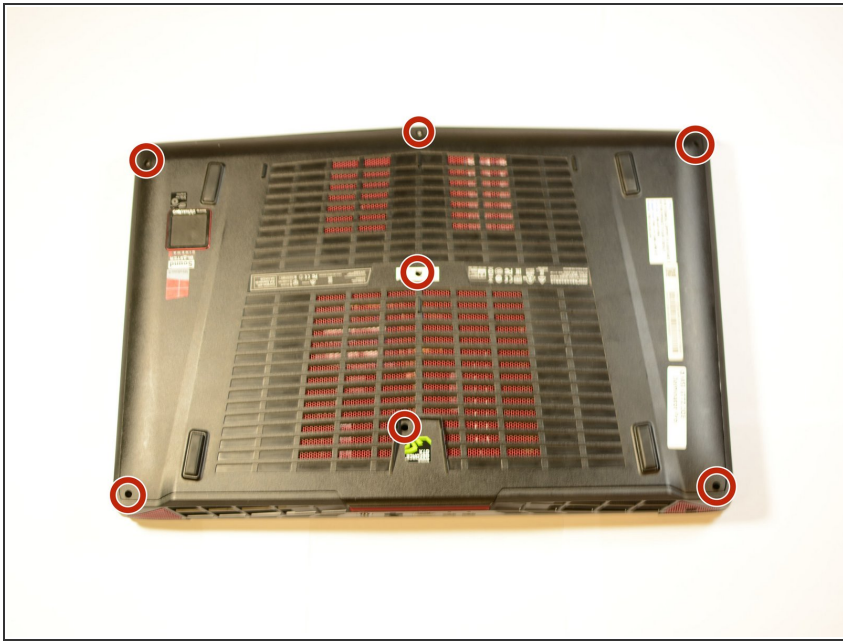
INTRODUCTION

If you experience any issues with fans not working properly or not functioning at all, this guide will help you remove them from the computer for inspection or replacement.

TOOLS:

- [Phillips #0 Screwdriver](#) (1)
-

Step 1 — Fans



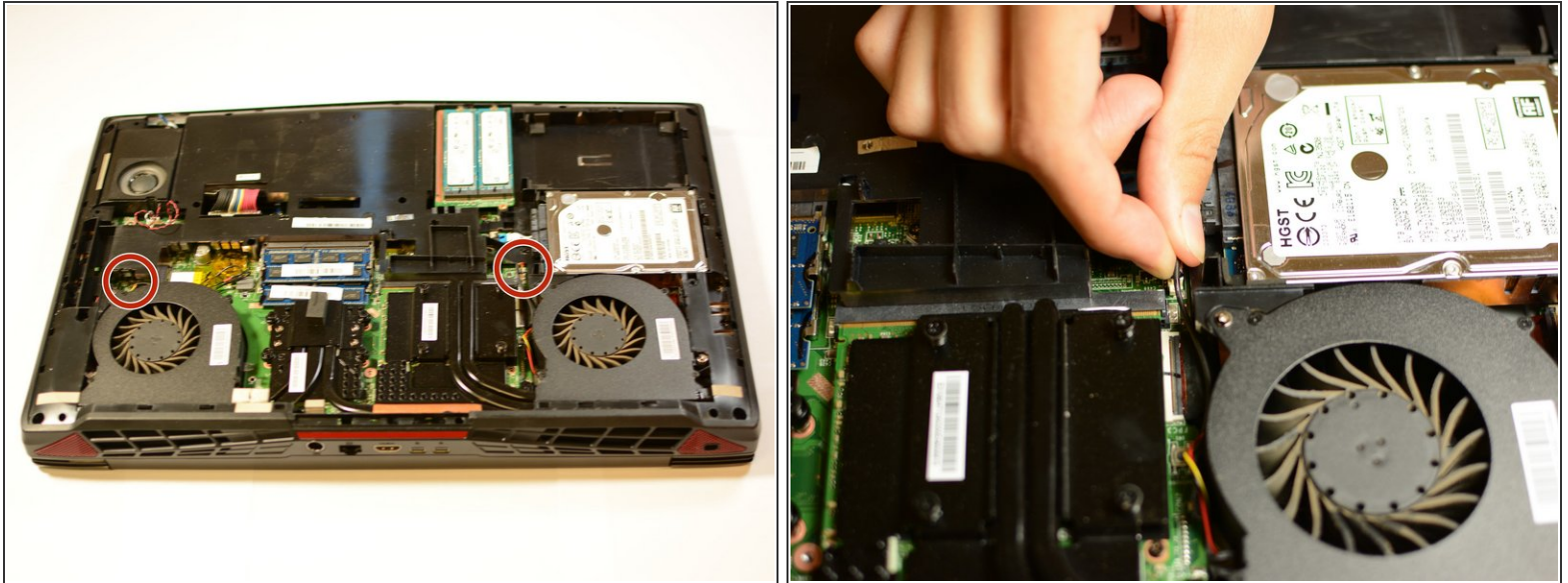
- Remove the seven 6 mm Phillips #00 screws on the back cover of the laptop with the PH0 Bit screwdriver.
- ⓘ Every screw in this guide can be removed with the same PH0 Bit screwdriver.

Step 2



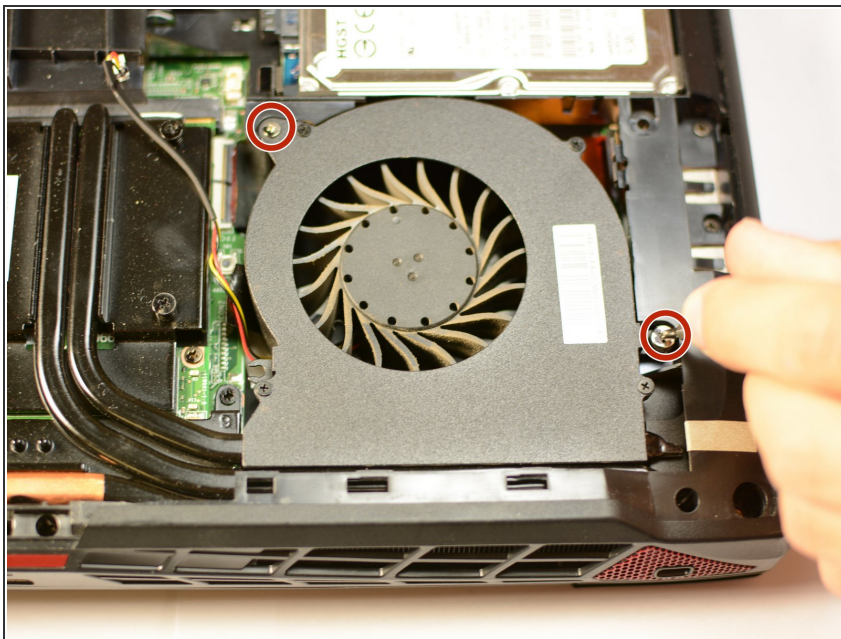
- Lift the back cover off by lifting by the tab on the bottom of the cover as indicated.

Step 3



- Detach the two indicated wires by pulling upward on them.

Step 4



- Unscrew a total of four 10mm Philips #00 screws (two screws per fan) as indicated.

To reassemble your device, follow these instructions in reverse order.