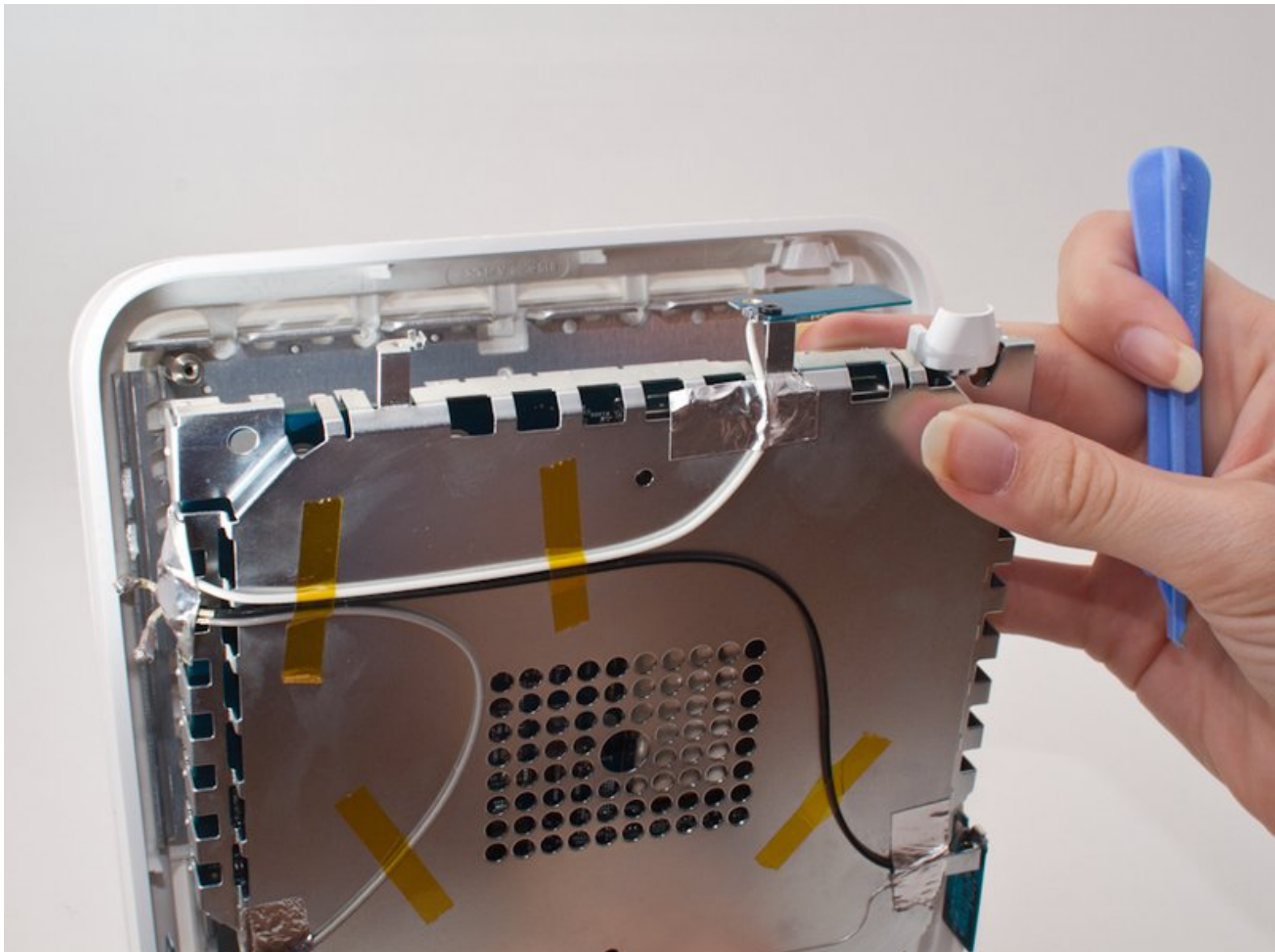




# Apple AirPort Extreme Model A1354 Outer Case Replacement

This guide shows how to best disassemble the AirPort Extreme's outer case.

Written By: Brandon



---

## INTRODUCTION

This will show how to take apart the outer case of the device so repairs can be made.

---

### TOOLS:

- [Phillips #00 Screwdriver](#) (1)
  - [iFixit Opening Tools](#) (1)
-

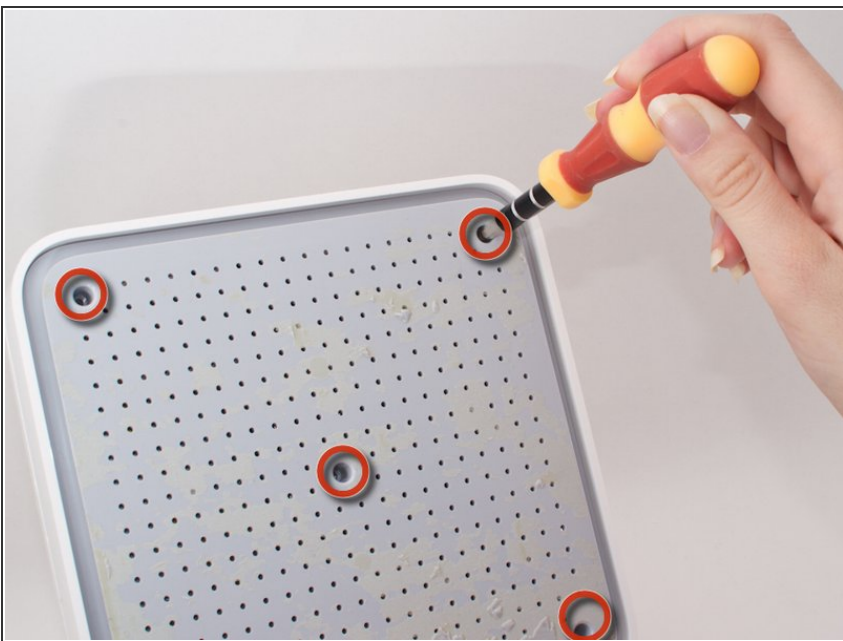
## Step 1 — Outer Case



- First start by peeling off the outer rubbery covering on the bottom of the device.

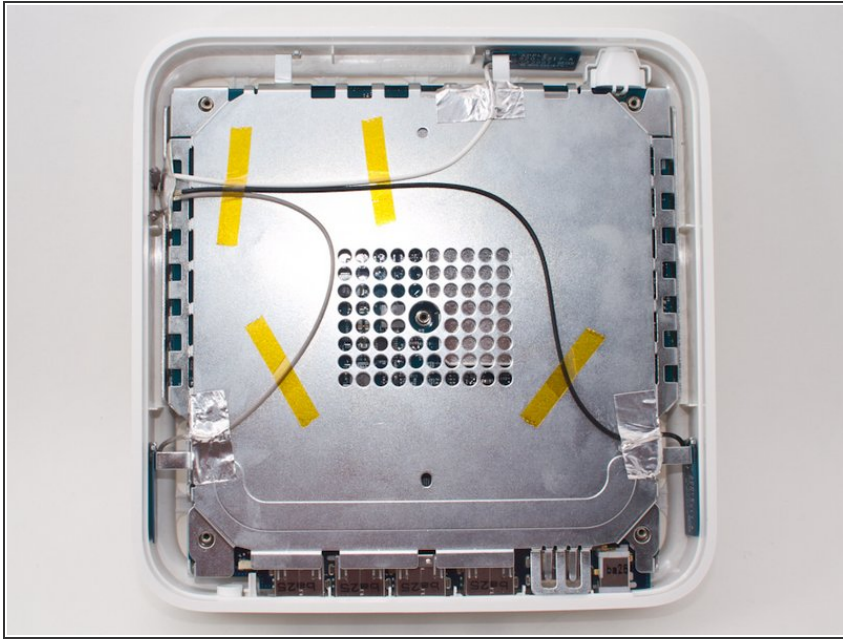
**⚠ CAUTION:** This part is very fragile, so it is recommended that a blow dryer is used on the covering to heat it up. Simply blow dry the covering while slowly peeling it away, and the covering will not tear.

## Step 2



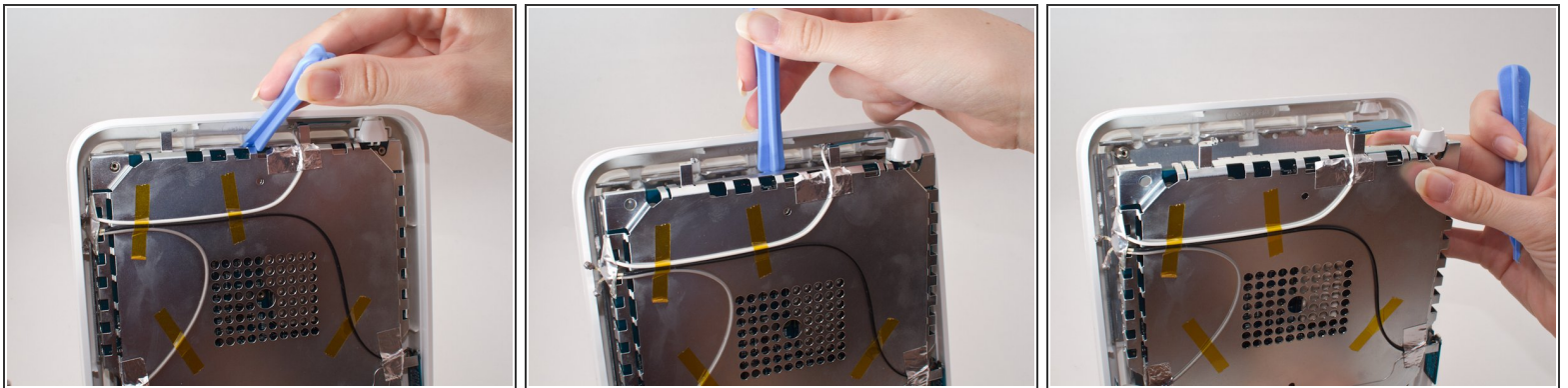
- After removing the rubber covering, unscrew the five 4.9mm Phillips screws in the holes of the plastic casing.

### Step 3



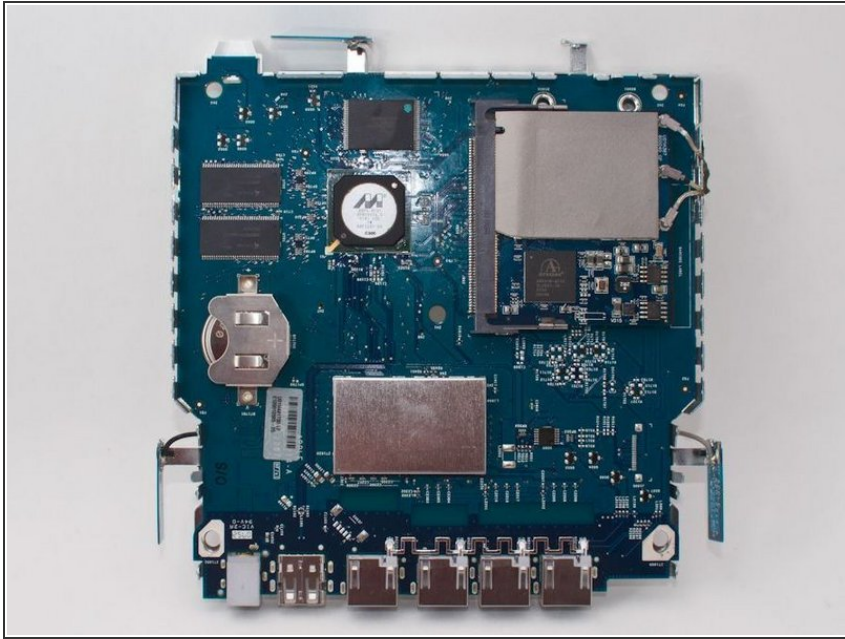
- After unscrewing all five screws, remove the plastic casing. The back should now look like the picture shown.

### Step 4



- The inner metal casing is latched inside the outer white plastic shell, so insert a pry tool underneath the metal casing and pry it apart from the shell.
- It should make a click when it comes apart.

## Step 5



- Remove the outer casing.
- The exposed logic board should look like this.

To reassemble your device, follow these instructions in reverse order.