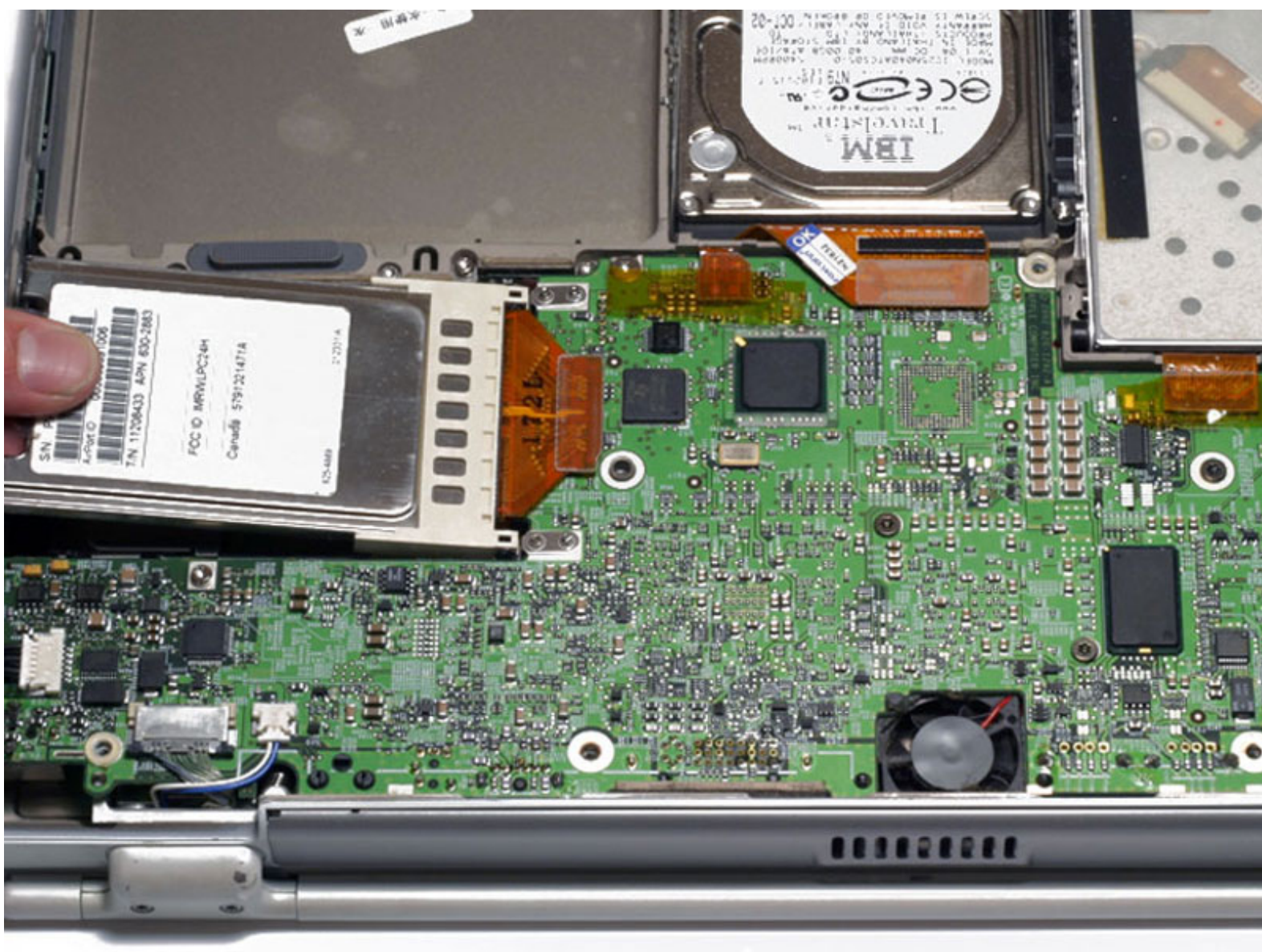




PowerBook G4 Titanium DVI Airport Card Replacement

Written By: iRobot



INTRODUCTION

Install an original Airport 802.11b card internally.

TOOLS:

- [T8 Torx Screwdriver](#) (1)

PARTS:

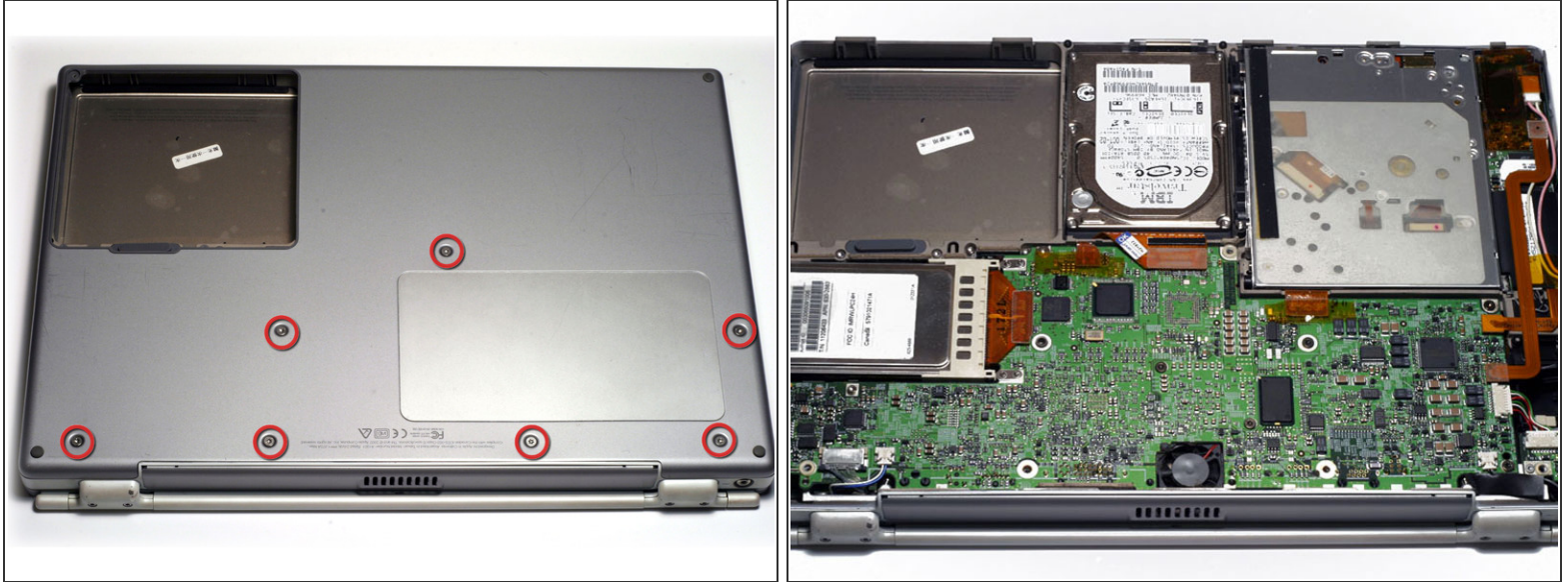
- [Airport Card](#) (1)
-

Step 1 — Battery



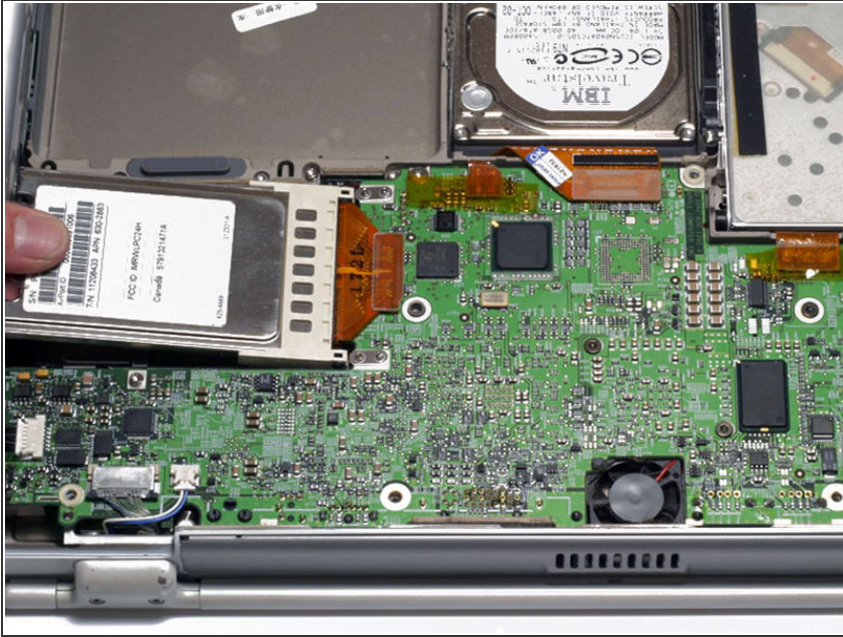
- Locate the battery release tab on the underside of the G4.
- Slide the battery release tab to the left and lift the battery out of the computer.

Step 2 — Lower Case



- Remove the seven T8 Torx screws from the lower case.
- Using your thumbs, slide the lower case toward the front of the computer.
- The lower case may stick in the front on a tab just above the center of the optical drive. Be careful as you work the case off, or you may break the thin strip of plastic just above the drive.
- Lift the lower case off.

Step 3 — Airport Card



- Firmly grasp the plastic tab attached to the Airport card and pull up and to the left.
- Disconnect the antenna cable from the left side of the Airport card.

To reassemble your device, follow these instructions in reverse order.

This document was last generated on 2017-06-21 09:41:49 AM.