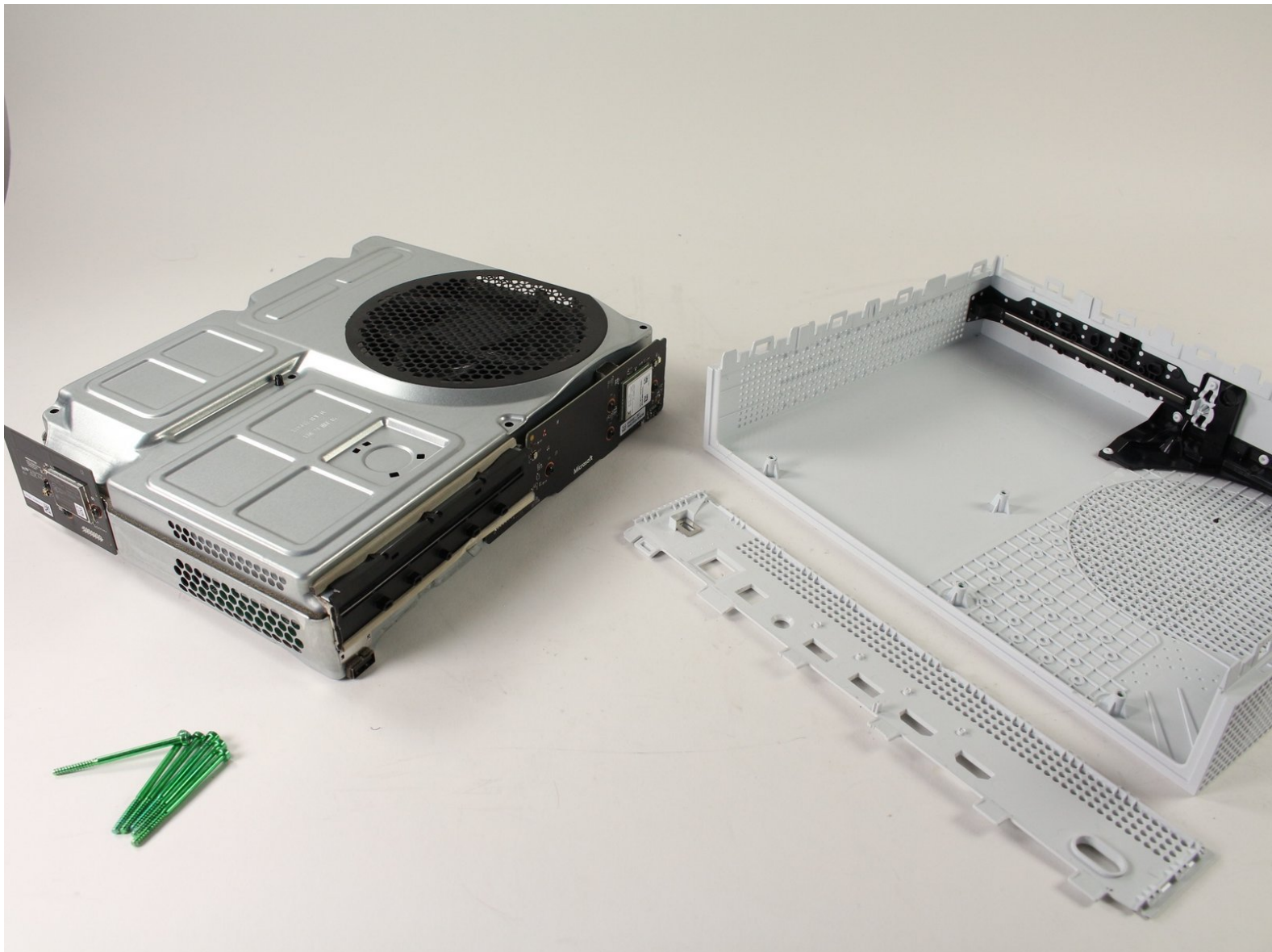




Xbox One S Case Replacement

This guide will show you how to remove and replace the plastic exterior case on the Xbox One S.

Written By: Christopher Chen



INTRODUCTION

When taking the case off of the Xbox One S, take care to not damage the clips.



TOOLS:

- [iFixit Opening Tools](#) (1)
- [T10 Torx Screwdriver](#) (1)



PARTS:

- [Xbox One S Top Case](#) (1)
- [Xbox One S Bottom Panel](#) (1)
- [Xbox One S Chassis and Rear Panel](#) (1)

Step 1 — Case



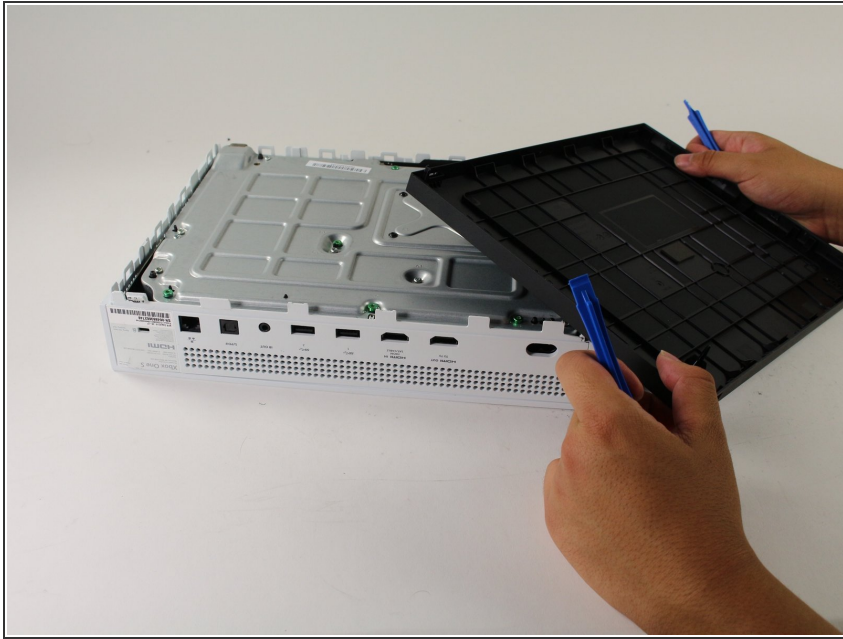
- Flip the Xbox One S so that the bottom of the case is facing upward.

Step 2



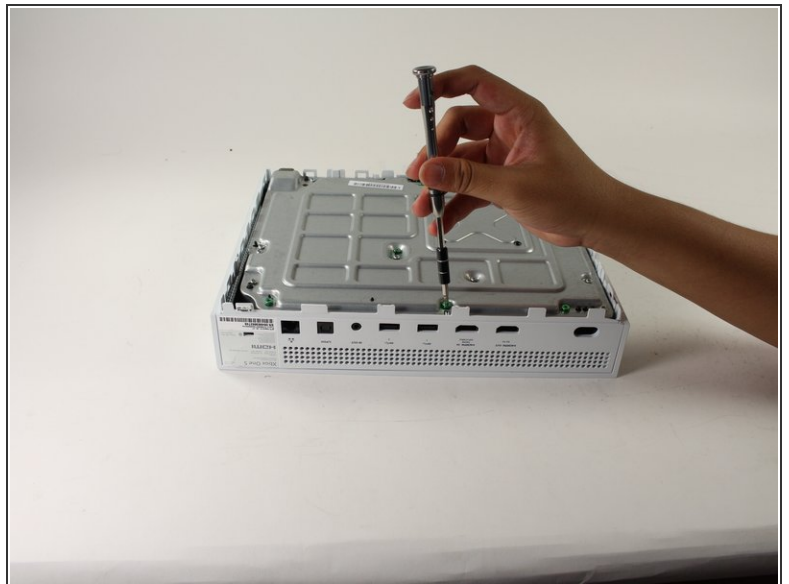
- Insert the plastic opening tool into the gap between the bottom of the case and the grated top side. Then find the clips in between that hold the case in place.
- Use the opening tool to pop the clips out. The best method is to pry the black case away from the bottom.
- ⓘ You will hear clicking sounds when you are prying the case open. It may be fairly difficult to remove the bottom.
- ⚠ It's possible that the clips may break when you remove the bottom from the case.
- ⓘ We recommend starting at one corner and sliding the prying tool along the edges of the Xbox One S. Once the first few clips are opened you can lift the cover up to find the remaining clips.

Step 3



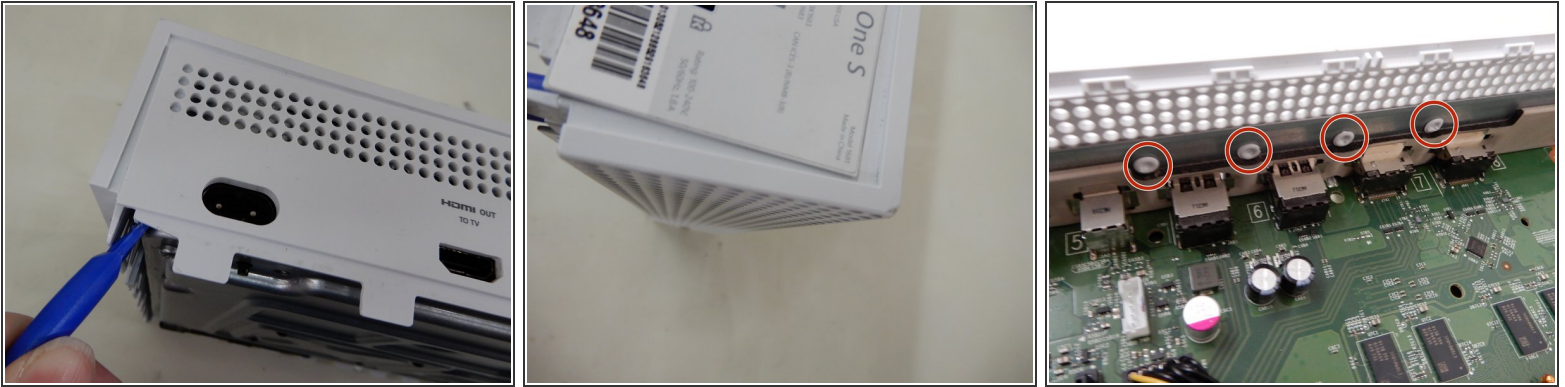
- Once all of the clips are opened, remove the bottom part of the case.

Step 4



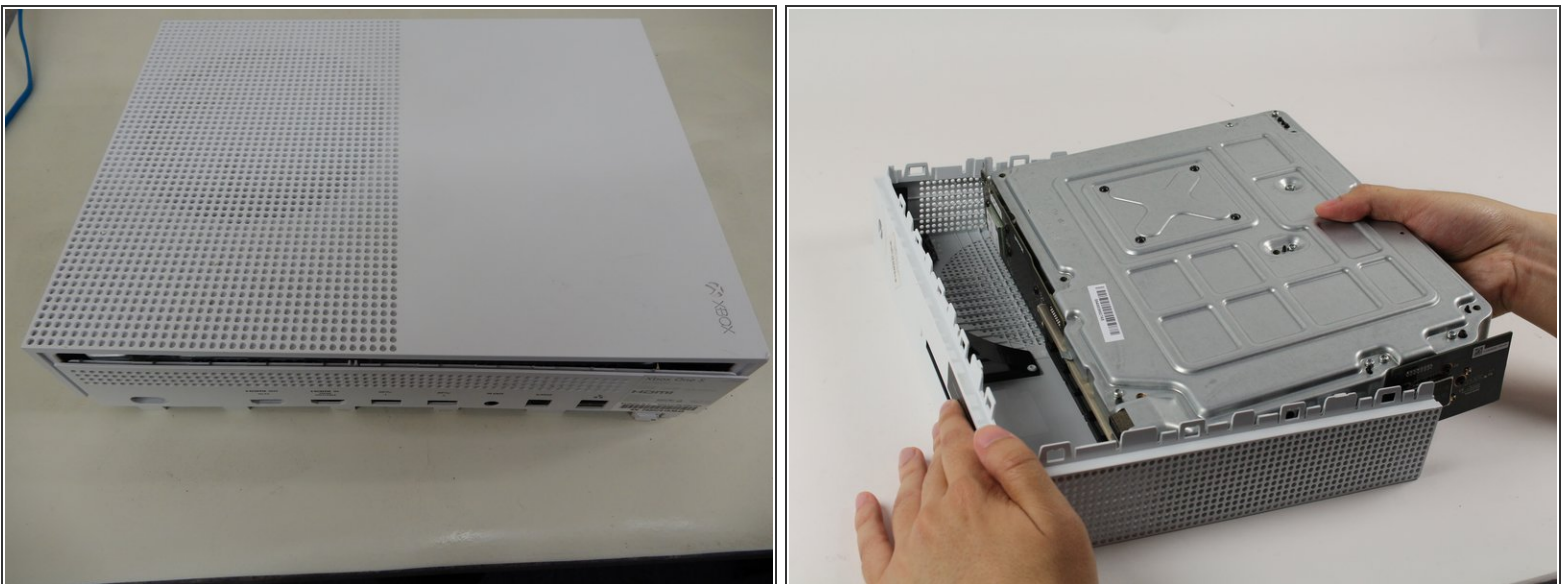
- Find all of the green screws on the metal case labeled F1 through F6.
- Take the T10 Torx screwdriver and remove the six 50 mm long screws.

Step 5



- Insert a pry tool gently between the top cover and metal casing on both sides to prepare the cover for removal.
- ⓘ This step is necessary because you need to pry interior rivets away from the exterior case. The interior rivets that hold the case in place are circled in the last image. After you gently pry in the areas demonstrated, the side panel of the exterior case will be able to come off of the rest of the casing.
- ⓘ Look at the image in Step 7 for clarification on how the exterior case disassembles.

Step 6



- Gently separate the interior case from the white exterior case using the appropriate method.

To reassemble your device, follow these instructions in reverse order.