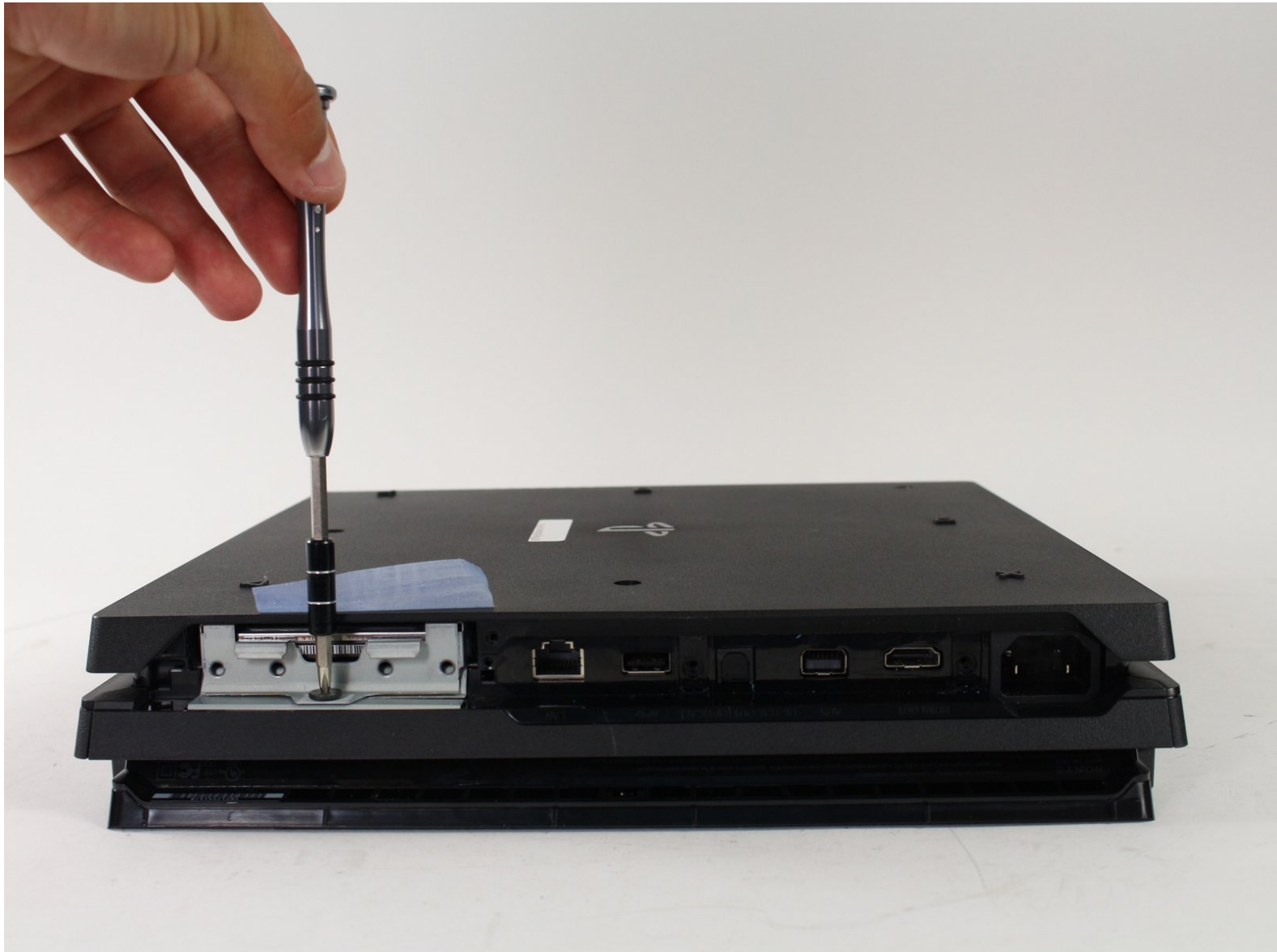




PlayStation 4 Pro Hard Drive Caddy Replacement

This guide will show the steps needed to remove the Hard Drive Caddy from the PlayStation 4 Pro.

Written By: Ethan Pence



INTRODUCTION

This guide will show how the Hard Drive Caddy of the PlayStation 4 Pro is removed. With nothing more than a screwdriver, the Hard Drive Caddy is one of the easier components of the PS4 Pro to remove and replace.



TOOLS:

- [Phillips #0 Screwdriver](#) (1)



PARTS:

- [PlayStation 4 Pro Hard Drive and Enclosure](#) (1)

Step 1 — Hard Drive Caddy



- Flip the console upside down.
- Use your finger to pull and snap off the plastic cover over the hard drive.

Step 2



- Use a Phillips #0 Screwdriver to remove the single screw securing the hard drive caddy.
- Pull the hard drive caddy straight out.

To reassemble your device, follow these instructions in reverse order.