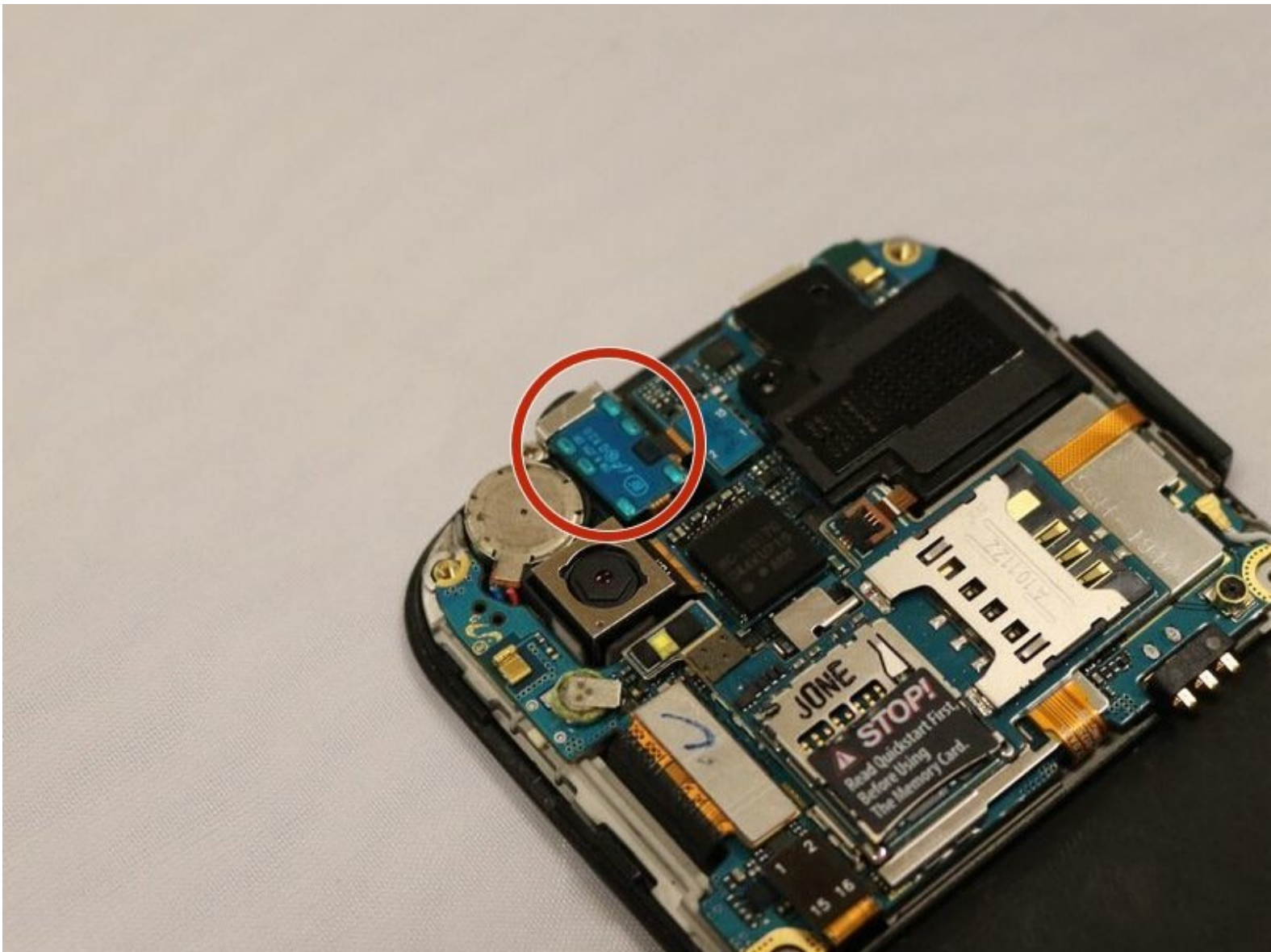




Samsung Focus Auxiliary Port Replacement

Replacing the auxiliary port for external media devices.

Written By: Ignatius Tipligin



INTRODUCTION

This guide will teach users how to replace the auxiliary port in the Samsung Focus. The auxiliary port is easy to break and here are some helpful steps of how to replace it.

TOOLS:

- [Spudger](#) (1)
 - [Phillips #000 Screwdriver](#) (1)
-

Step 1 — Auxiliary Port



- Remove the back cover with the spudger.

Step 2



- Take out the battery.

Step 3



- Using the PH000 screwdriver, remove the 7 screws in the back of the device.

Step 4



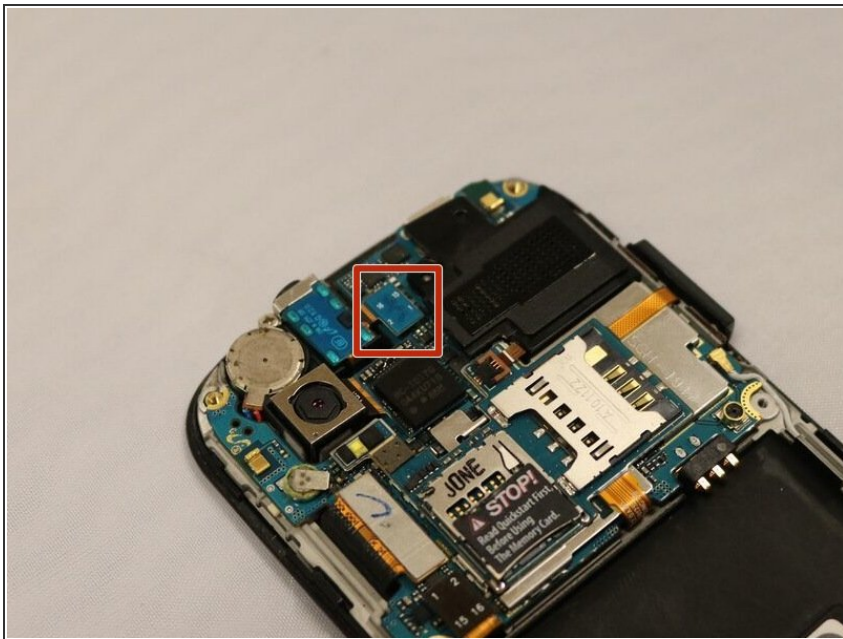
- Remove the previously held panel with the spudger.

Step 5



- Remove the Phillips #000 screw that binds the auxiliary port.

Step 6



- To remove the port disconnect the cable indicated.
- Replace.

To reassemble your device, follow these instructions in reverse order.