



BlackBerry World Edition 8830 Battery Replacement

Use this guide to install a new battery.

Written By: Martha de Maria y Campos



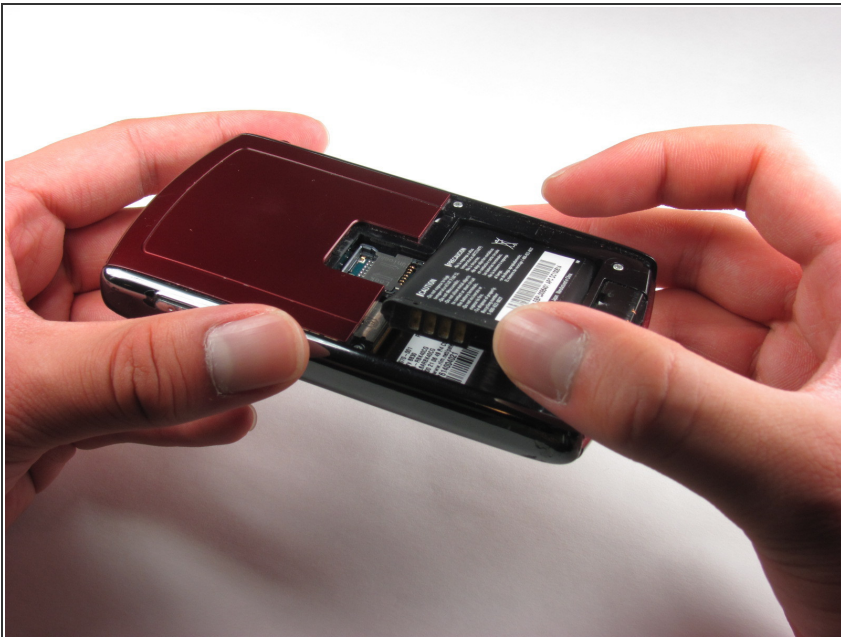
Step 1 — Battery



✦ Before beginning this installation, make sure phone is powered off .

- Turn phone over to the backside.
- Press down on the lower portion of the back cover.
- Slide the lower portion down to remove the cover and reveal the battery.

Step 2



- Remove the battery from the phone.

To reassemble your device, follow these instructions in reverse order.

