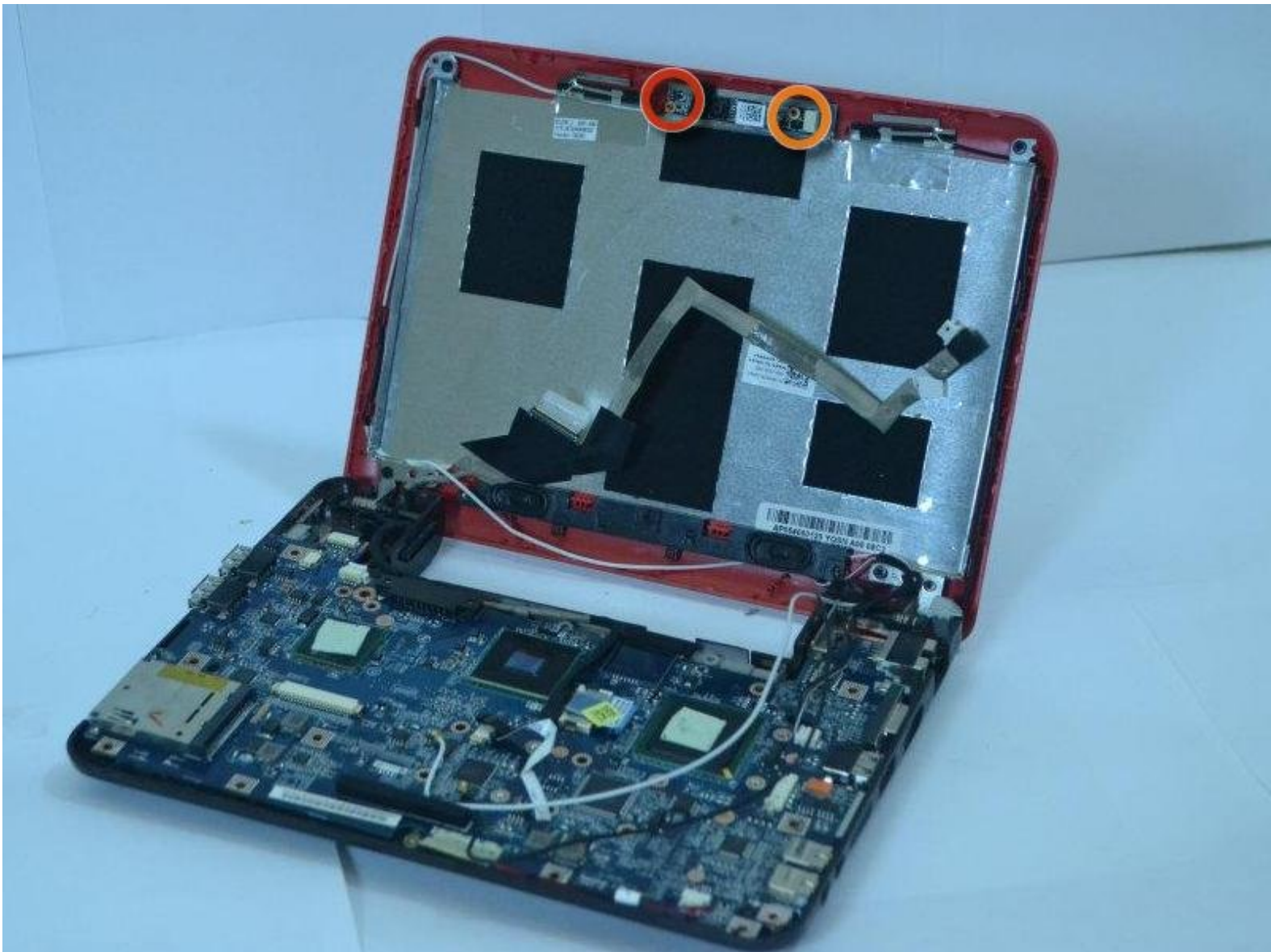




Dell Inspiron 910 Web Camera Replacement

Install or replace web camera in a Dell Inspiron 910

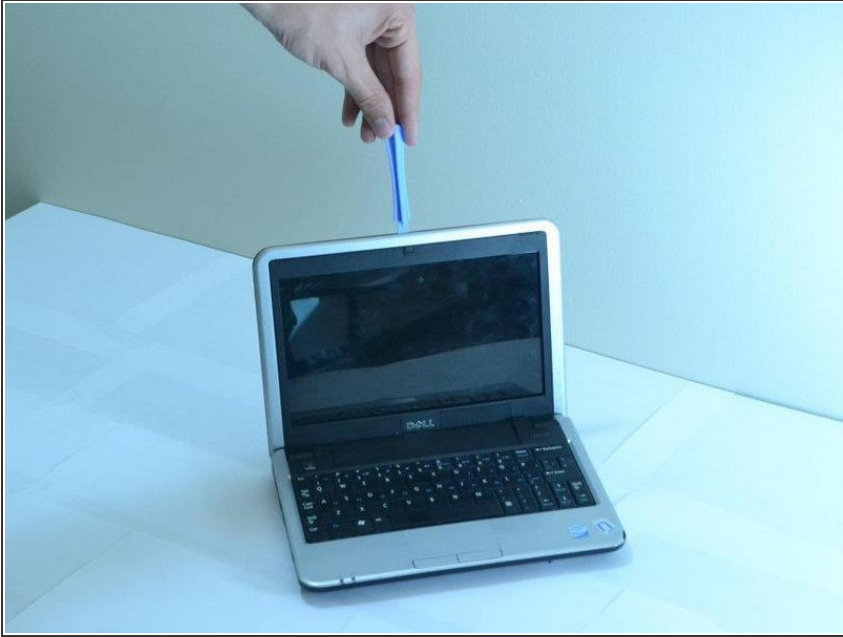
Written By: Arnesh Mudaliar



 **TOOLS:**

- Flathead 3/32" or 2.5 mm Screwdriver (1)
 - Phillips #00 Screwdriver (1)
-

Step 1 — Screen



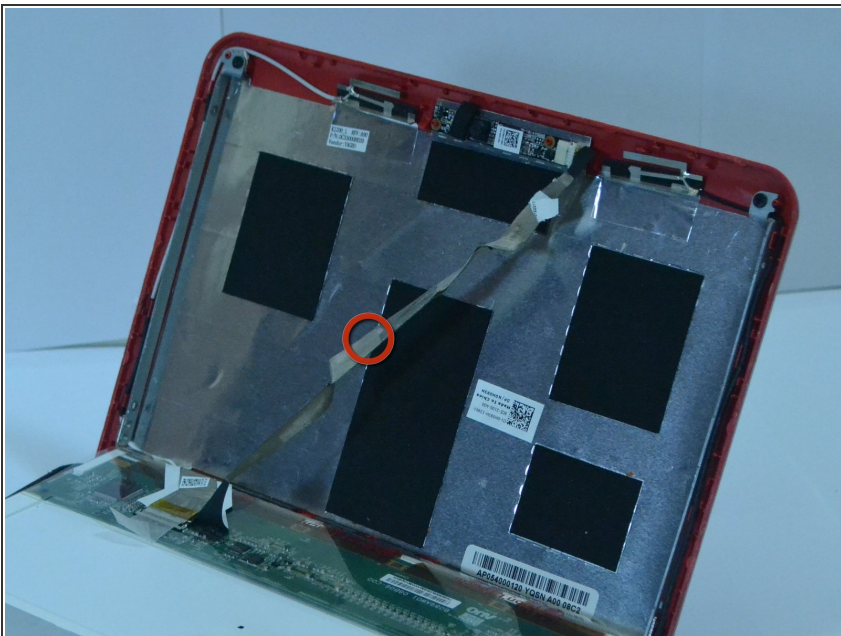
- Use a plastic opening tool to pry the silver portion front of the top away from the colored portion.

Step 2



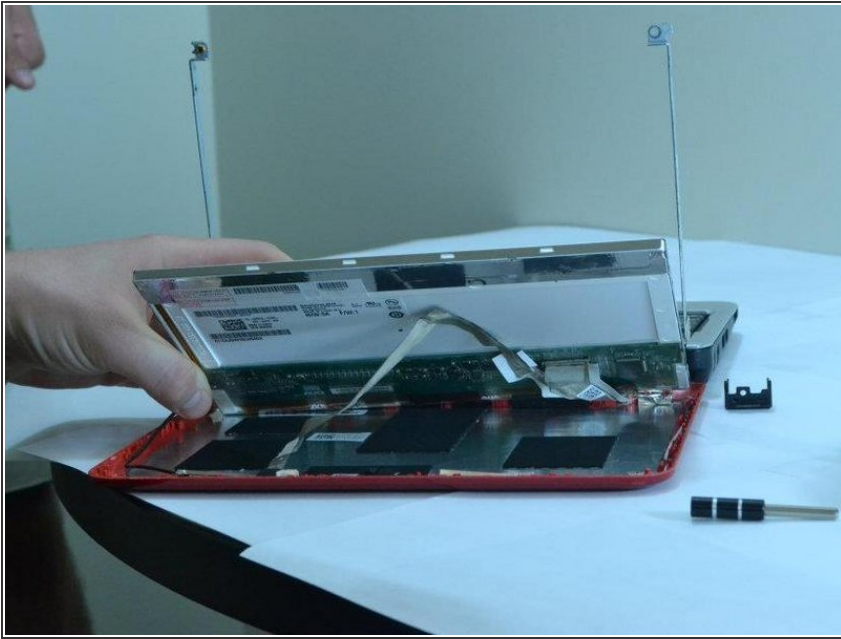
- There should be two screws holding the metal casing that holds the screen. Using your Philips 0 Screwdriver, unscrew them and pull the casing outwards.
- NOTE: Keep track of where you put the screws after you remove them. Keep screws of the same size together and away from screws of different sizes.

Step 3



- Now that you've pulled out the screen casing, look for four screws, there will be two on the right and left side of the casing.
- Using your off hand's thumb, hold the screen in place. Using the Philips 0 Screwdriver, unscrew them.
- Carefully remove your hand, and gently let the screen down.

Step 4



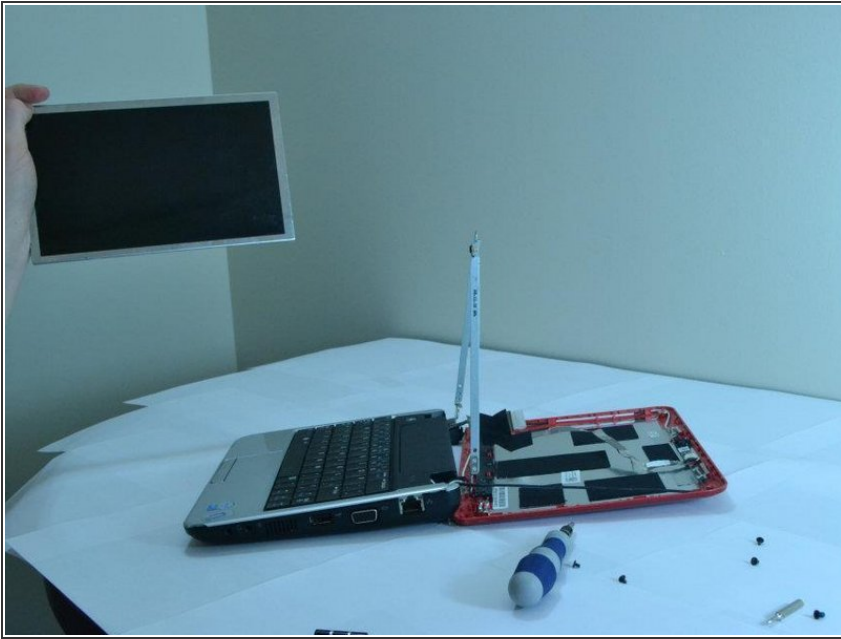
- Disconnect the cord connecting the screen to the rest of the laptop; the cord will be affixed to the screen using tape, so it can be safely removed. The actual cord connection is at the circuit board.

Step 5



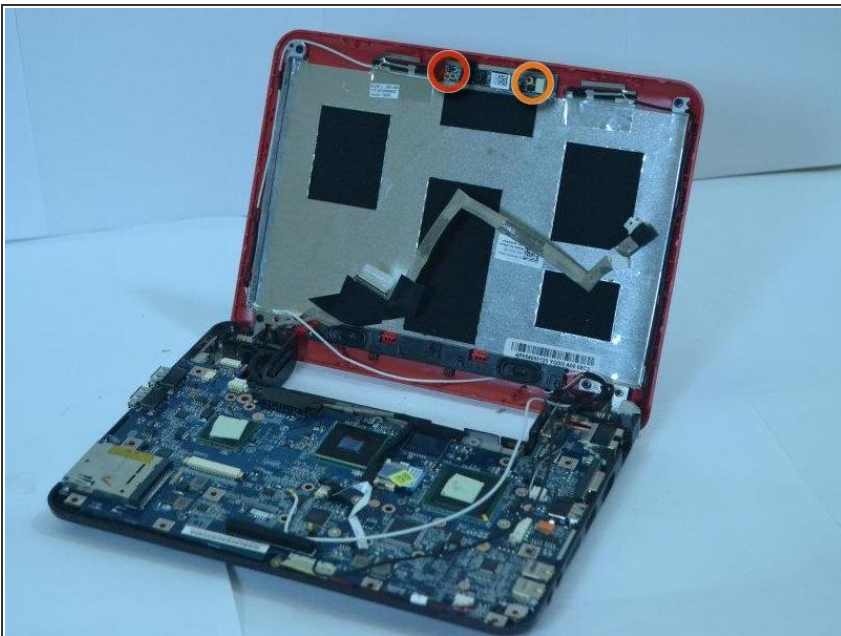
- Pull down the laptop's back; the screen should be left upright, held in place by two metal strips going along its sides.
- On either side of these strips there will be two screws. Unscrew them on both sides. While unscrewing the screws on the second side, make sure to hold the screen so that it doesn't fall when the screws are removed.

Step 6



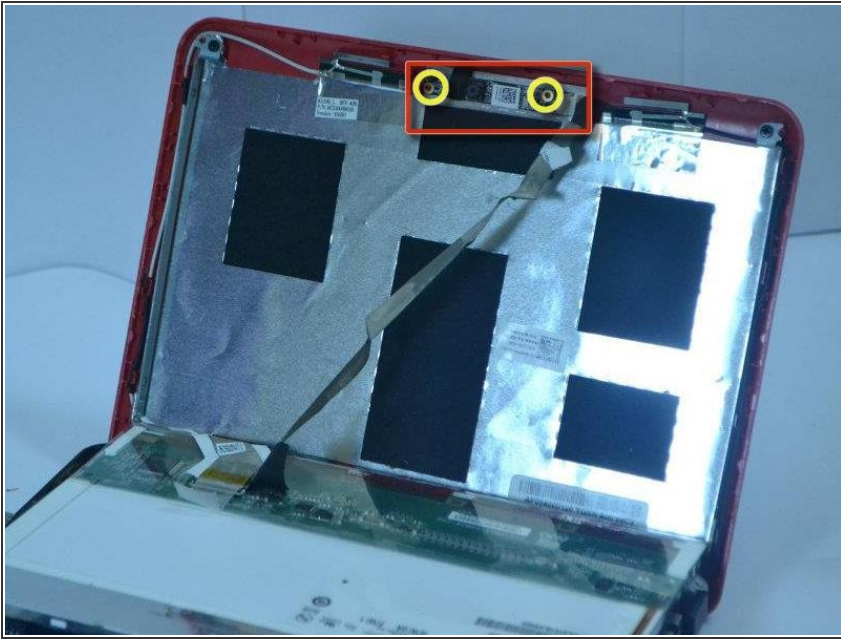
- Pull the screen out. Congratulations! You have removed the screen.

Step 7 — Web Camera



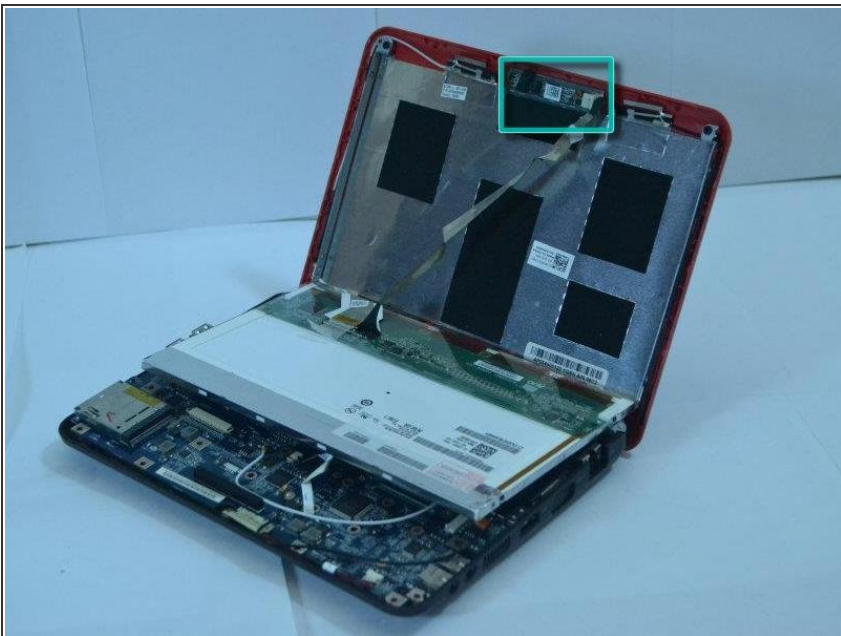
- Remove the 2 small screws above the screen at the center of the lid.

Step 8



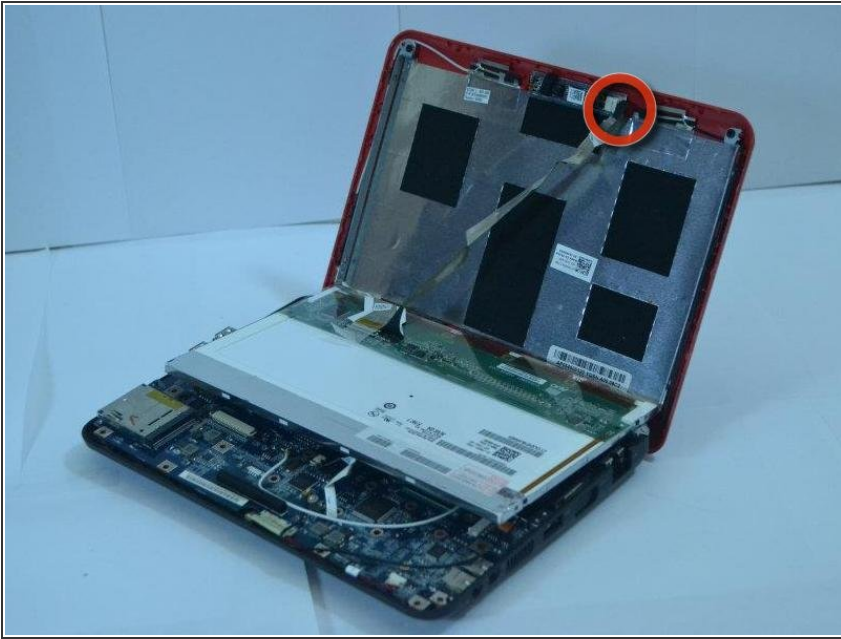
- Insert the webcam module so that the 2 screw holders match up with the 2 holes in the module

Step 9



- Replace and tighten the 2 screws so that the module is held in place.

Step 10



- Carefully connect the white cable running along the back of the screen to the appropriate docking station in the webcam module.

To reassemble your device, follow these instructions in reverse order.