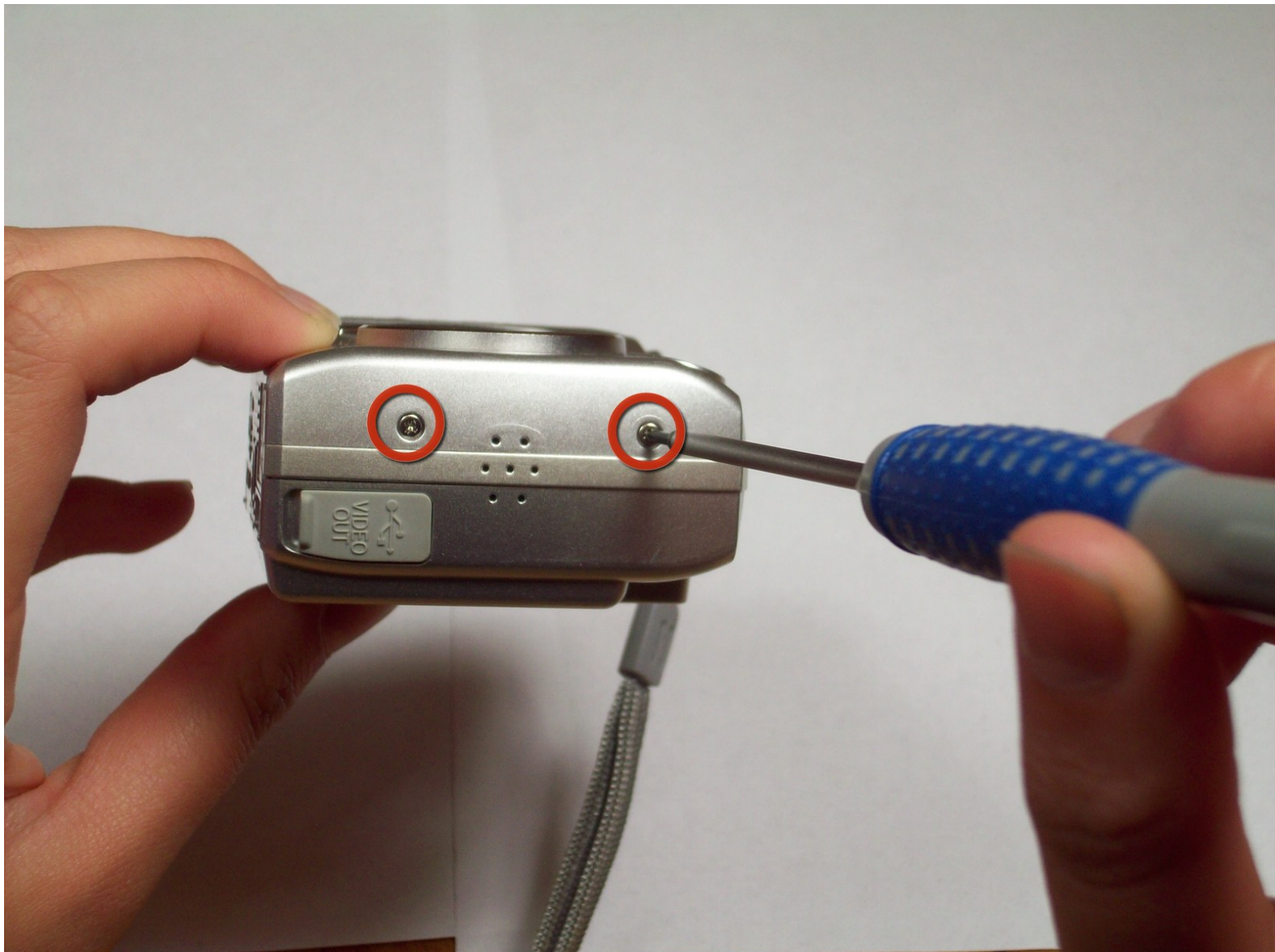




Removing Nikon Coolpix 4600 Front and Rear case

Gives a step by step procedure to remove the front and rear case for other internal repairs.

Written By: Nathan Sperling



INTRODUCTION

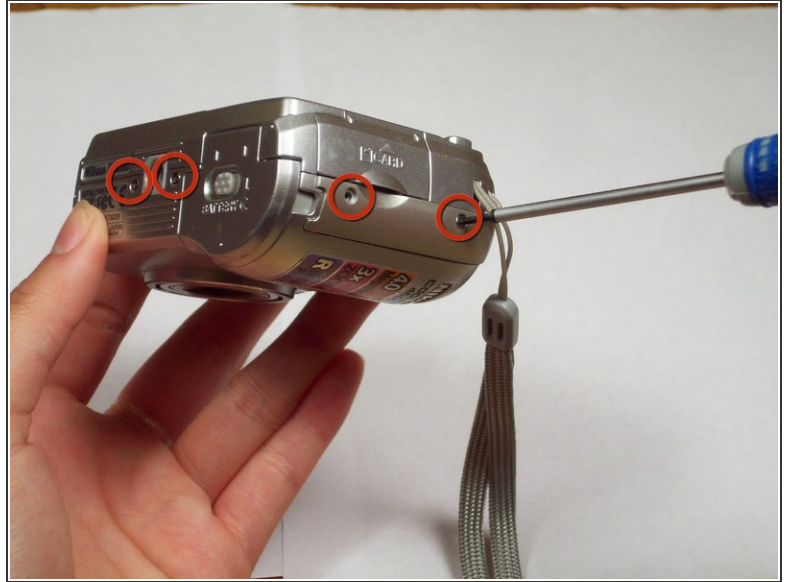
This installation guide will help you remove the rear and front casing of your Nikon Coolpix 4600.



TOOLS:

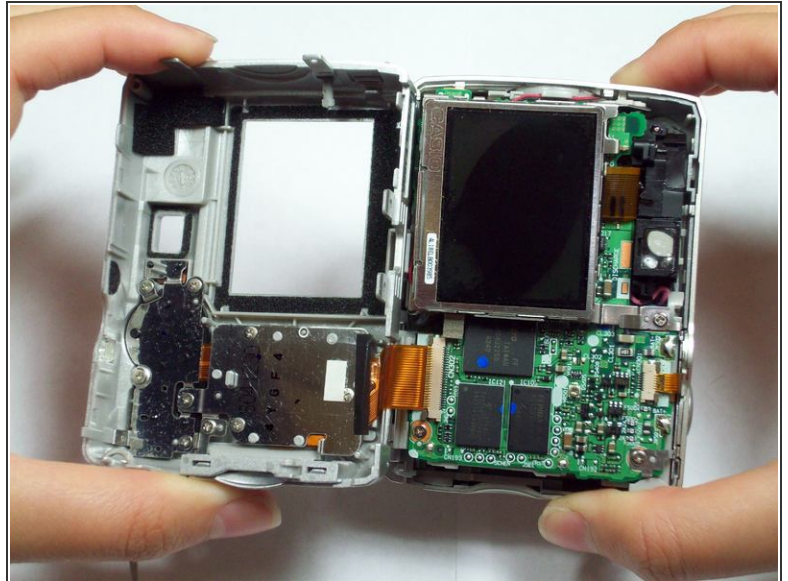
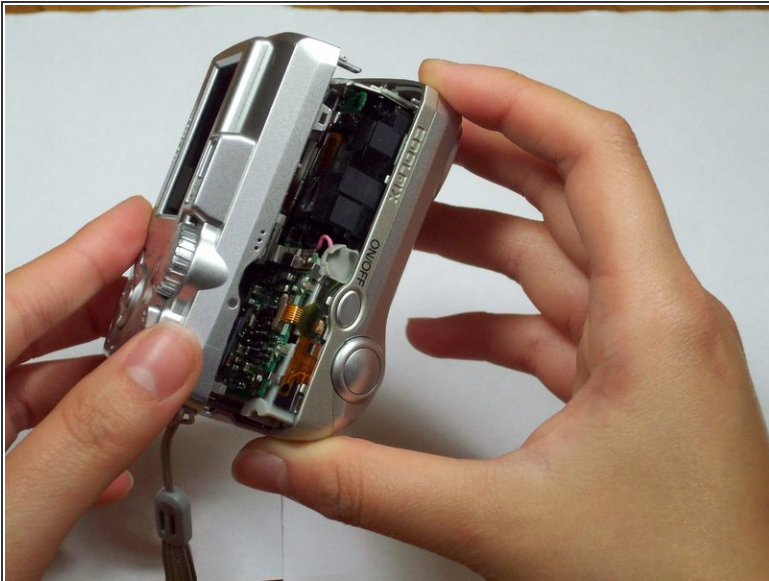
- [Phillips #00 Screwdriver](#) (1)
-

Step 1 — Front and Rear Case



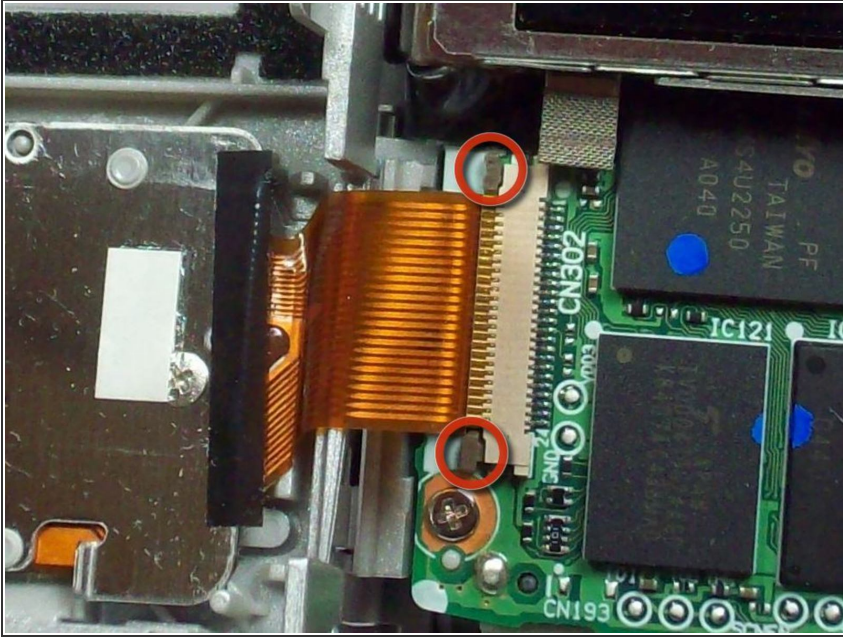
- Locate the six screws on the outside of the camera (2 3.3 mm on the bottom, 2 5.25 mm on the left, and 2 5.25 mm on the right).
- Using a Phillips 00 screwdriver, remove all of the six screws.

Step 2



- Carefully pull the front and back case apart.
- ⓘ The front case is attached to internal components and cannot be removed independently.

Step 3



- Look closely at the connection between the ribbon cable and the motherboard. Locate the two grey tabs on either side of the connecting bracket.
- Slide the grey tabs toward the bottom of camera. Gently disconnect the ribbon cable from the motherboard.
- After disconnecting the data ribbon, you can now separate the back case from the front case.

To reassemble your device, follow these instructions in reverse order.

This document was last generated on 2017-07-16 08:26:51 AM.