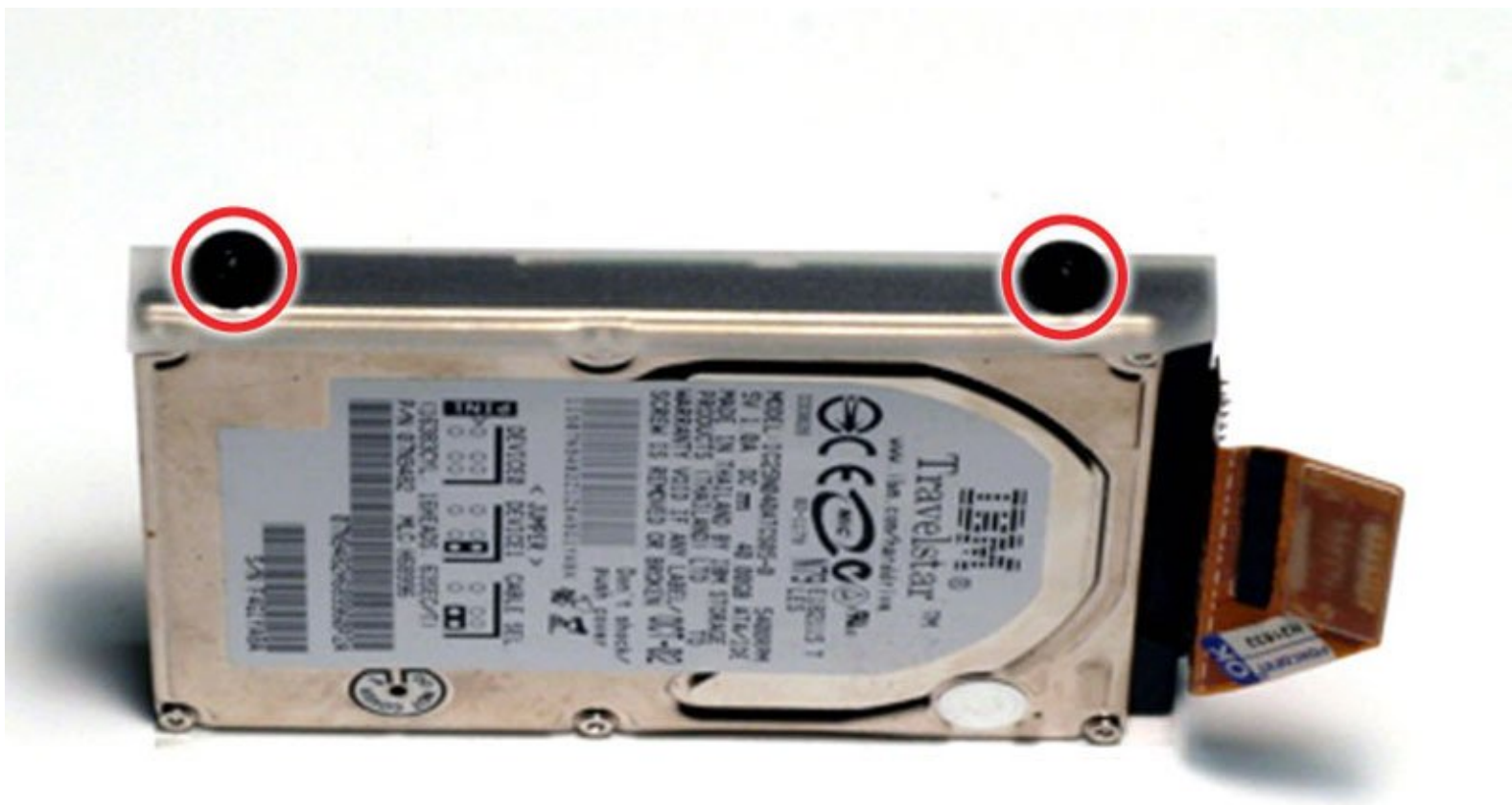




PowerBook G4 Titanium DVI Hard Drive Replacement

Written By: iRobot



INTRODUCTION

You can install hard drives up to 12.5mm thick.



TOOLS:

- [T8 Torx Screwdriver](#) (1)



PARTS:

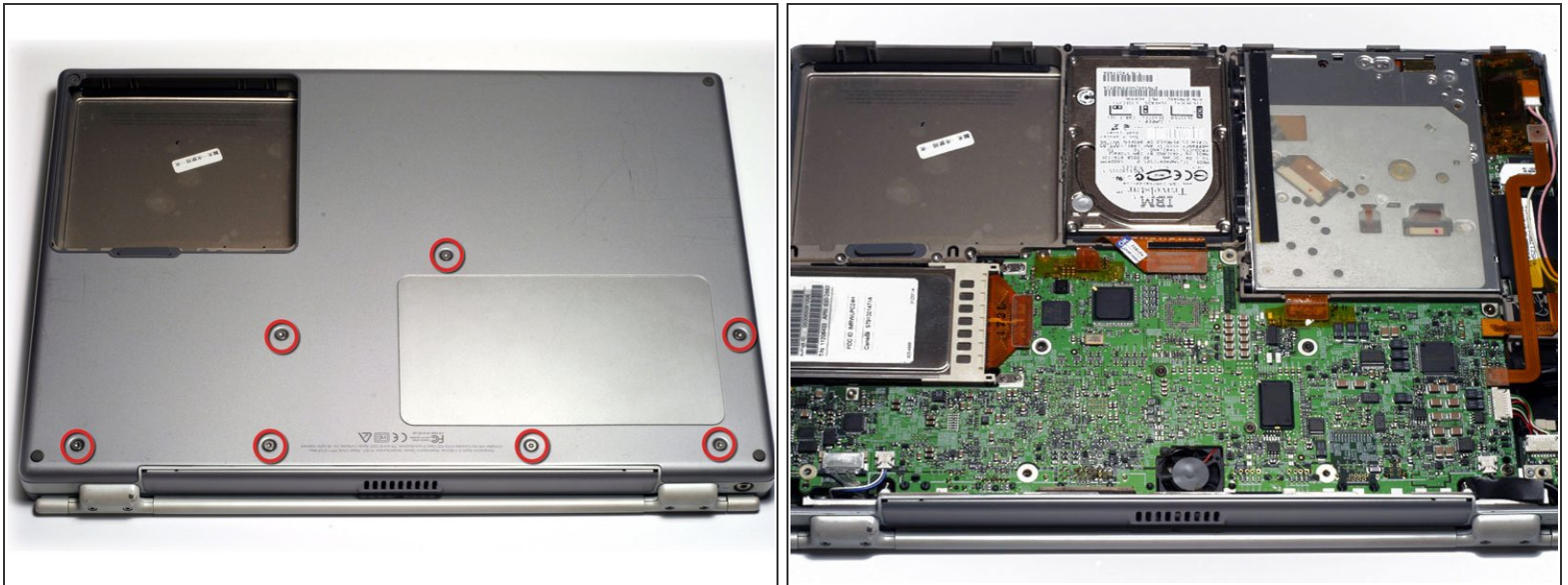
- [120 GB 5400 RPM Western Digital ATA Hard Drive \(New\)](#) (1)
- [G4 Titanium DVI Restore CDs \(667/800\)](#) (1)

Step 1 — Battery



- Locate the battery release tab on the underside of the G4.
- Slide the battery release tab to the left and lift the battery out of the computer.

Step 2 — Lower Case



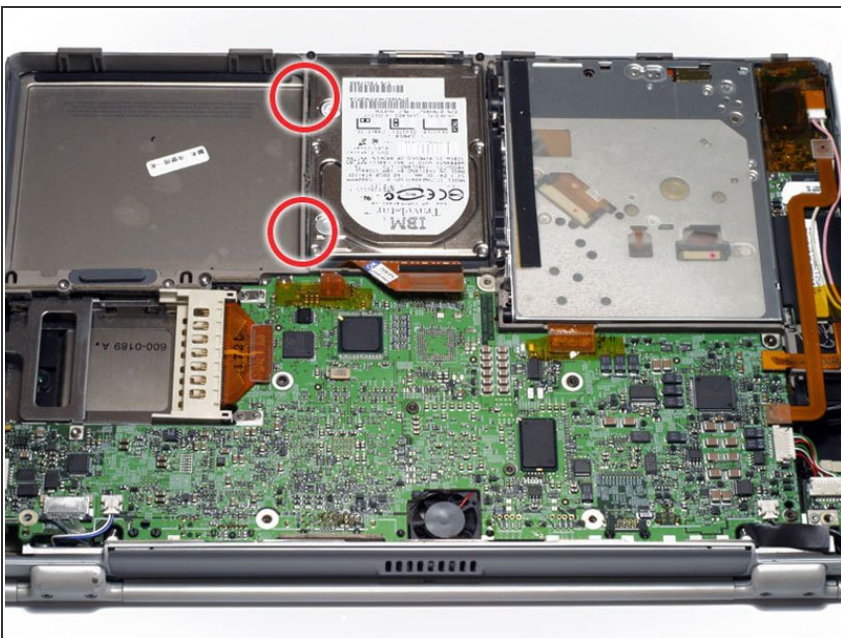
- Remove the seven T8 Torx screws from the lower case.
- Using your thumbs, slide the lower case toward the front of the computer.
- The lower case may stick in the front on a tab just above the center of the optical drive. Be careful as you work the case off, or you may break the thin strip of plastic just above the drive.
- Lift the lower case off.

Step 3 — Hard Drive



- Disconnect the hard drive ribbon from the logic board using a spudger or the tip of your finger.

Step 4



- To free the hard drive, remove the two T8 Torx screws from the right wall of the battery housing.

Step 5



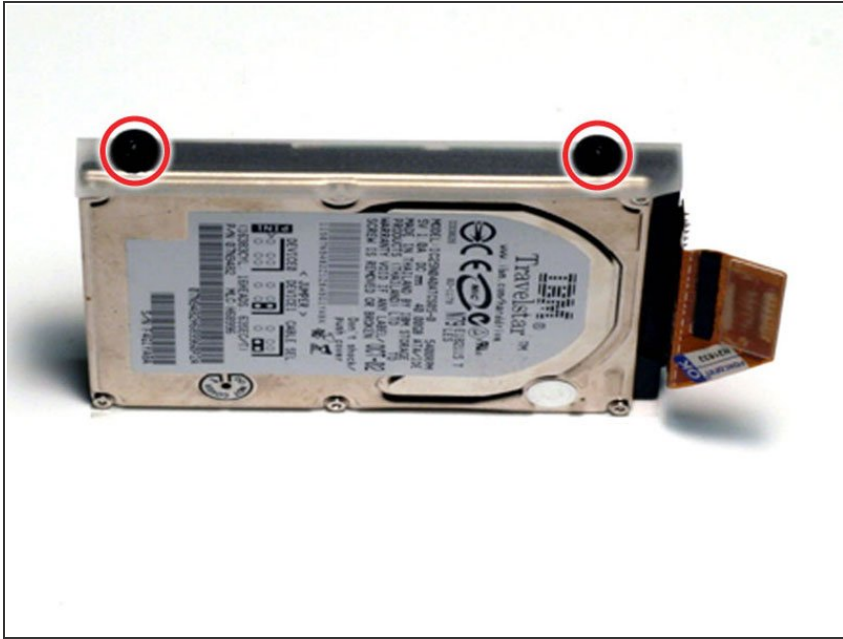
- Remove the hard drive by lifting the left edge up and out of the computer.
- ⓘ There are four rubber bumpers that fit over the hard drive screws. Ensure that these bumpers come out when you remove the hard drive.

Step 6



- Your laptop should look approximately like this.

Step 7 — Hard Drive



- Remove the two black plastic bumpers and two T8 Torx screws from the side of the hard drive.

Step 8



- Grasp the orange ribbon cable and disconnect it from the hard drive. If the connector is tight, gently rock it from side to side.
- ⚠ Be sure to pull evenly on both sides as uneven force may damage the hard drive pins and render your data inaccessible.
- ⓘ If you are installing a new hard drive, we have an [OS X install guide](#) to get you up and running.

To reassemble your device, follow these instructions in reverse order.