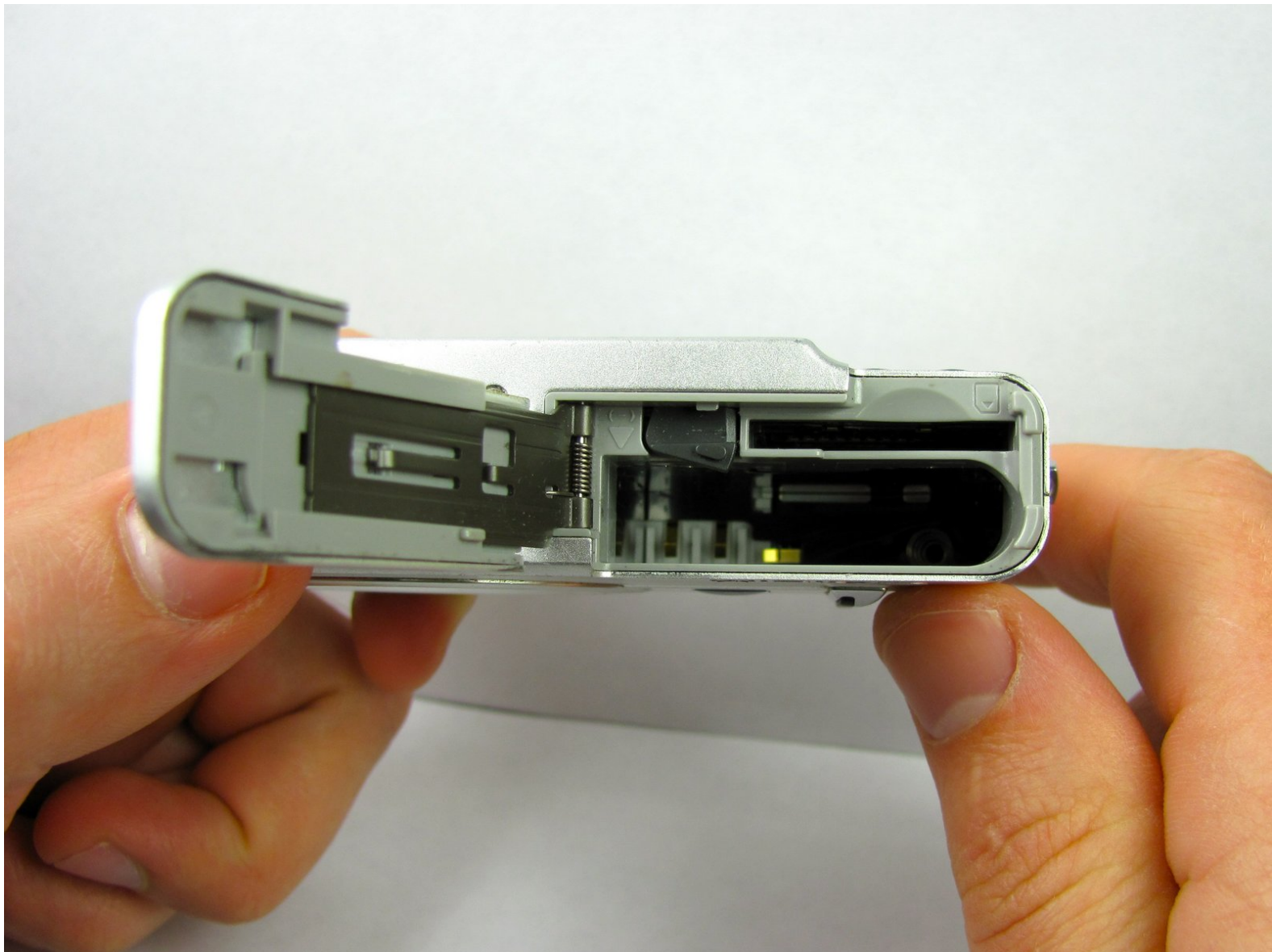




Casio Exilim EX Z55 Battery Replacement

Replace your dead battery to give power to your camera.

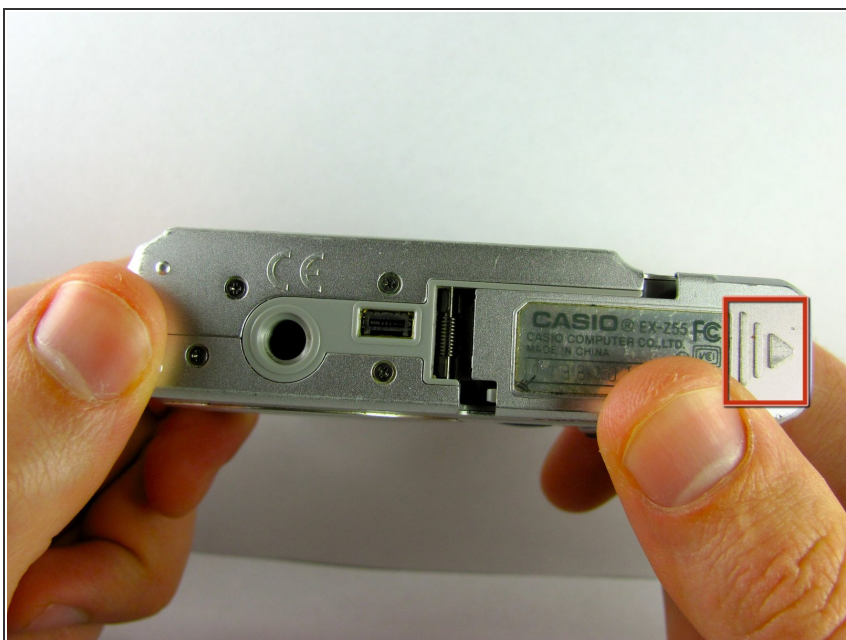
Written By: Patrick Stalwick



INTRODUCTION

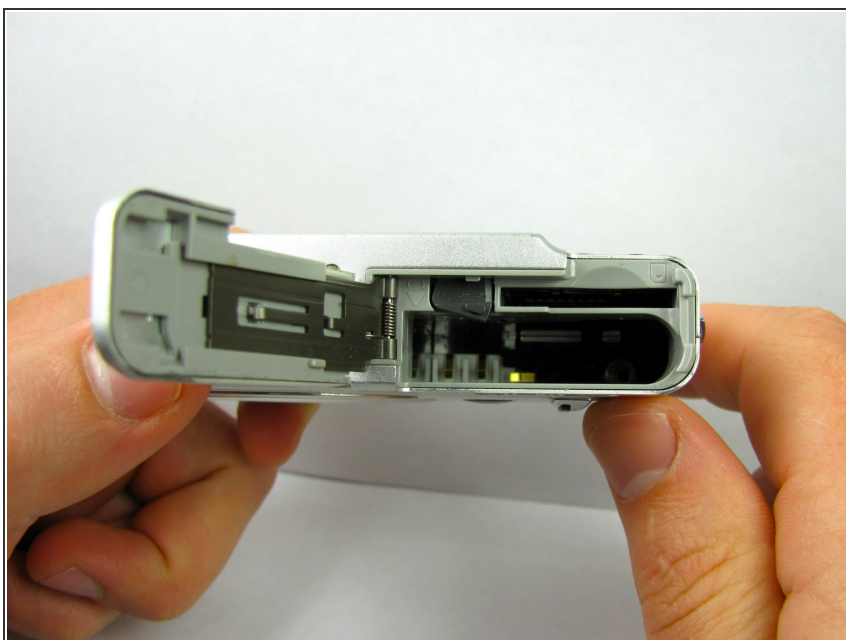
This guide will show how to open the camera case so that the battery can be taken out and installed. The battery compartment is located on the bottom side of the camera.

Step 1 — Battery



- Slide battery compartment cover in the direction of the arrow located on the cover.

Step 2



- The cover will spring open, revealing the battery compartment. Here is where you will remove or install the battery.

To reassemble your device, follow these instructions in reverse order.