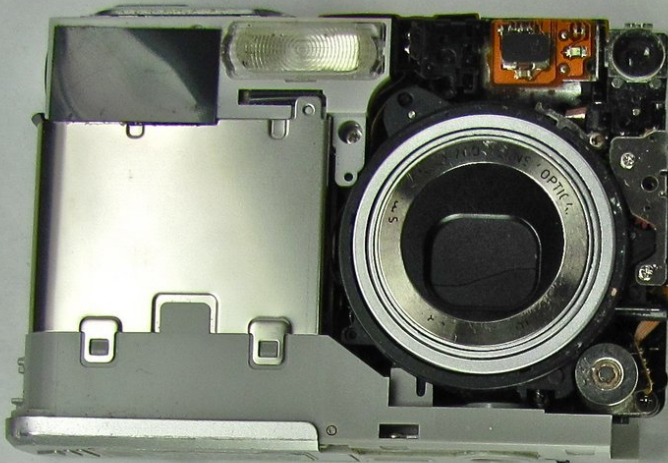




# Casio Exilim EX Z55 Front Case Replacement

How to replace or remove the front case of this camera. (Front and Back case come off simultaneously)

Written By: Patrick Stalwick



---

## INTRODUCTION

This guide shows how to remove the front case from the rest of the camera. You may have to do this to replace a damaged front cover or to access the inner parts of the camera.

---

### TOOLS:

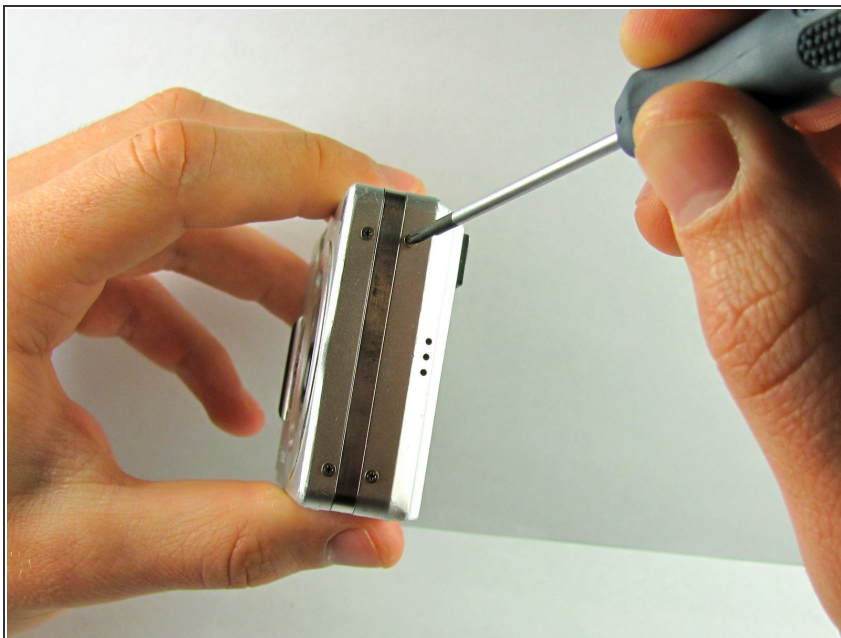
- [Phillips #00 Screwdriver](#) (1)
-

## Step 1 — Front Case



- Locate 12 screws. Four on the left, four on the right, and four on the bottom.

## Step 2



- Using the #00 Phillips screwdriver, remove the four 3.66mm screws from the bottom outer case, and the eight 1.75mm screw from the sides of the case.

### Step 3



- Separate the front case from the body of the camera.

To reassemble your device, follow these instructions in reverse order.