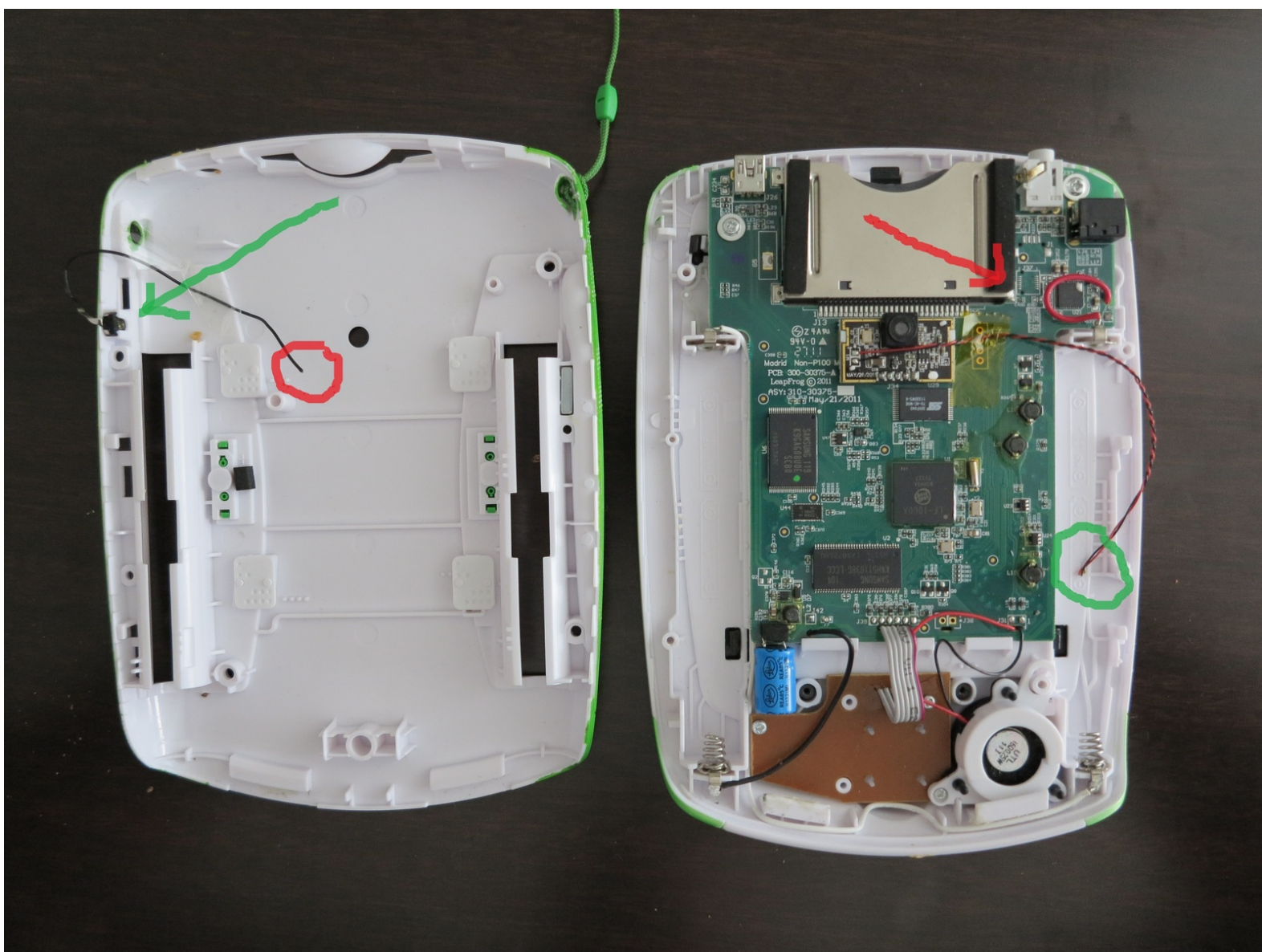




Disassembling LeapPad Explorer Tablet Interior Soldered Wire Connections

Opening the LeapPad Explorer is tricky, because there are short soldered wires that connect the back and the front that will tear out easily. This guide will illustrate where to reconnect the soldered wires.

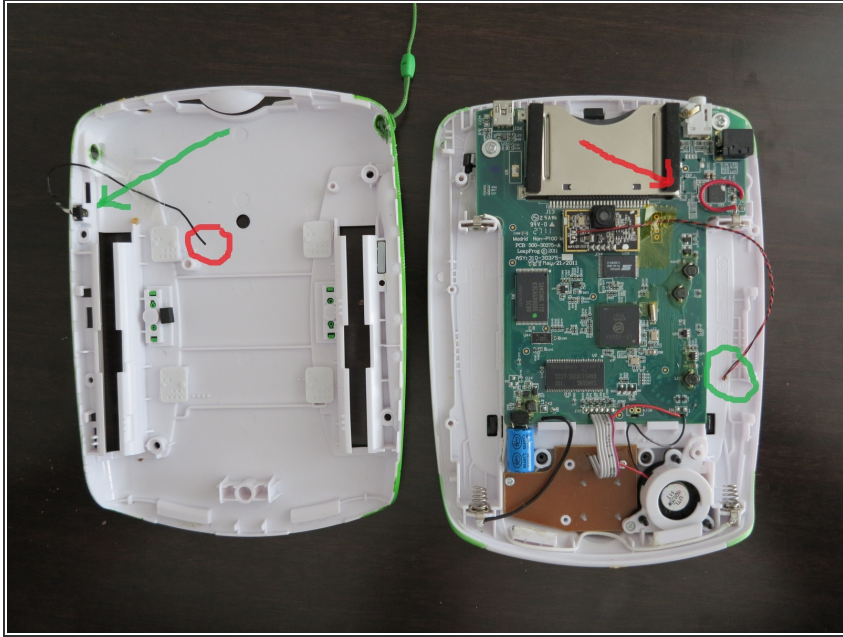
Written By: ewkpates



 **TOOLS:**

- [Soldering Station](#) (1)
-

Step 1 — Interior Soldered Wire Connections



- The back panel (pictured left) has a black wire (end of wire circled red). The wire solders to the bottom right corner of the card drive.
- The front panel (pictured right) has a black and red wire (end of wired circled green). This wire solders to a small circular spot next to where the black wire connects to the back (from above).

To reassemble your device, follow these instructions in reverse order.

This document was last generated on 2017-06-19 09:43:23 AM.