



iPhone 7 Display Assembly Replacement

Detach the entire display assembly from the iPhone 7 to clear the way for other repairs.

Written By: Evan Noronha



INTRODUCTION

Prereq-only guide for detaching the display assembly en route to other repairs.

TOOLS:

- [iFixit Opening Picks set of 6](#) (1)
- [P2 Pentalobe Screwdriver iPhone](#) (1)
- [iOpener](#) (1)
- [Suction Handle](#) (1)
- [Spudger](#) (1)
- [Tri-point Y000 Screwdriver Bit](#) (1)
- [Tweezers](#) (1)
- [Phillips #000 Screwdriver](#) (1)

PARTS:

- [iPhone 7 Screen](#) (1)
- [iPhone 7 Display Assembly Adhesive](#) (1)
- [iPhone 7 Front Panel Assembly Cable Bracket](#) (1)
- [iPhone 7/7 Plus Bottom Screws](#) (1)
- [iPhone 7 Rear Camera Connector Bracket](#) (1)
- [NuGlas Tempered Glass Screen Protector for iPhone 7](#) (1)

Step 1 — Display Assembly



⚠ Make sure the battery is disconnected before you disconnect or reconnect the cables in this step.

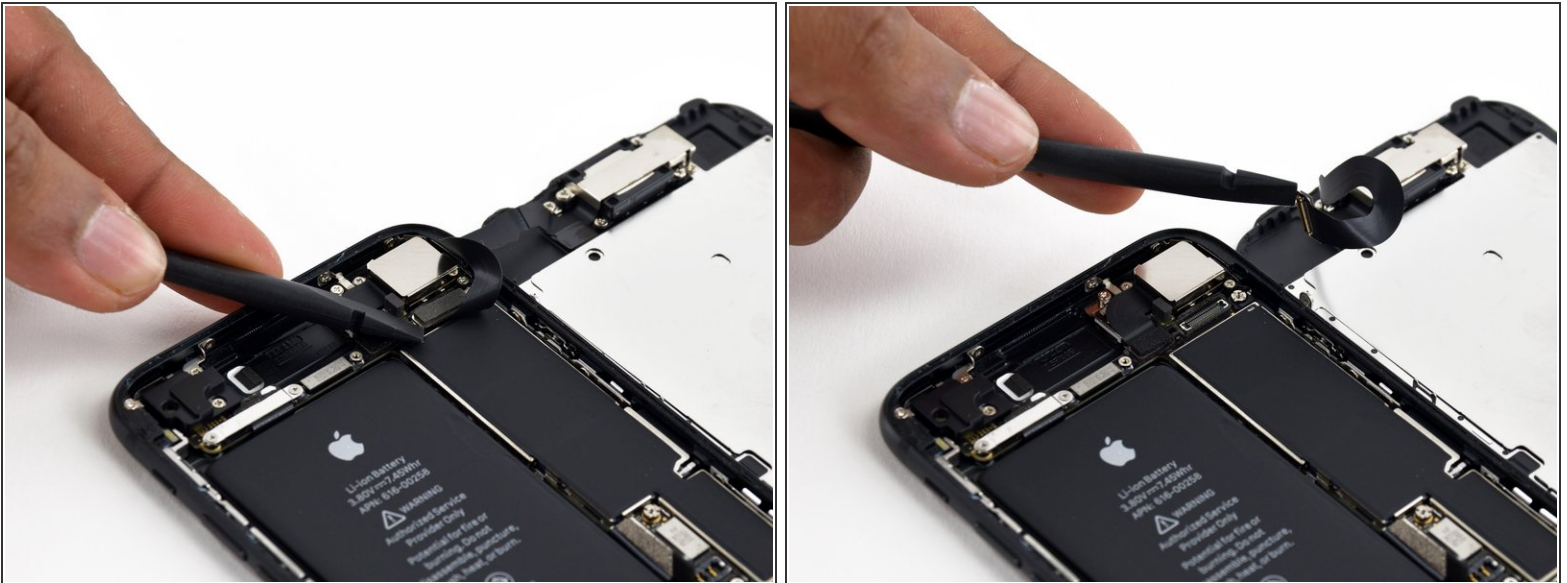
- Use a spudger or a fingernail to disconnect the two lower display connectors by prying them straight up from their sockets on the logic board.
- ☞ To reconnect these cables, press down on one end until it clicks into place, then repeat on the opposite end. **Do not** press down on the middle. If the connector is even slightly misaligned, the connector can bend, causing permanent damage.
- ☞ If you have a blank screen, white lines on the display, or partial or complete lack of touch response after reassembling your phone, try disconnecting and carefully reconnecting both of these cables and make sure they are fully seated.

Step 2



- Remove the two 1.3 mm Phillips screws securing the bracket over the front panel sensor assembly connector.
- Remove the bracket.

Step 3



- Disconnect the front panel sensor assembly connector from its socket on the logic board.
- ✦ This press connector should also be reconnected one end at a time to minimize the risk of bending.

Step 4



- Remove the display assembly.
- ☑ During reassembly, pause here if you wish to [replace the adhesive around the edges of the display.](#)

To reassemble your device, follow these instructions in reverse order.