



Canon PowerShot A1000 IS Case Disassembly

This guide will show you how to remove and reattach the plastic casing of a Cannon PowerShot A1000 camera.

Written By: Biff Wheeler



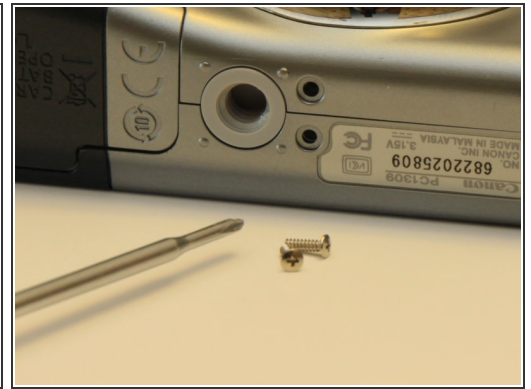
INTRODUCTION

The Cannon PowerShot A1000 IS is a compact digital camera. This guide gives instructions to remove and reattach the plastic casing when attempting internal repairs.

TOOLS:

- [Phillips #00 Screwdriver](#) (1)
 - [Tweezers](#) (1)
-

Step 1 — Canon PowerShot A1000 IS Case Disassembly



⚠ Transfer screws to a safe place upon removal.

- The case is held together with two types of screws: fine thread screws that attach the case to the metal parts below, and coarse thread screws that attach the case to the plastic battery compartment.

Step 2



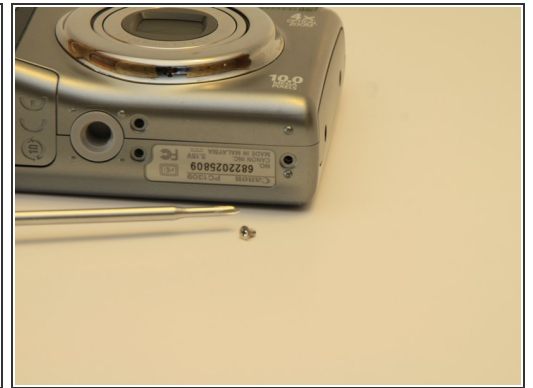
- Remove the two coarse thread screws on the side of the device, to the left of the camera lens.

Step 3



- Remove the two fine thread screws on the side of the device, to the right of the camera lens.

Step 4



- Remove the two coarse thread screws and the single fine thread screw from bottom the camera.

Step 5



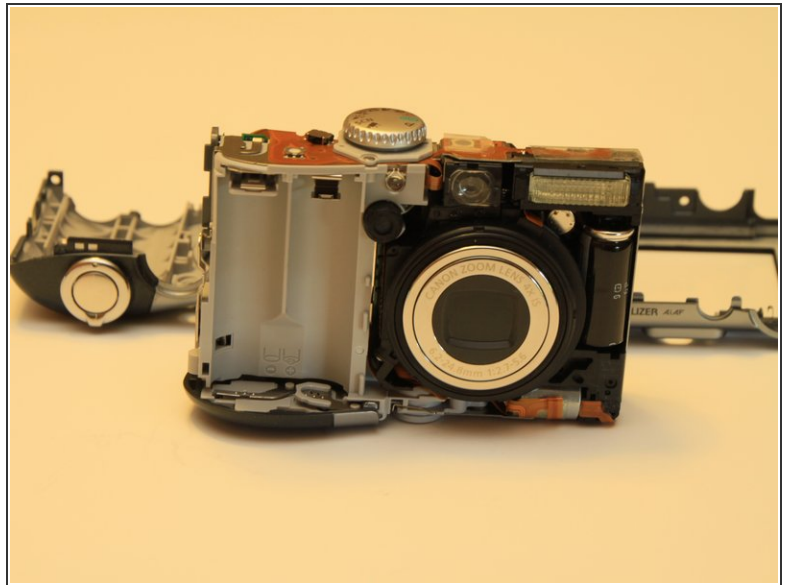
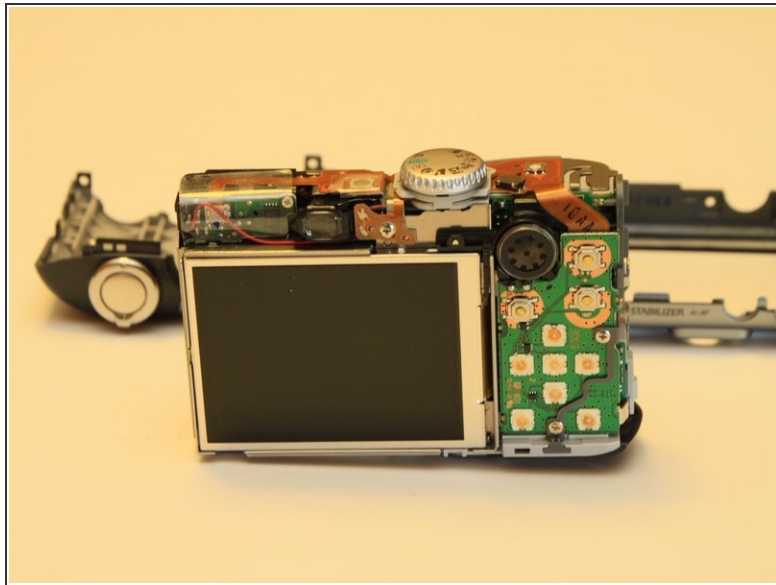
- Remove the one coarse thread screw underneath the battery cover.

Step 6



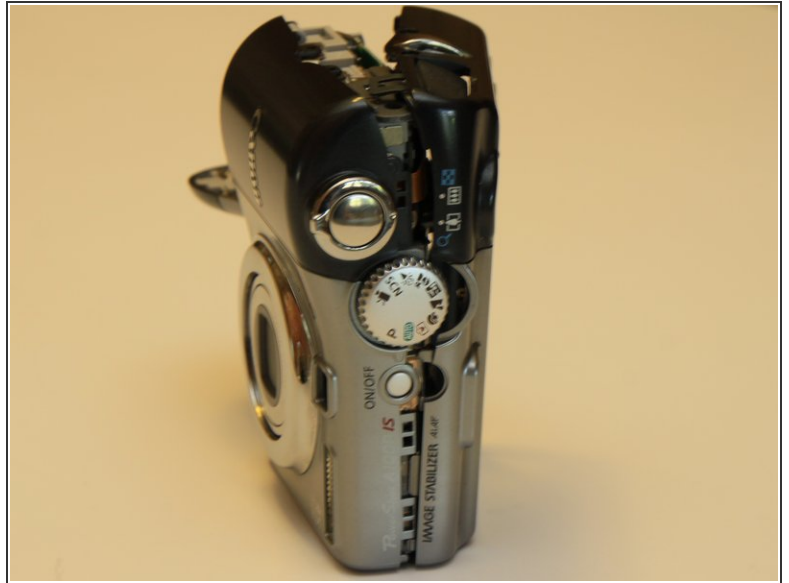
- Gently pry apart the two covers starting from the bottom. When there is a 1/4" gap, run your finger gently along the the top of the camera, on the back cover, to release the three catches that secure the shell.

Step 7



- Gently remove both sides of the casing.

Step 8



- ✦ When replacing the cover, remove the AV/USB rubber cover for easier reconstruction.
- ✦ Replace the front cover first leaving a small gap on the left hand side of the device for easy reattachment of the back cover.
- ✦ Reattach the back cover by aligning it with the front cover and snapping the latches into place. Secure with screws in any order.

To reassemble your device, follow these instructions in reverse order.

This document was last generated on 2019-05-17 04:42:49 AM.