



Nintendo 2DS XL Teardown

We pulled apart the 2DS XL on July 31, 2017.

Written By: Michael Degnan



INTRODUCTION

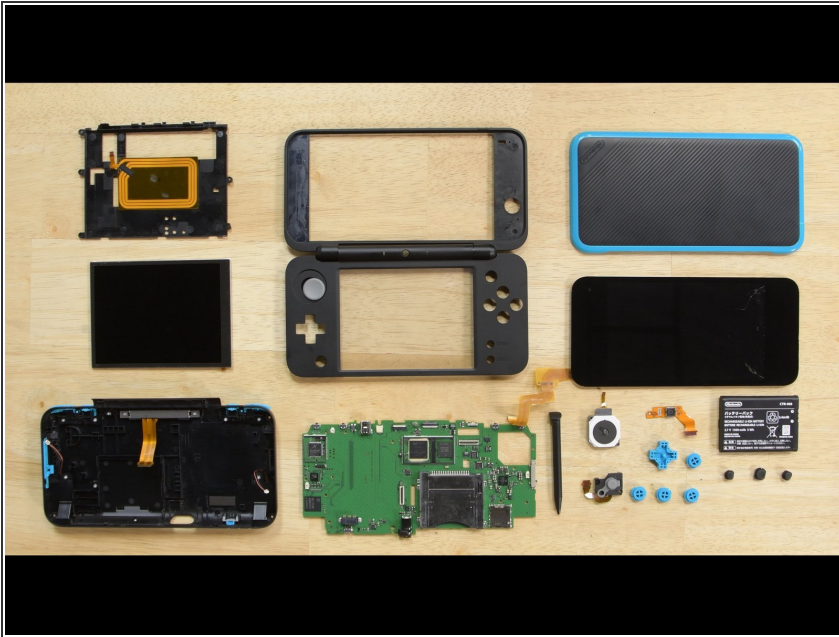
Nintendo's brand new handheld console, the 2DS XL can play all your 3DS games in 2D. But what happens when we break out our tools and bring the 2DS into the teardown dimension?????

When you have to give someone else a turn to play, find us on [Facebook](#), [Instagram](#), or [Twitter](#) to learn something new.

TOOLS:

- [Phillips #00 Screwdriver](#) (1)
 - [Spudger](#) (1)
 - [iOpener](#) (1)
 - [iFixit Opening Picks set of 6](#) (1)
 - [iFixit Opening Tools](#) (1)
 - [Tri-point Y00 Screwdriver Bit](#) (1)
-

Step 1 — Final Thoughts



- The battery is fairly easy to swap out once you remove the back cover.
- The rear panel is secured by tri-point screws.
- The headphone jack and charging connector are soldered to the motherboard.
- The upper display is glued in place and requires prying that can potentially break the display.