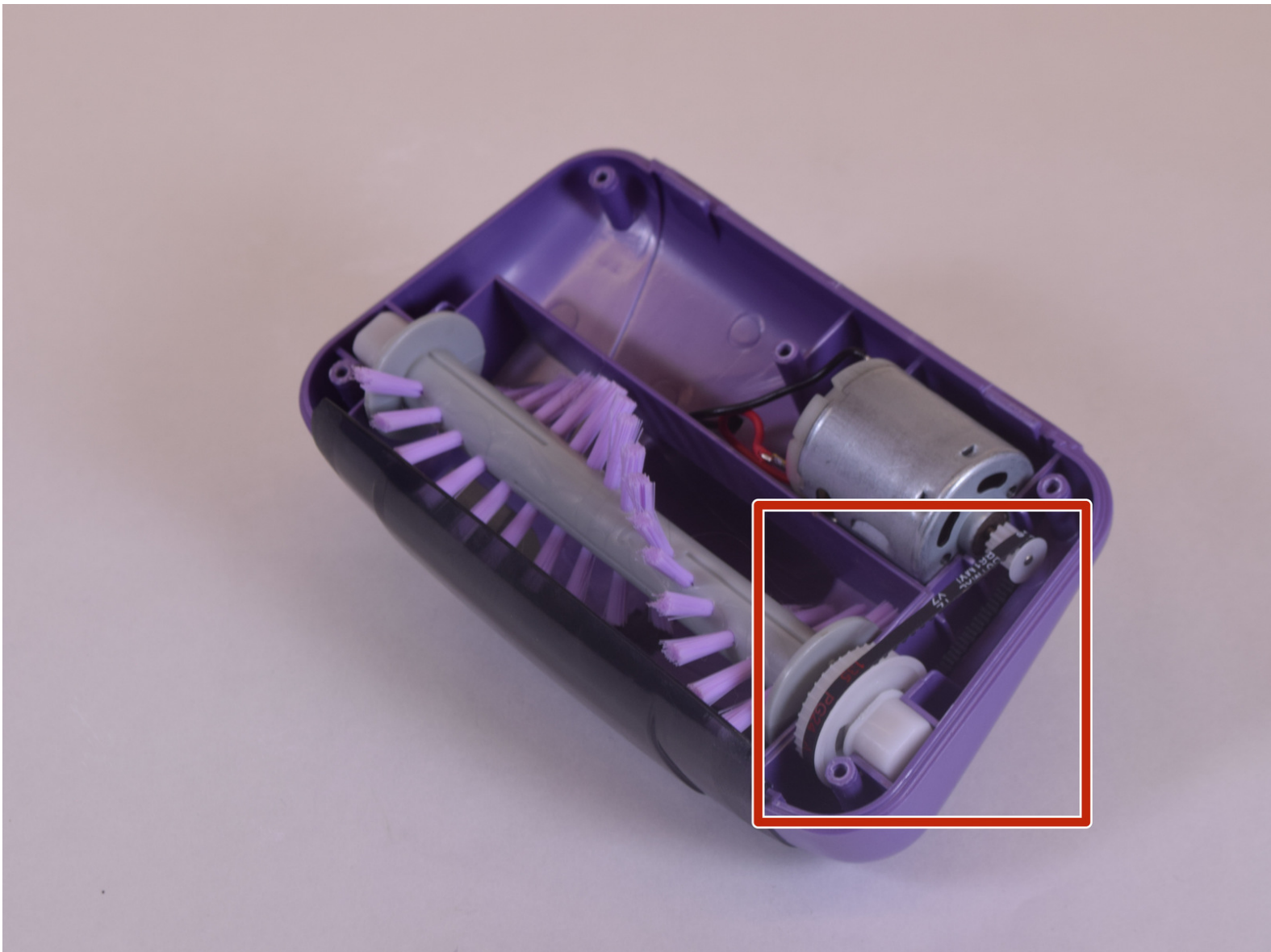




Shark Pet Perfect II Front Belt Replacement

Step by step guide on replacing the internal brush rotation belt.

Written By: Tanner Brown



INTRODUCTION

Step by step guide on replacing the internal brush rotation belt. After removing a few screws, you can access the internal components of the motorized brush. After removing the belt, you should exercise care in handling the belt.

TOOLS:

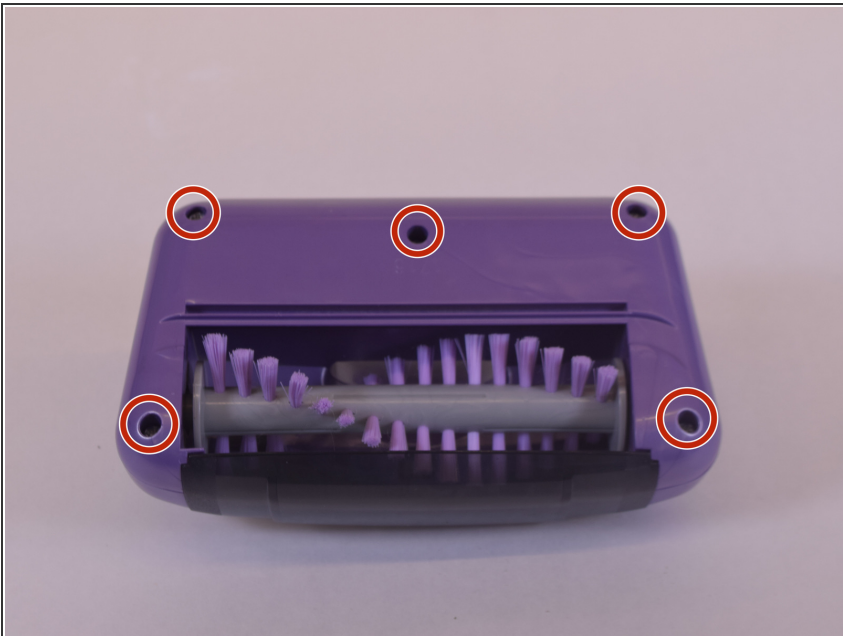
- [Phillips #1 Screwdriver](#) (1)
 - [iFixit Opening Tools](#) (1)
-

Step 1 — Front Belt



- Remove the motorized brush from the dust cup by pulling it apart.

Step 2



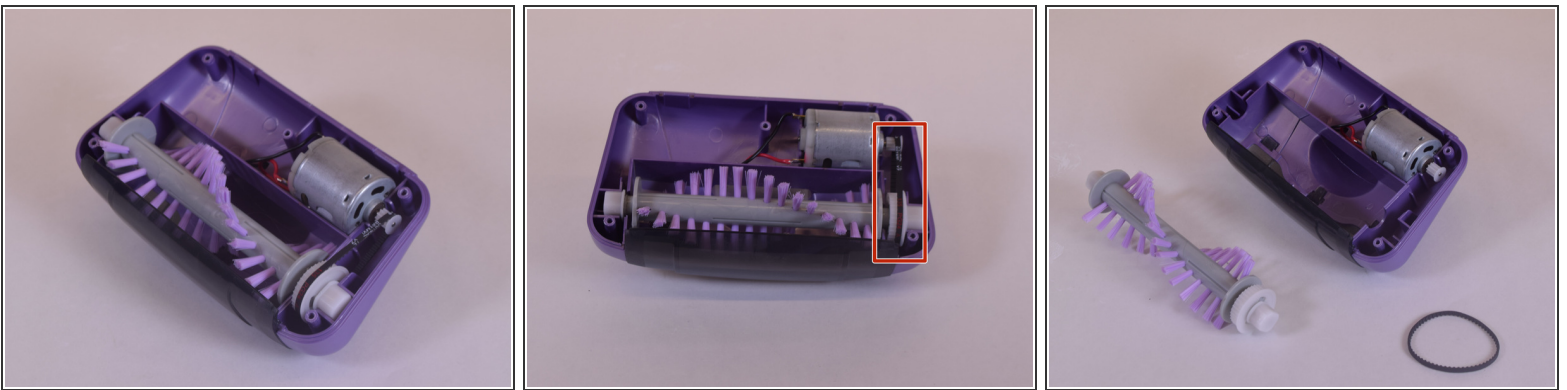
- Use a Phillips #1 screwdriver to remove the five 14mm screws from the face of the motorized brush.

Step 3



- Separate the motorized brush face plate by using a flat prying tool.

Step 4



- Remove the brush roller by lifting vertically away from the brush head. It should come out easily along with the belt.

- ⓘ Be careful in handling the belt. If stretched or damaged, the belt can cause the motorized brush to operate incorrectly.

To reassemble your device, follow these instructions in reverse order.