



Lenovo W600 Keyboard Teardown

Breaking the W600 Keyboard apart.

Written By: _ Lithane



INTRODUCTION

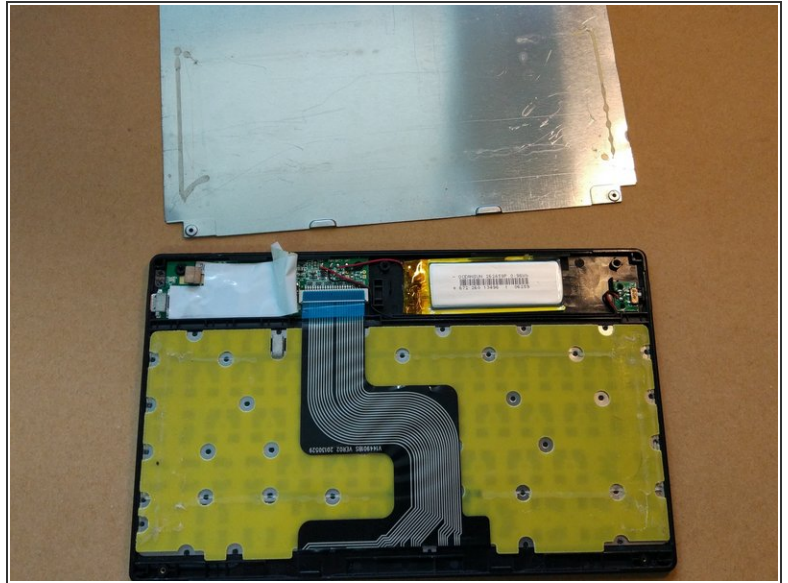
This guide will help you break the W600 keyboard down. **You will meet tons of glue in this process.**

Do not expect this will help you to repair the keys: they are mounted tightly onto the case and are unable to disassemble.

TOOLS:

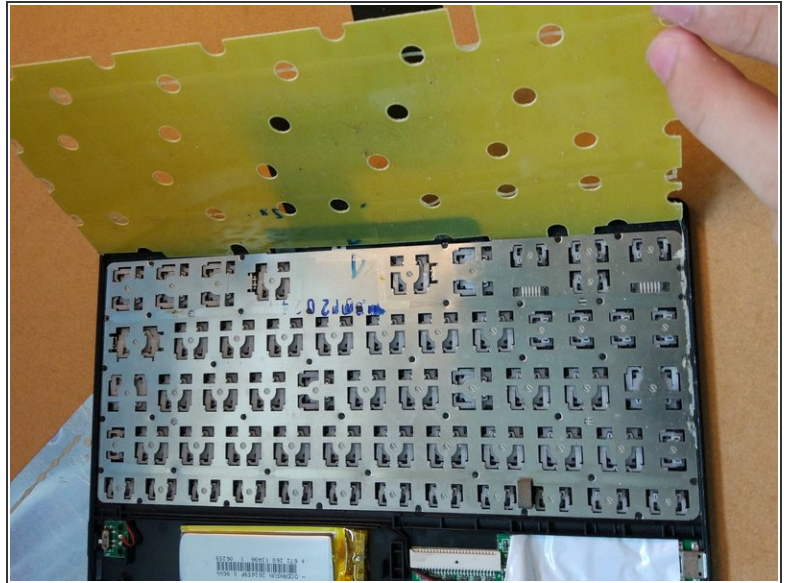
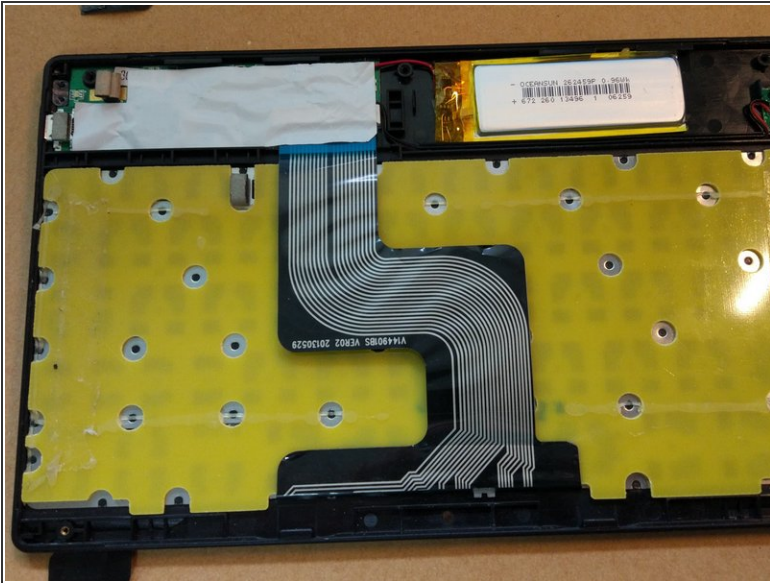
- [Essential Electronics Toolkit \(1\)](#)
-

Step 1 — Removing the backplate



- Take off the protective stickers on the four corners
- Use a Phillips screwdriver to remove all five screws on the keyboard
- Insert a word screwdriver into one corner and move around to break all the hot glue. You may need to use steel rulers to break the hot glue between the keys and the backplate.
- After struggling for a while you should be able to take the backplate off.

Step 2 — Removing the keys' backplate



- Unplug the FPC cable.
- Use the same method as removing the backplate to break the hot glue between the keys and their backplate.
- **No more teardown process is possible without breaking the case of the keyboard.**