



MacBook Pro 15" Retina Display Mid 2012

Battery Connector Replacement

Pre-req for unplugging the battery without removing it.

Written By: Brett Hartt



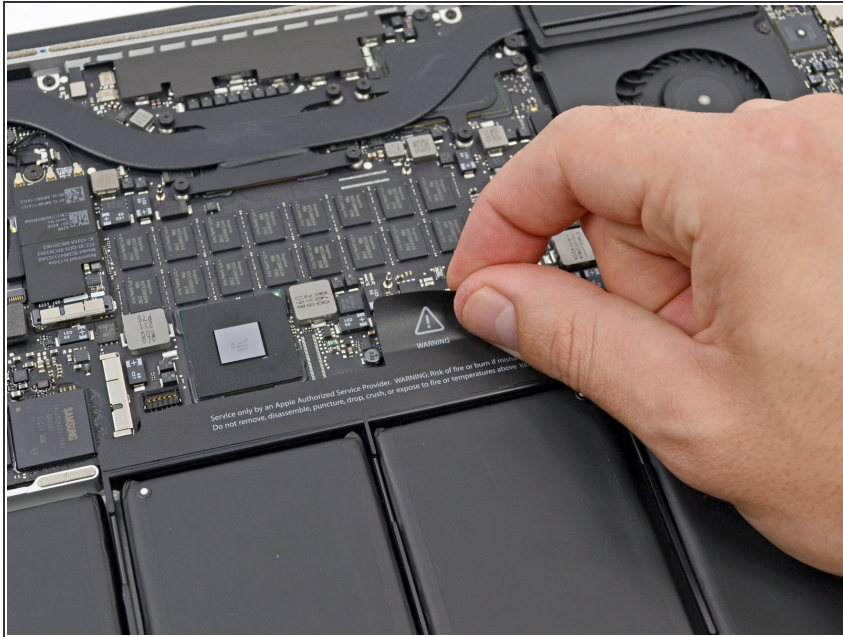
INTRODUCTION

Pre-req only

TOOLS:

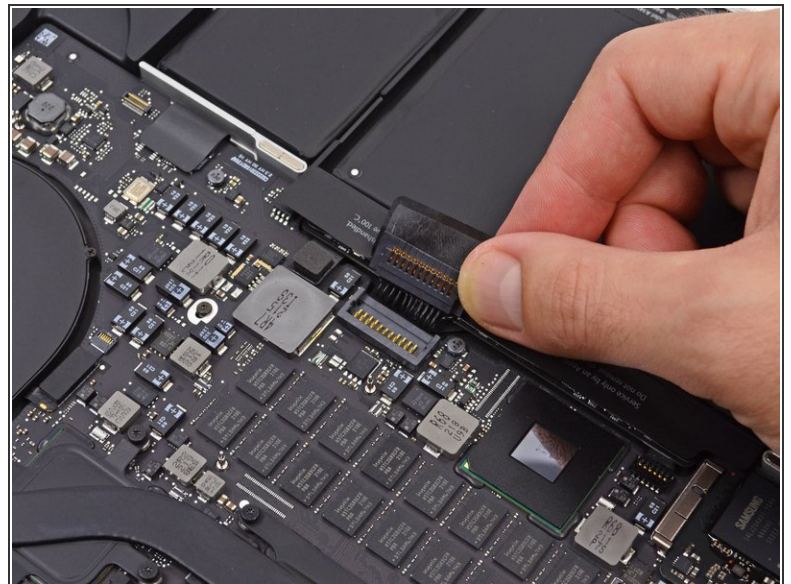
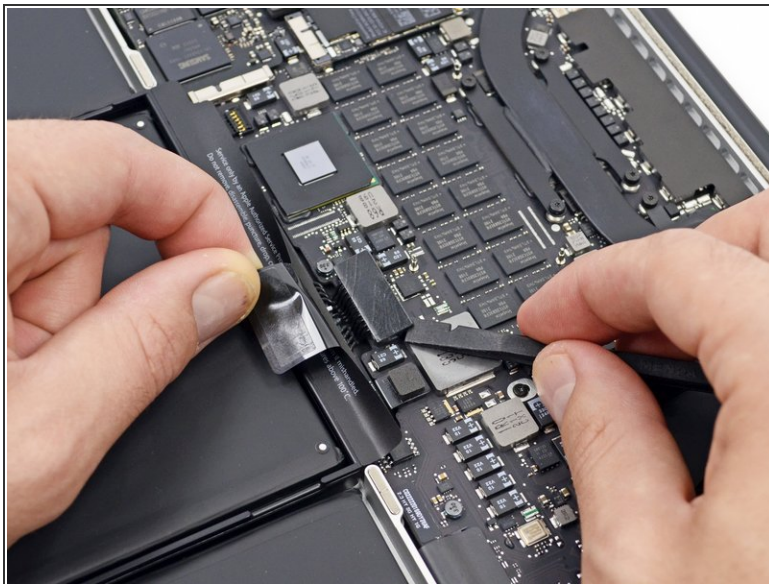
- [Spudger](#) (1)
-

Step 1 — Battery Connector



- Peel back the warning label covering the battery connector.

Step 2



- Using the flat end of a spudger, gently pry the battery connector straight up out of its socket on the logic board.
- Bend the battery cables back and out of the way, ensuring that the battery connector doesn't accidentally make contact with the logic board.

To reassemble your device, follow these instructions in reverse order.