



# why! N240BU Fan replacement

Written By: Felice Suglia



---

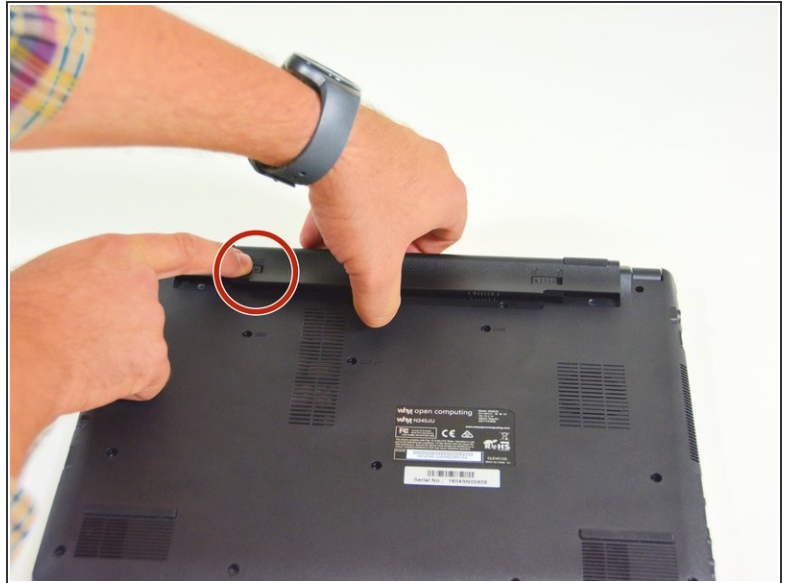
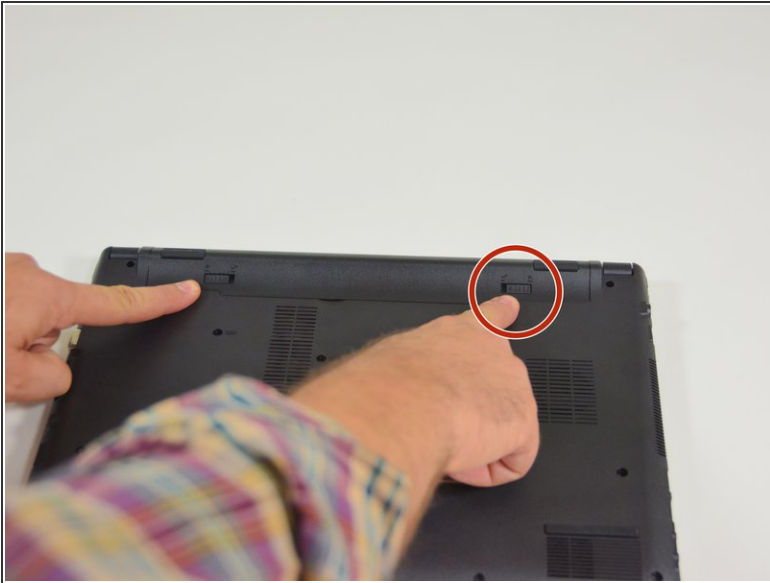
 **TOOLS:**

- [Phillips #0 Screwdriver](#) (1)

 **PARTS:**

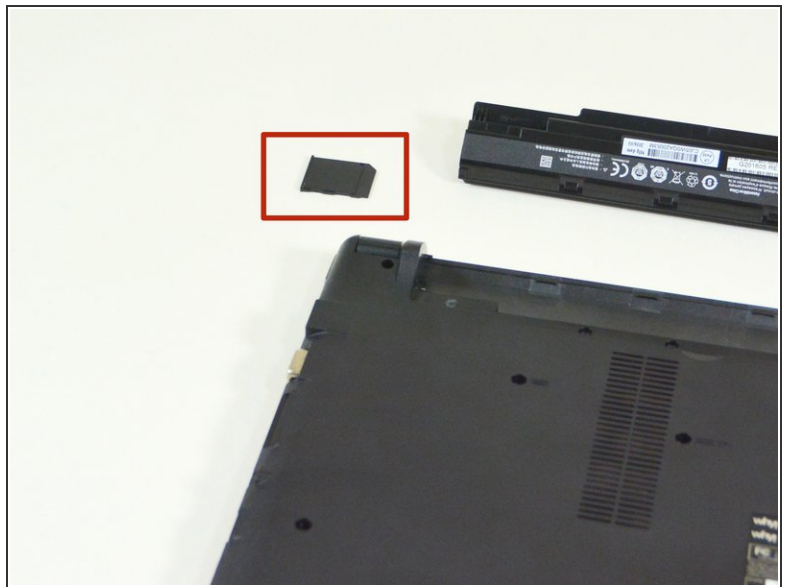
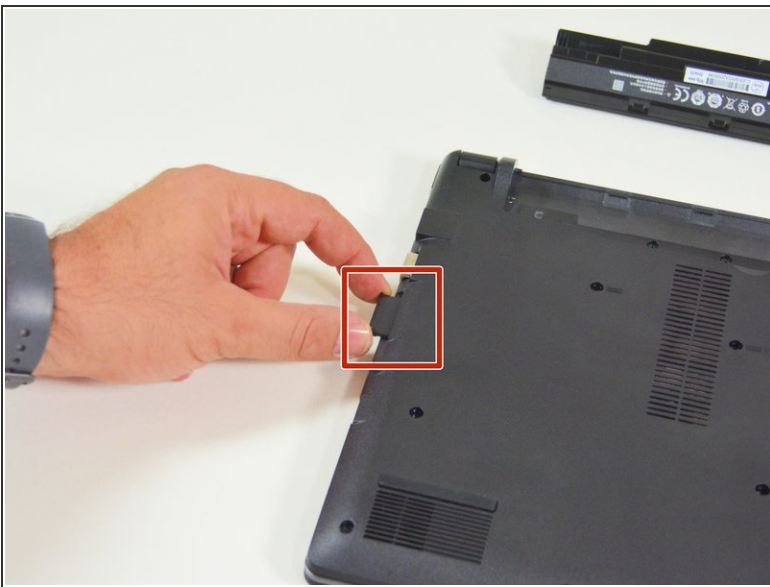
- [New Item](#) (1)
  - [New Item](#) (1)
  - [New Item](#) (1)
  - [New Item](#) (1)
  - [New Item](#) (1)
  - [New Item](#) (1)
-

## Step 1 — Battery



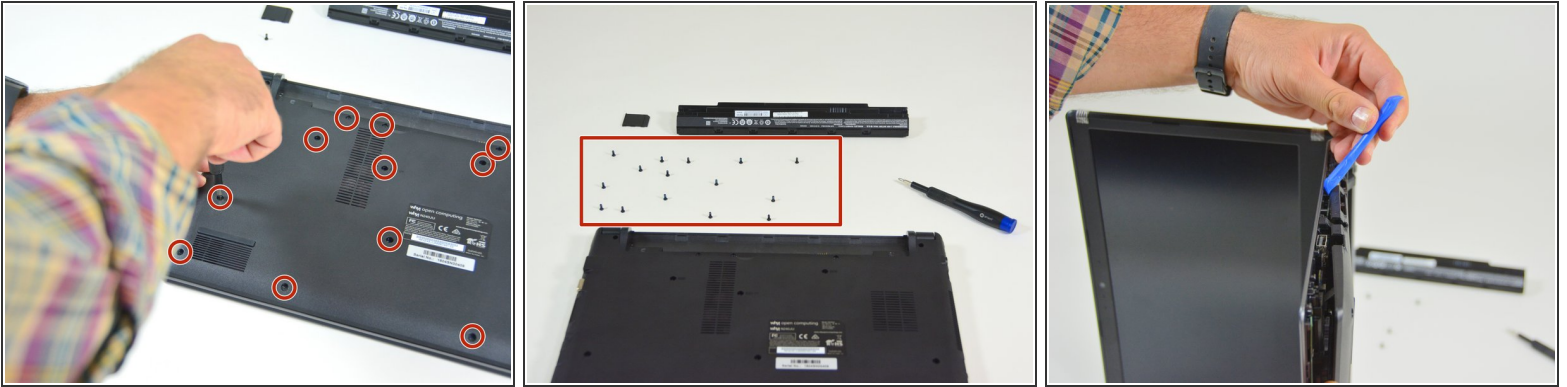
- Start by unlocking the right locking latch.
- Then, by simultaneously unlocking the left latch, lift the battery out of its socket.

## Step 2 — Access to main components



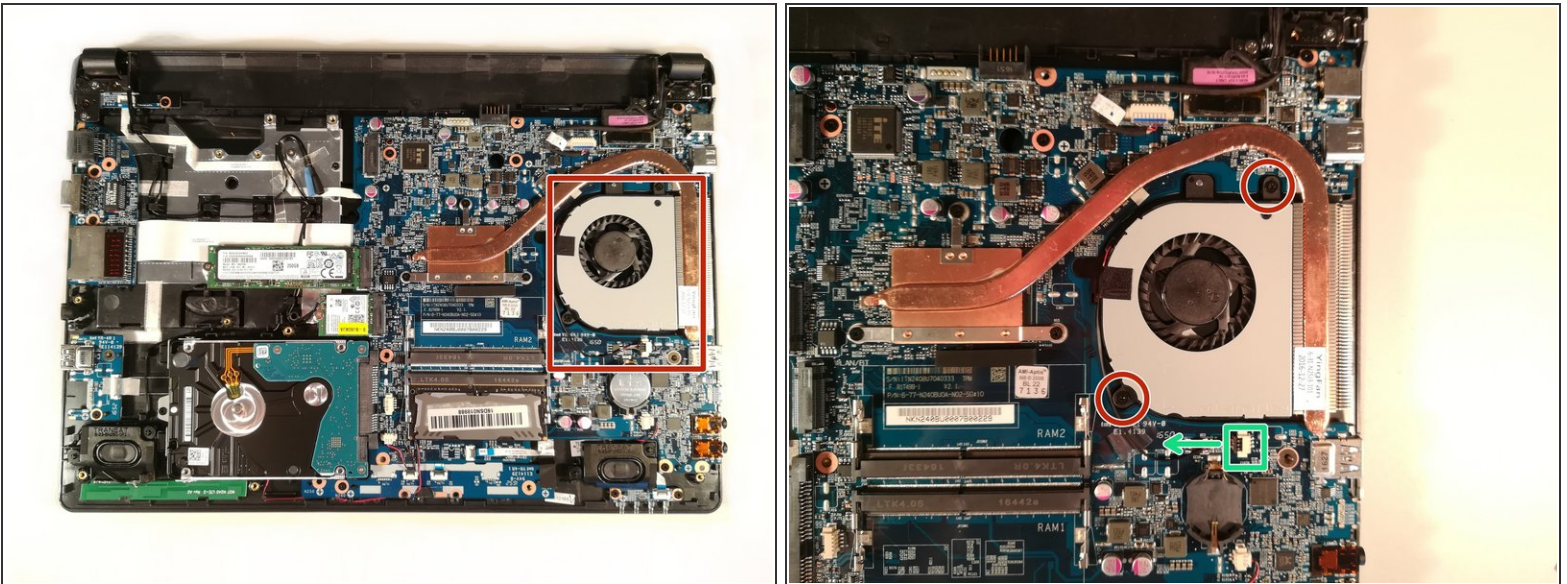
- Begin by spotting the dummy memory card.
- Then, remove it and put it on your workplan.

## Step 3



- Locate the 15 screws that hold the bottom cover of the device in place.
- Unscrew them and place them on your work surface.
- Then, un-clip the bottom cover, starting with the side shown in the third picture.

## Step 4 — Fan



- Remove the two screw circled in red
- Disconnect the connector boxed in green in the direction of the green arrow
- Remove the fan by lifting it up

To reassemble your device, follow the instructions in reverse order