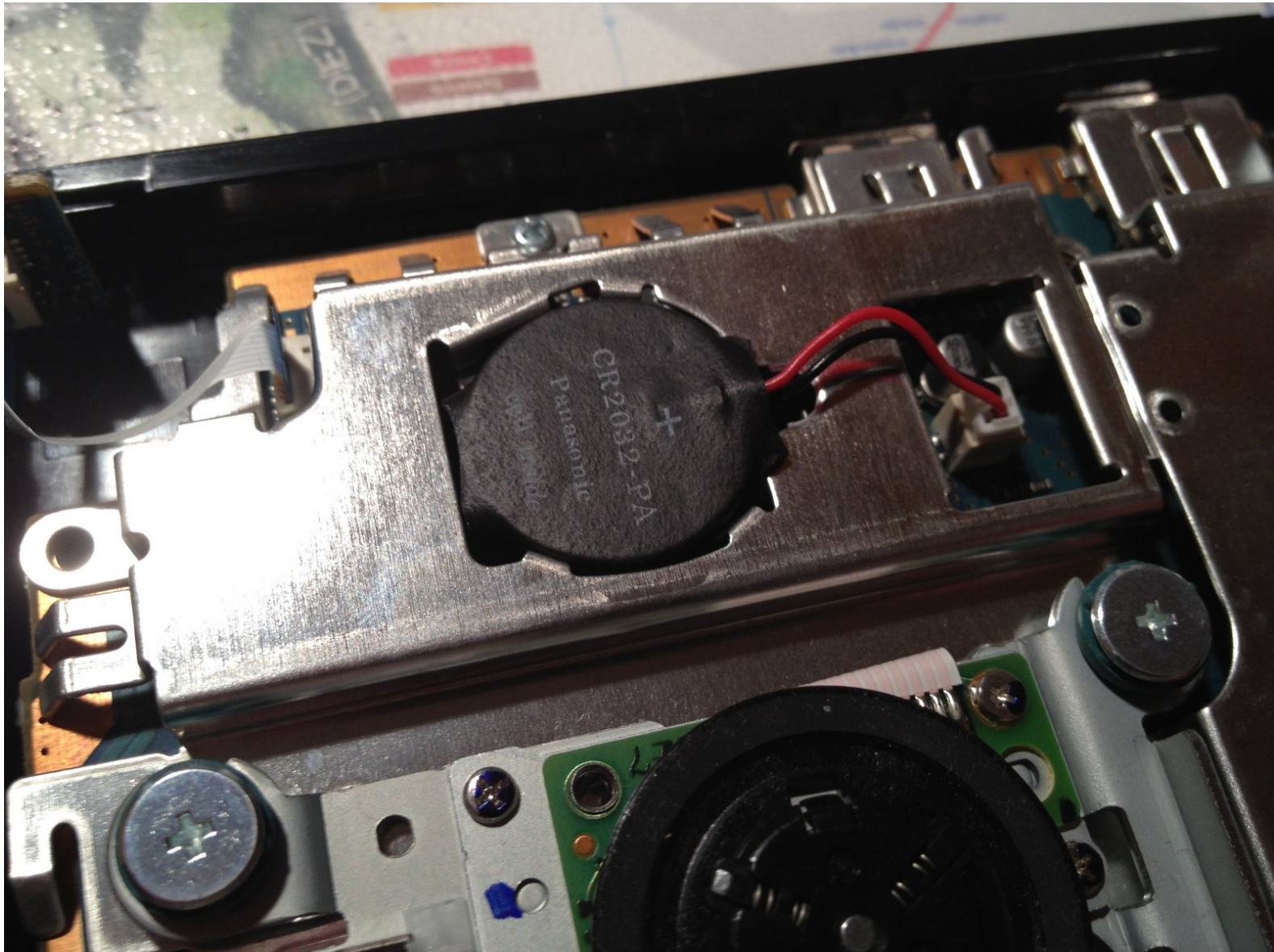




# PlayStation 2 Slimline CMOS Battery Replacement

How to replace the PS2 Slimline motherboard battery

Written By: tloesner



---

 **TOOLS:**

- [Metal Spudger](#) (1)
  - [Phillips #1 Screwdriver](#) (1)
-

## Step 1 — CMOS Battery



- Remove all five screws on the downside of the PS2 Slimline
- ⚠ Remove the "Do not void" seal carefully, underneath is the fifth screw located.

## Step 2



- ⓘ Make sure all screws are removed
- ⚠ Caution with the seal, do not forget.
- Then take a metal sponger and open the chassis

### Step 3



- i Locate the battery on the motherboard
- Use a metal spunger to peel it up
- Pull the cable and the battery is removed, ready to replace

To reassemble your device, follow these instructions in reverse order.