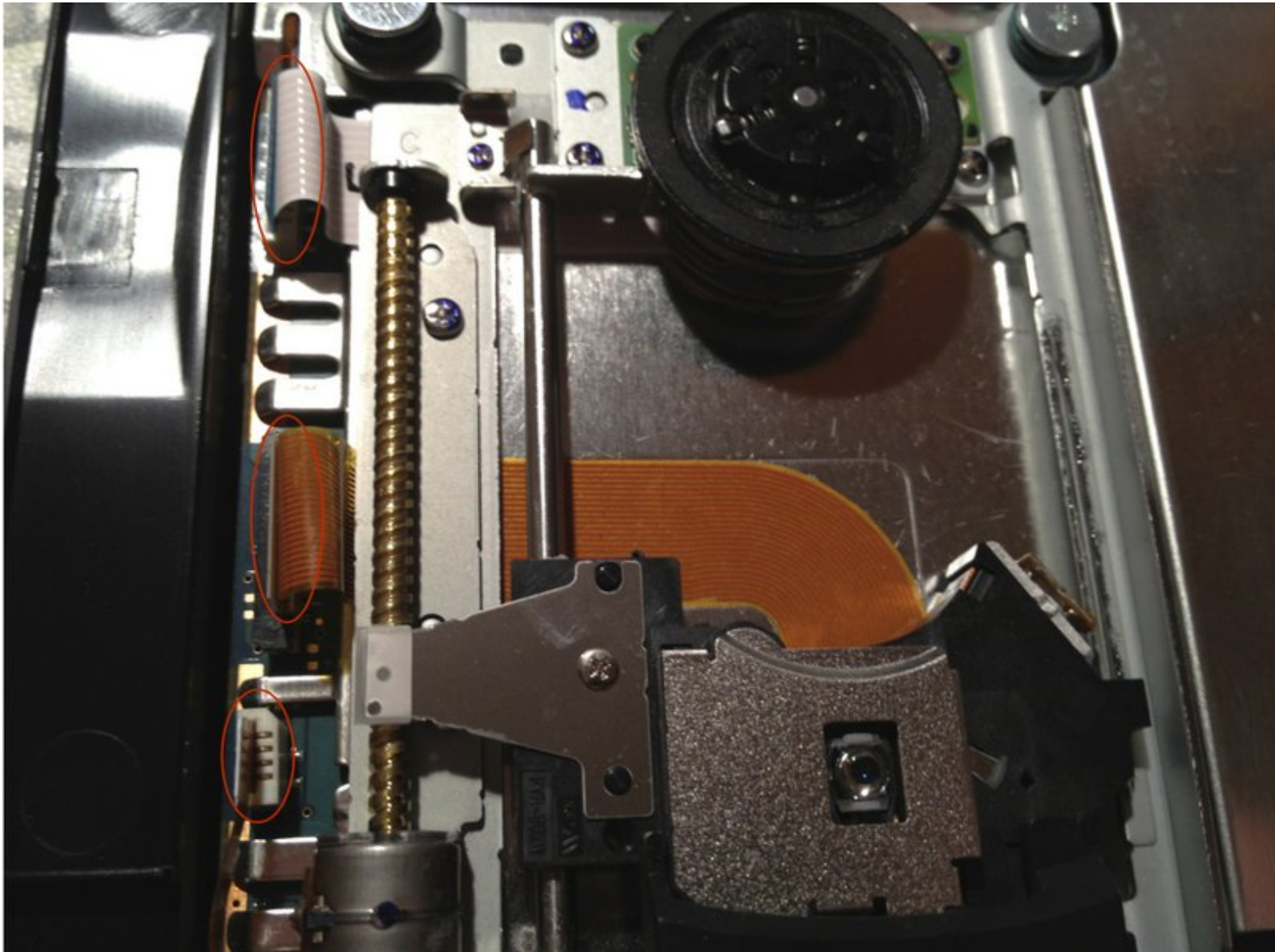




# PlayStation 2 Slimline Optical drive Replacement

How to replace the optical drive of the PlayStation 2 Slimline

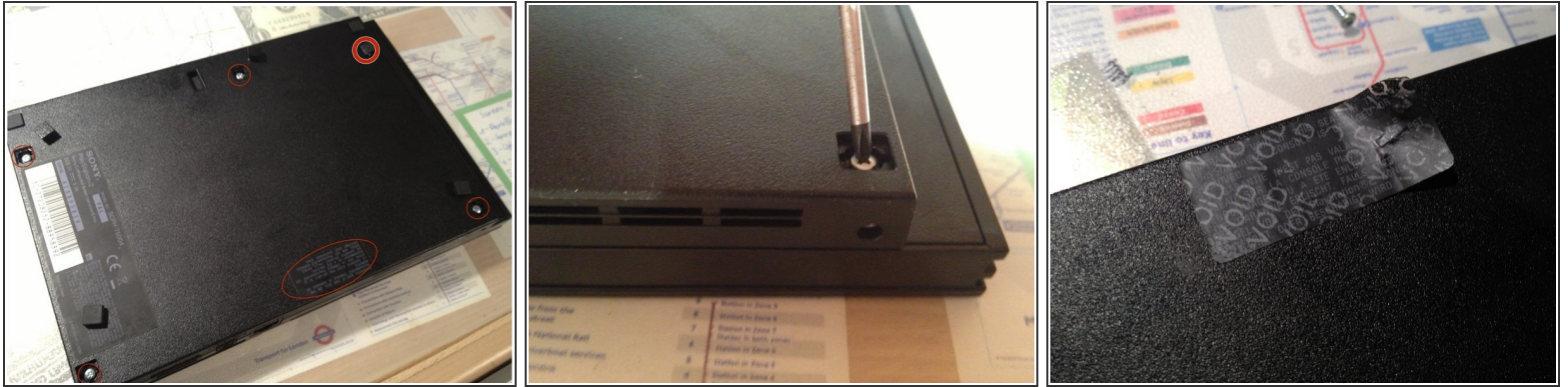
Written By: tloesner



 **TOOLS:**

- [Metal Spudger](#) (1)
  - [Phillips #00 Screwdriver](#) (1)
  - [Phillips #1 Screwdriver](#) (1)
-

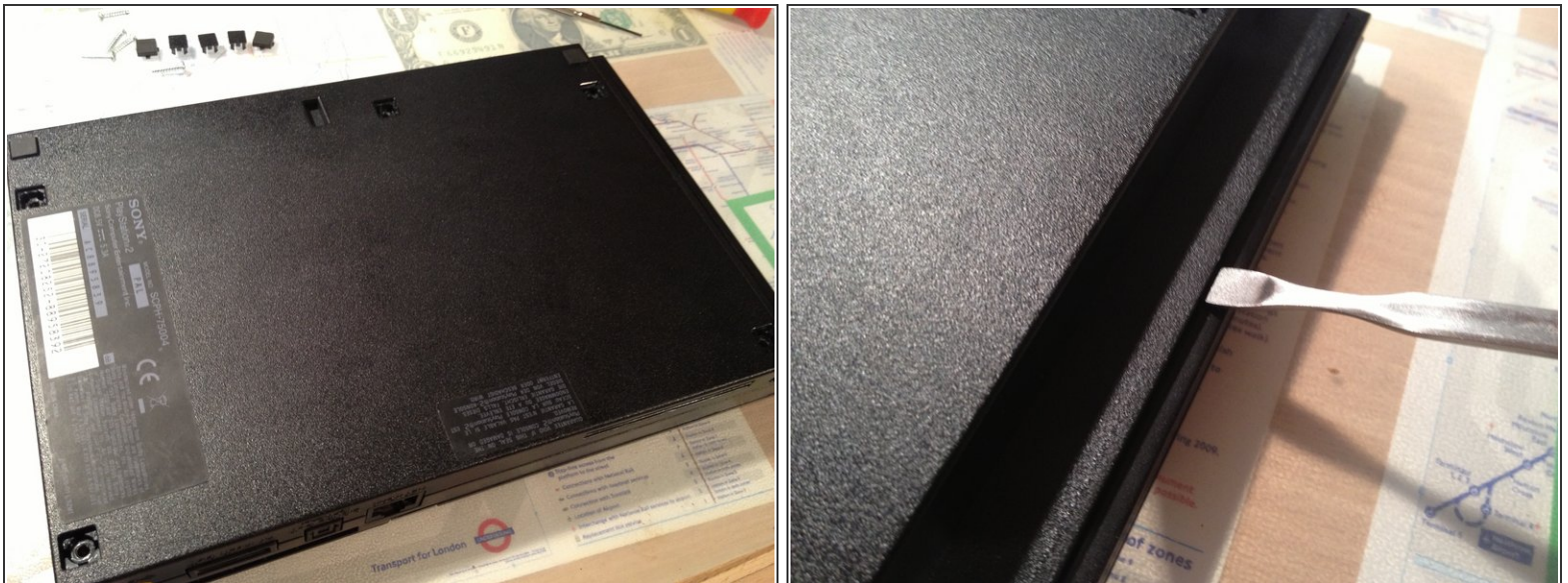
## Step 1 — Optical drive



- Remove screw covers, two are rubber feet, and the six screws located on the bottom of the console.

⚠ Caution with the "Do not void" seal, underneath is also a screw

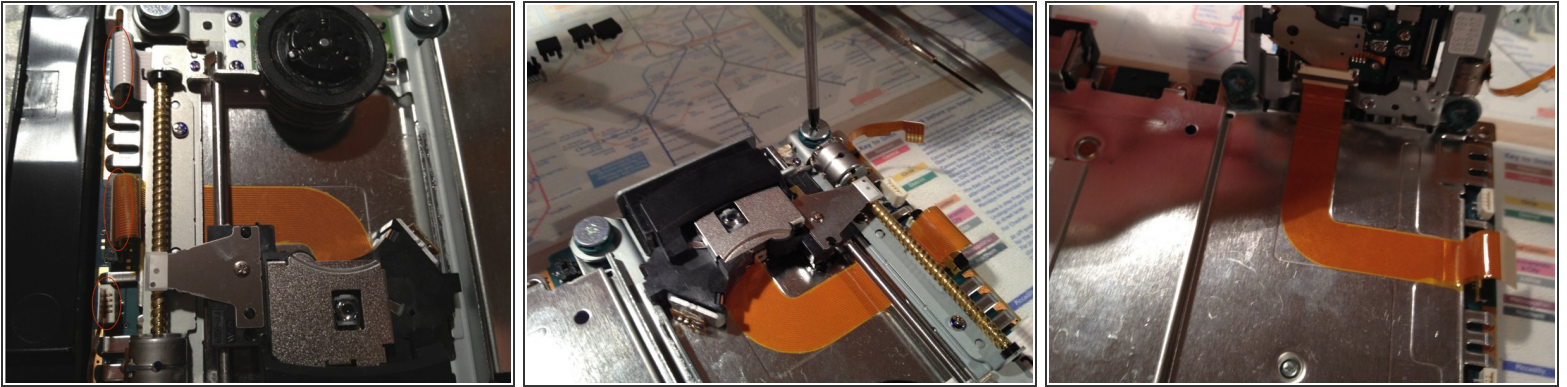
## Step 2



**i** If all screws are removed.

- Use a metal spunger to open the chassis

### Step 3



- Slip the three cables out of the sockets.
  - Use a PH01 screwdriver to remove the four screws securing the optical drive
  - Lift up the optical drive and remove the duct tape under the flex cable.
- i** Now the optical drive is free and ready for replacement

To reassemble your device, follow these instructions in reverse order.