



Huawei S10 Tablet USB Charge Port Replacement

How to replace the Micro USB Charger Port / Daughter Board.

Written By: Harvey



 **TOOLS:**

- [Phillips Screwdriver](#) (1)
 - [Torx Screwdriver](#) (1)
 - [Plastic Prying Tool](#) (1)
-

Step 1 — SIM & Micro SD Card removal



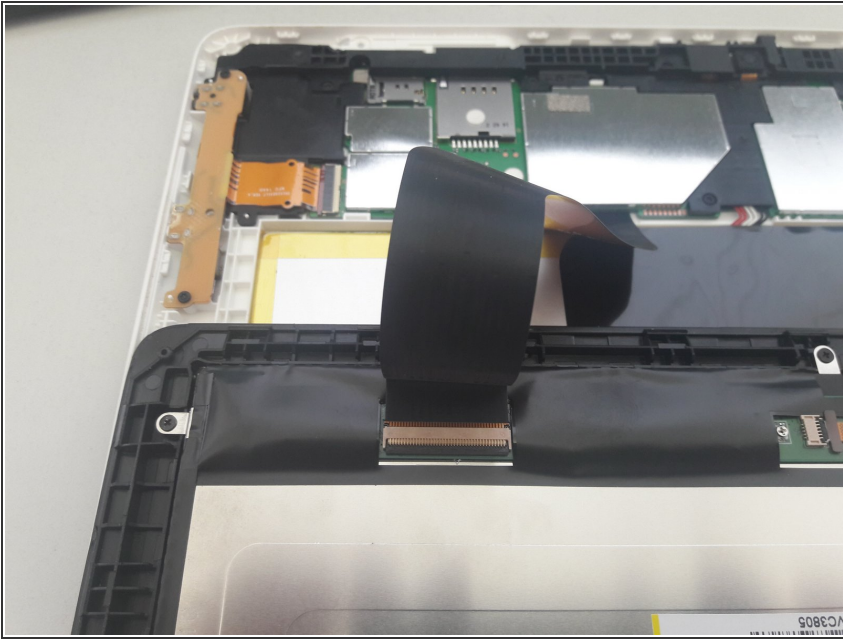
- Open the cover and press the SIM card and Micro SD card in to release them both.
- Remove the screw under the hinge cover.

Step 2 — Remove Back Cover



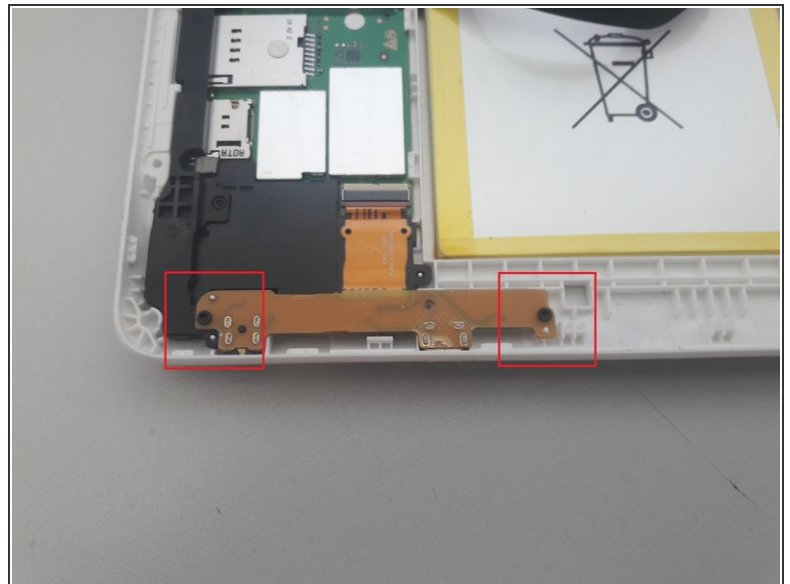
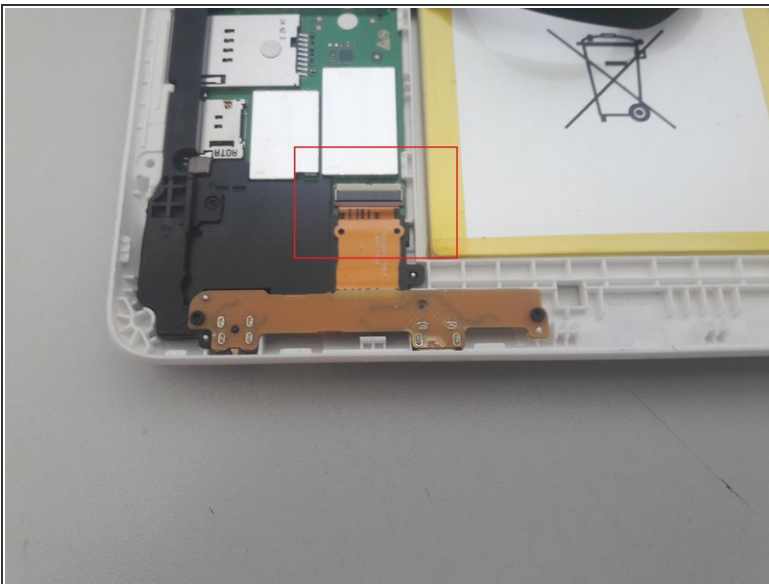
- Use a prying tool to loosen the back cover from the display.
- There are plastic clips holding the display and back cover together, but they come apart quite easily.

Step 3 — Remover Display Cable



- Carefully separate the display unit from the back cover, but not too far.
- There is a cable connecting the two together.
- Lift the ZIF Connector and remove the Display Cable.
- Lay the display to one side.

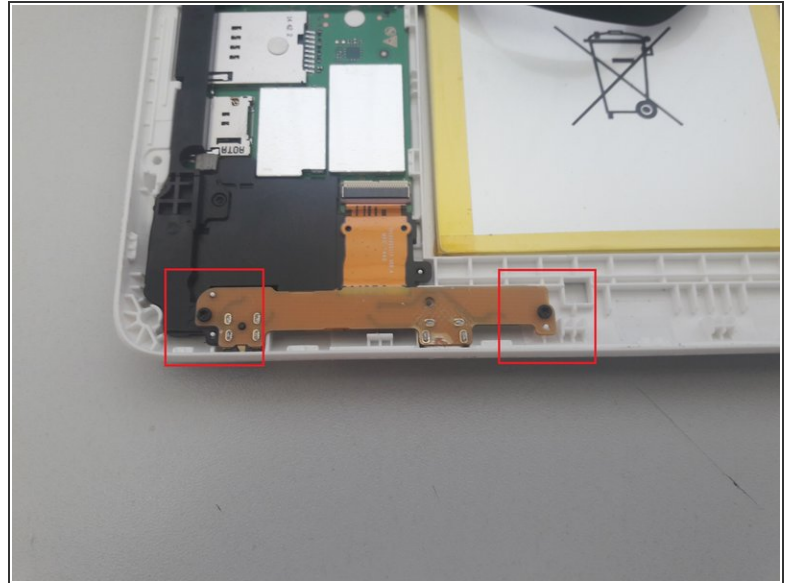
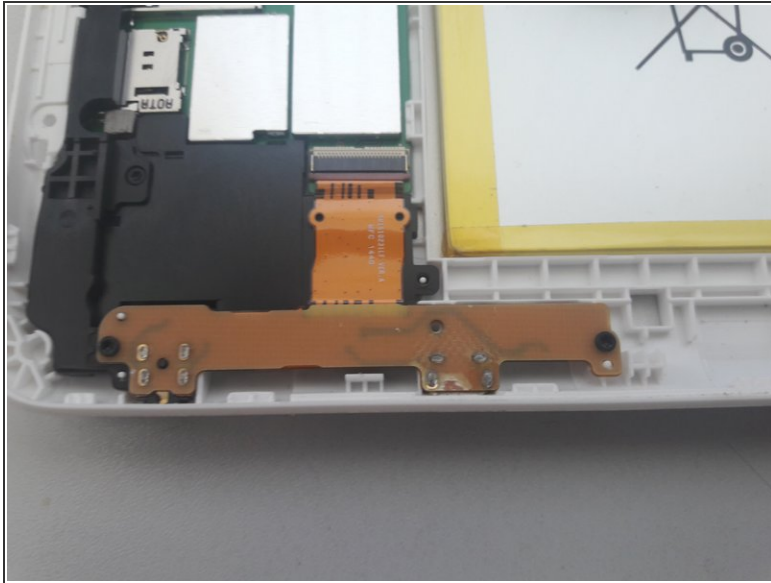
Step 4 — USB Charger Port Removal



- Flip the ZIF connector to loosen the flex cable for the USB charger port.
- It is possible the cable is glued down, sliding a flat tip underneath should be enough to loosen it for removal.
- Remove the two screws holding the charger port in place.

This document was generated on 2019-09-30 06:05:13 PM (MST).

Step 5 — Install New Charger Port



- Install the new charger port, Insert the cable in the ZIF connector and test to make sure it charges. Replace the screws for the USB Board
- Insert the display into the back cover.
- Replace the screw by the SIM card / Micro SD card slot.
- Completed!

To reassemble your device, follow these instructions in reverse order.