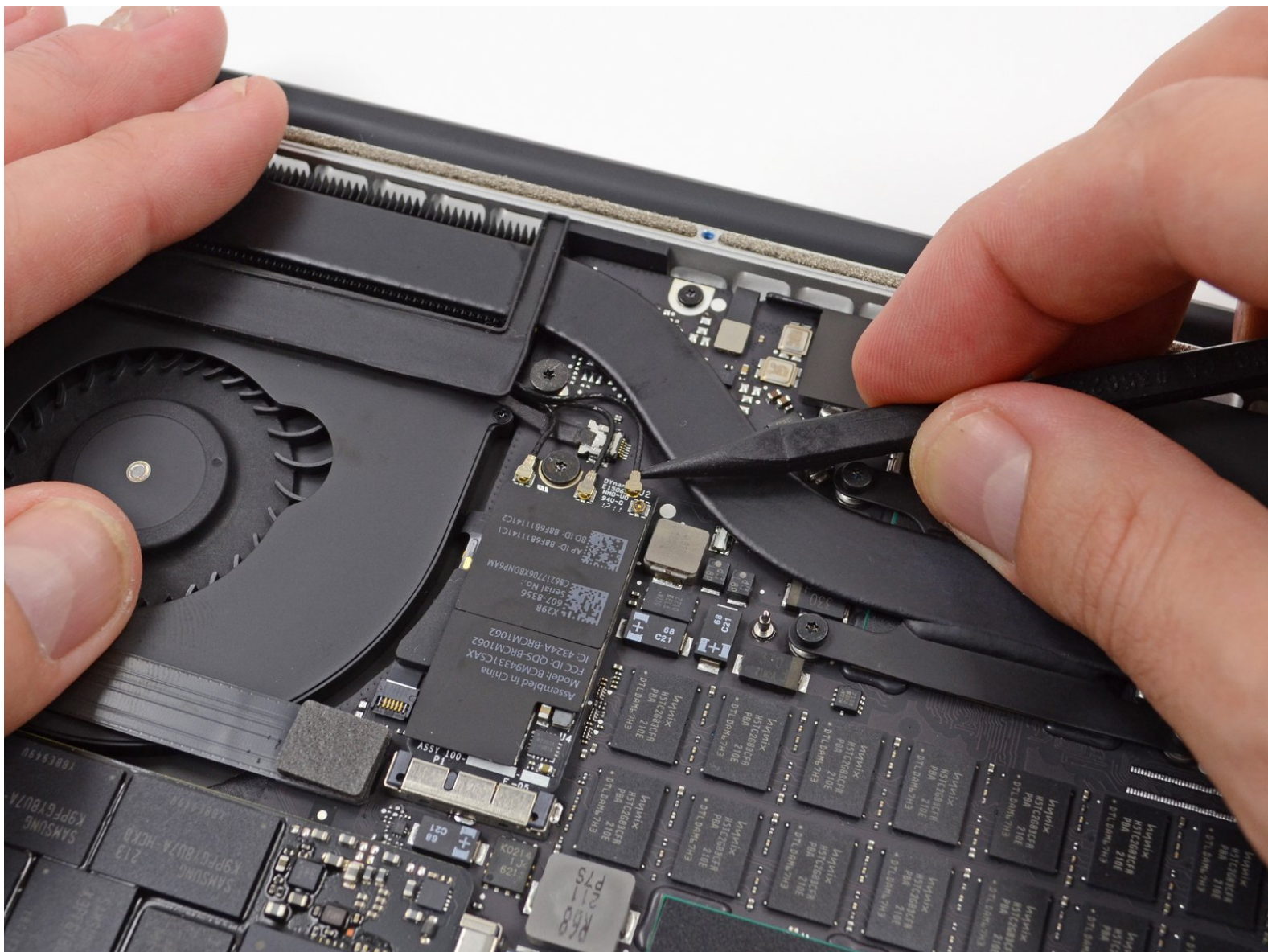




MacBook Pro 15" Retina Display Mid 2012 AirPort/Camera Cable Replacement

Written By: Brett Hartt



INTRODUCTION

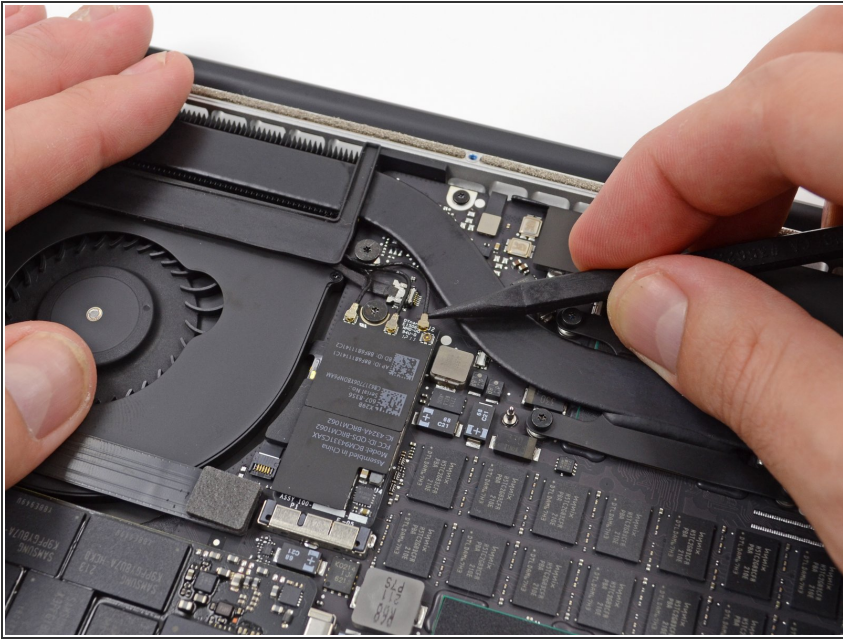
Prereq only.



TOOLS:

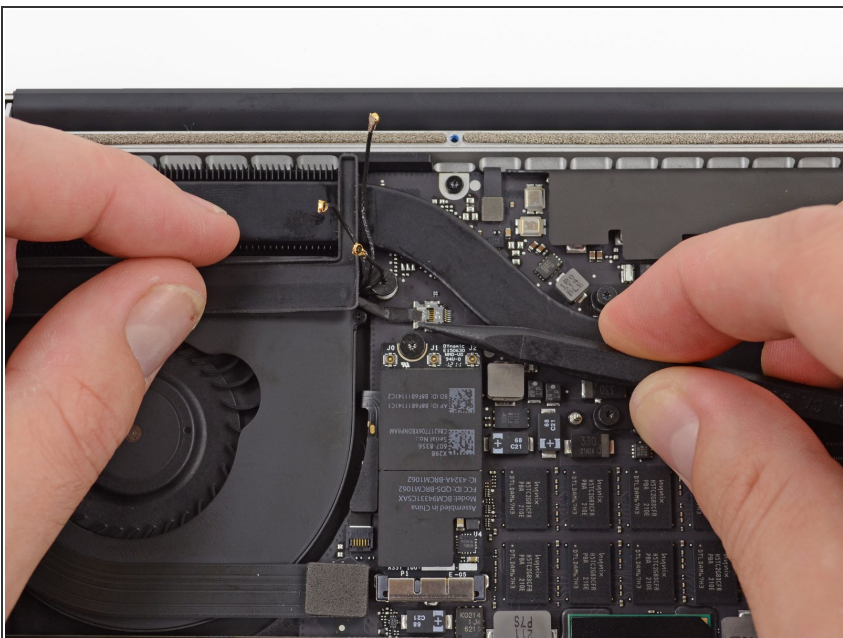
- [Spudger](#) (1)
-

Step 1 — AirPort/Camera Cable



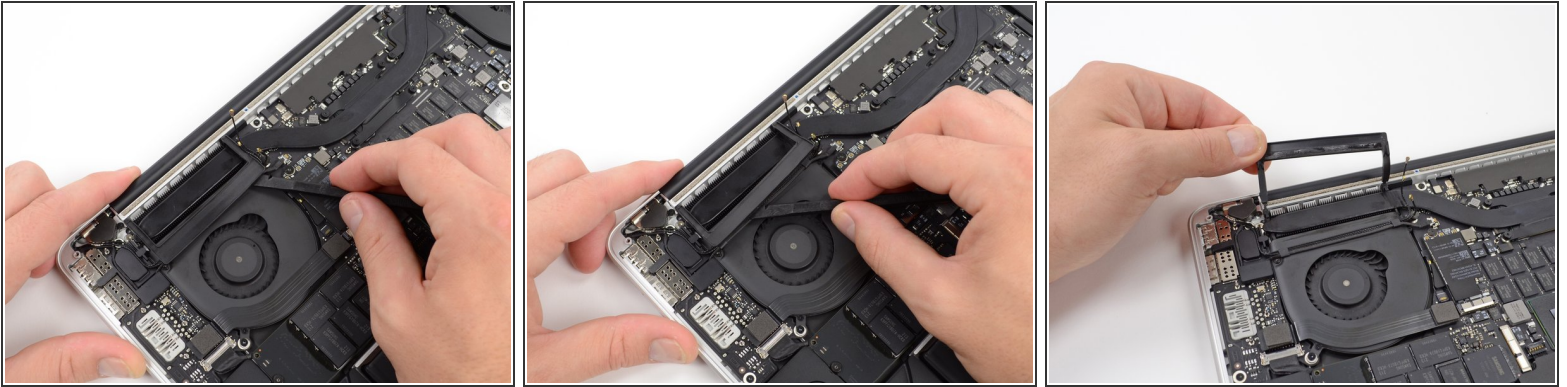
- Use a spudger or tweezers to pry the three AirPort antenna cables straight up off of their sockets on the AirPort board.
- ⚠ The cable connection points are fragile. Be careful to lift only on the connector, and not on the socket or cable.
- ➡ To reconnect, align the connector carefully into position over the socket, and press it down firmly with the flat of your spudger.

Step 2



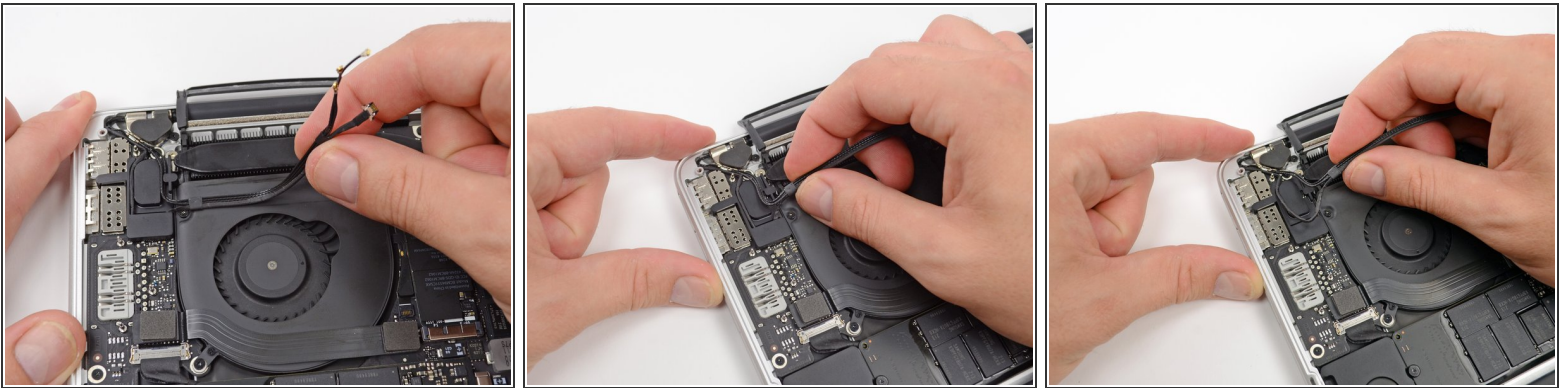
- Use the tip of a spudger to push the camera cable connector toward the fan and out of its socket on the logic board.
- ⚠ Be sure to push parallel to the board, first on one side, then the other, to slowly "walk" the connector out of its socket. Do not pry up, or you will damage the socket.

Step 3



- Insert the flat end of a spudger underneath the rubber heat sink cover on the right fan.
- Slide the spudger underneath the length of the cover, releasing the adhesive.
- Lift the cover and flip it back so that you can access the cables underneath.

Step 4



- Use your fingers to pull the AirPort/Camera cables up off the fan.
 - ⓘ The cables are adhered to the fan, so peel them up carefully to avoid damaging them.
- Carefully de-route the cables from the plastic cable guide.

To reassemble your device, follow these instructions in reverse order.

This document was last generated on 2019-05-31 06:04:20 PM.