



# Gaggenau HLED22 Temperature and Humidity Switch Replacement

If the switch has a loose connection, you may be able to reorder the replacement part at Gaggenau. The installation is very easy!

Written By: Johannes



 **TOOLS:**

- [Philips Head Screwdriver PH2](#) (1)
- [T20 Torx Screwdriver](#) (1)

*Eventuell auch den TR20, da ich den benutzt habe bin ich nicht mehr 100% sicher.*

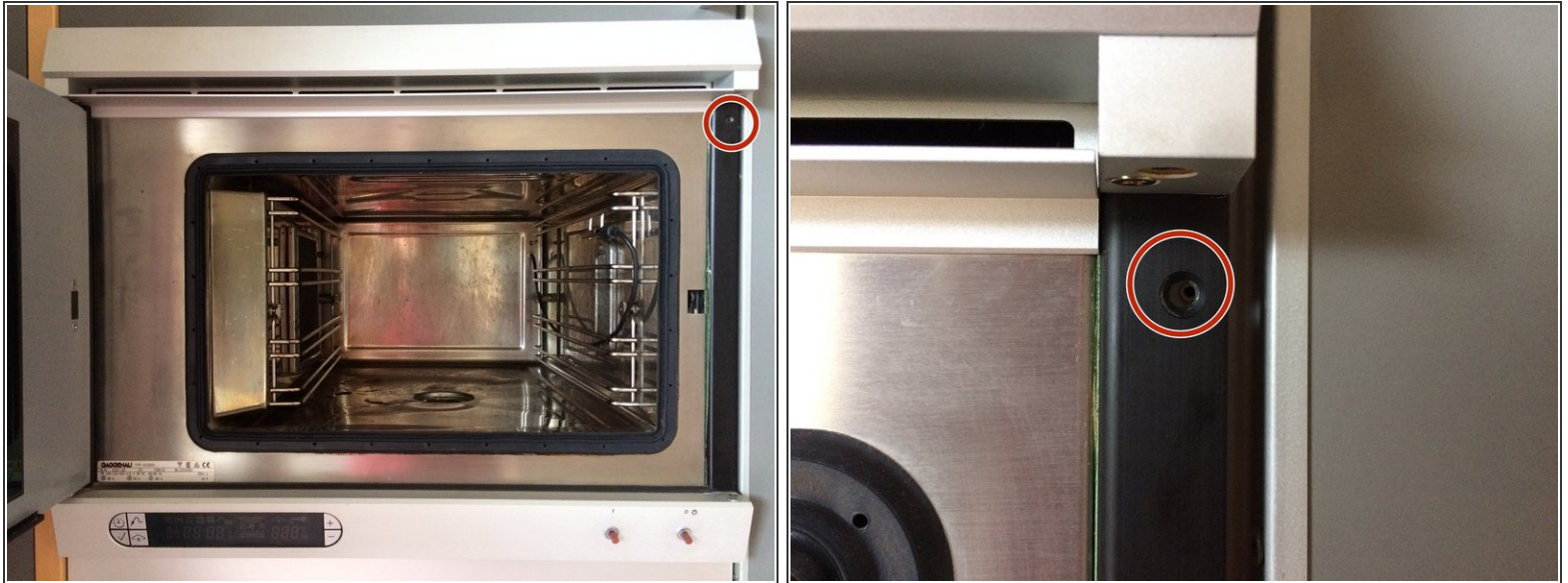
- [4mm Flathead Screwdriver](#) (1)

 **PARTS:**

- [New Item](#) (1)

*Das Ersatzteil ist auf der Gaggenau-Seite zu bestellen. Einfach die Typennummer und alle anderen Informationen im Türinneren übergeben.*

## Step 1 — Temperature and humidity switch



- Remove the Philips screw holding the steam oven to the cabinet.
- The removal of the screw requires a Philips PH2 screwdriver

## Step 2



- Pull the oven out of the cabinet by about 10-15cm (4" to 6" inches). Secure the door with some tape to the top of the oven.

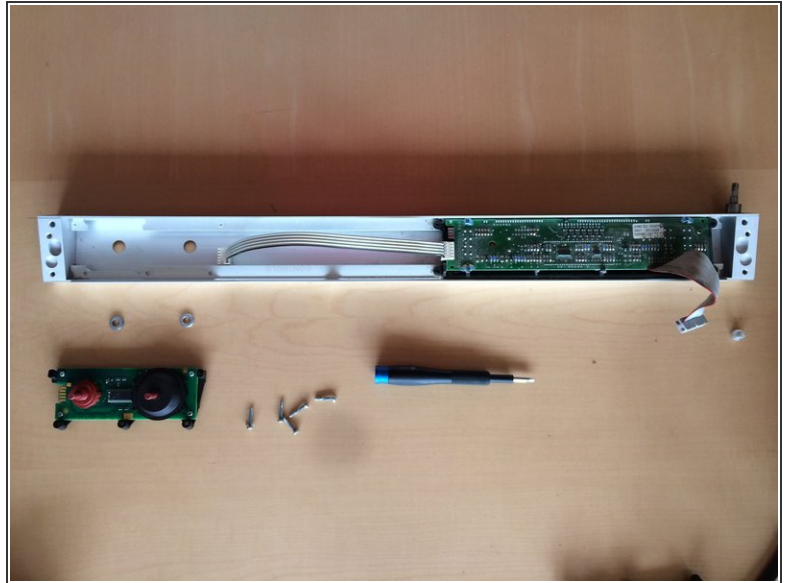
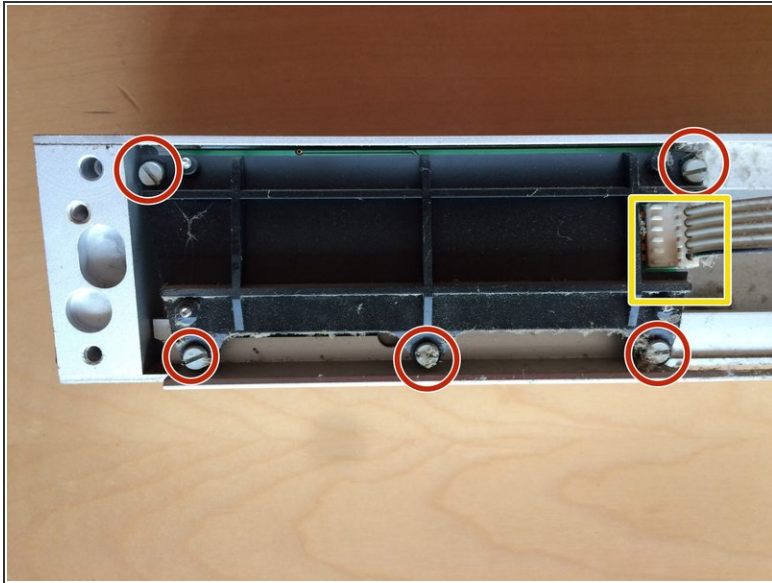
 This is important so as to prevent the door from falling out when removing the panel!

### Step 3



- The front control panel is held in place with 4 screws (TR20) on the back of the panel. Those can sometimes be tight. (Sorry, no pictures available). The screws can either be felt or seen, depending on how far the oven was pulled out of the cabinet.
- After removing the screws, hold the panel so that the 2 ribbon cables to the control unit do not break.
- Remove the wide cable where it connects to the oven and the thin cable at the control panel.
- On the door side is still a fixation, which can easily fall out!

## Step 4



- Disconnect the ribbon cable from the switch to the display. Remove the 5 screws holding the switch to the panel. Remove the switch.
- A cleaning is worthwhile afterwards!

Repeat the steps in order to reassemble your device.