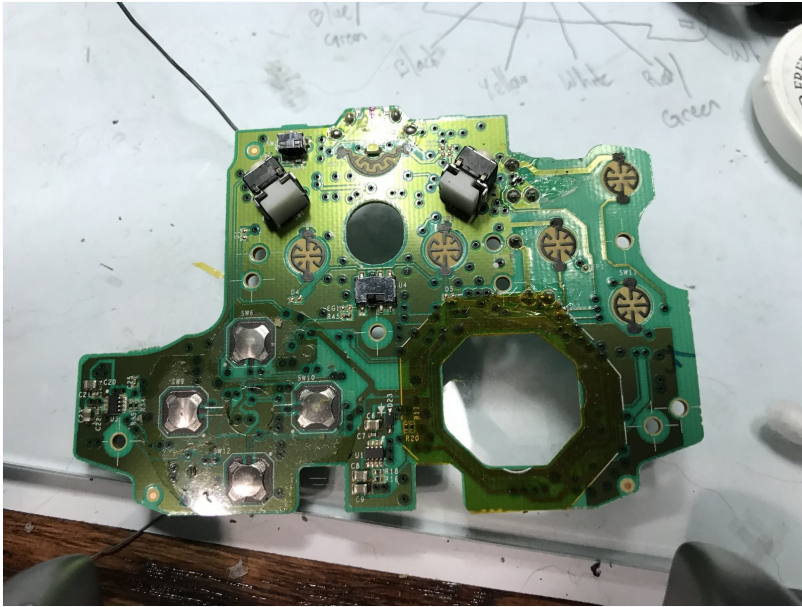




# Xbox One Elite Controller (Model 1698) Daughterboard Replacement

Written By: EasyAsABC123



## 🔧 TOOLS:

Soldering Iron (1)  
iFixit Opening Tool (1)  
T6 Torx Screwdriver (1)  
TR8 Torx Security Screwdriver (1)

## ⚙️ PARTS:

Xbox One Elite Controller (1698)  
Daughterboard (1)

### Step 1 — Show me the Screws!



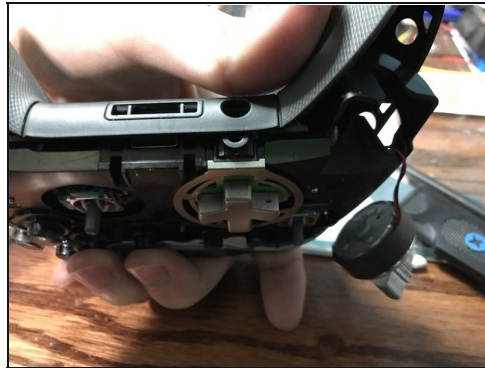
- You can remove the side panels with a pry tool.
- ① **You don't need to remove the rubber. The rubber on this controller was already bad.**

## Step 2 — Removing the back panel screws



- Remove the 5 Torx Security Bit (TR9) screws.

## Step 3 — Popping that back panel off

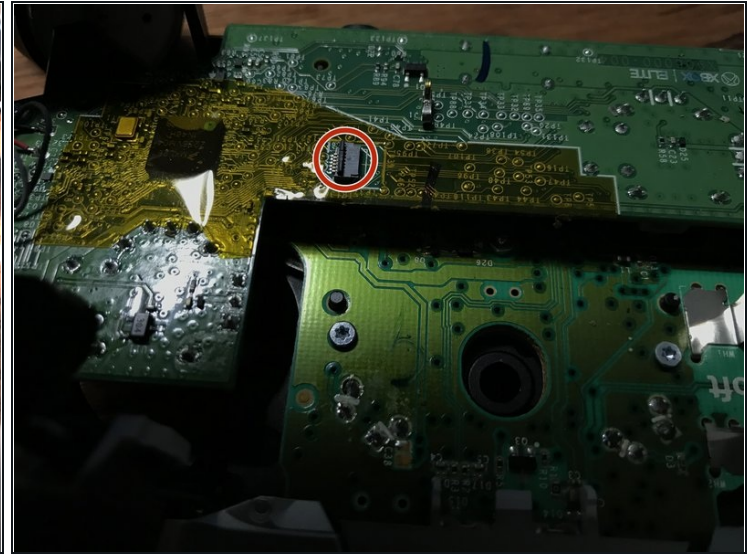
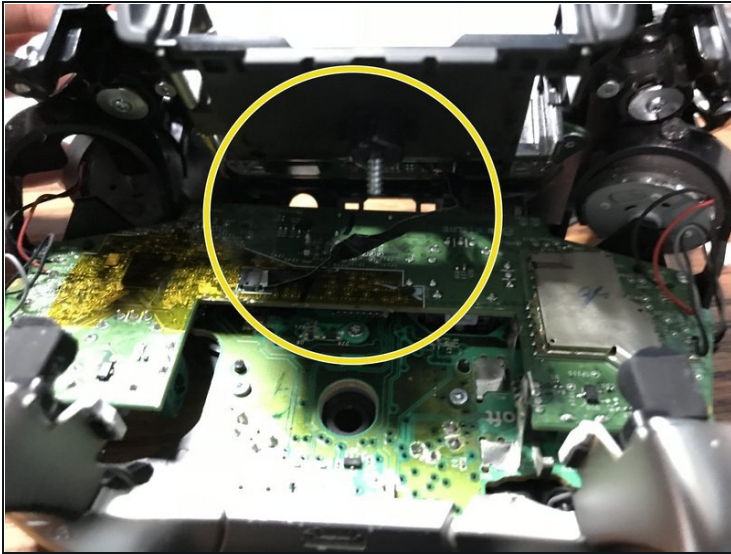


- Pry the panel next to the 3.5mm port.

⚠ Be careful to not rip the ribbon shown in the next step.



## Step 4 — Warning Carefully remove the ribbon



⚠ **Be careful to not rip the ribbon cable.**

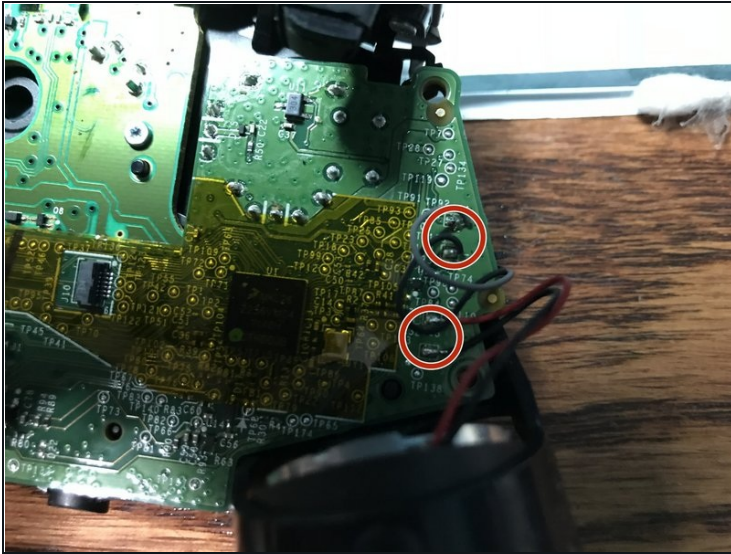
- You can pop the connector up to remove the ribbon easily.
- Ribbon Cable

## Step 5 — Screws on controller motherboard



- Remove the 2 Torx (T6) screws.

## Step 6 — Desolder wires from motherboard



- Desolder the 4 wires on each side, these control the vibrations and the RT LT.

## Step 7 — Remove the motherboard



- Pull up from the "top" side of the controller on the daughterboard.



## Step 8 — Remove the Home Button Cover



**⚠ Be Careful to not lose the sync button.**

- Pry the middle section up from the home button side.
- ① This will also remove the LB and RB which is a single part.

## Step 9 — Remove the controller daughterboard



- Unscrew the 6 Torx (T6) screws.

To reassemble your device, follow these instructions in reverse order.