



MacBook Pro 15" Retina Display Mid 2012 SSD Replacement

Pre-req for Logic Board removal. The fan is already removed.

Written By: Brett Hartt



INTRODUCTION

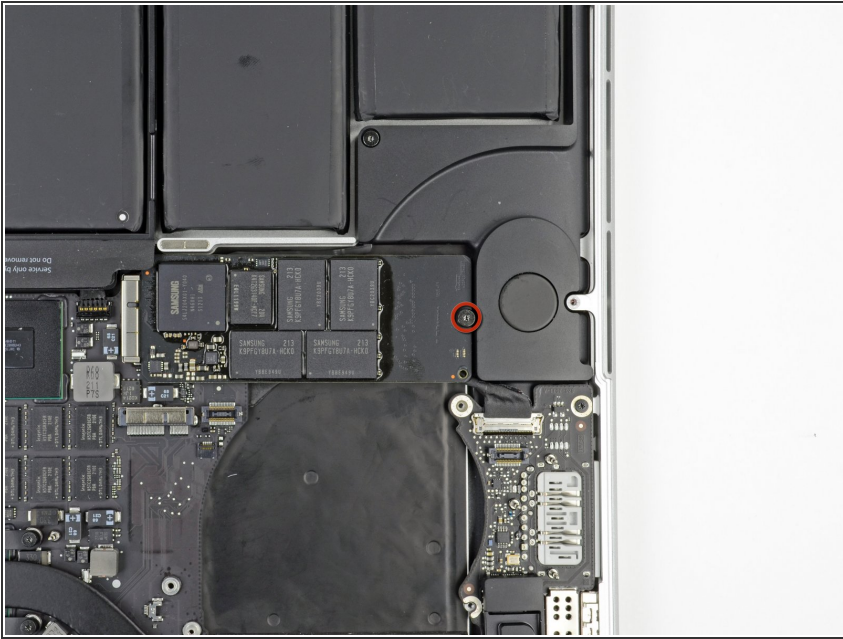
Pre-req only



TOOLS:

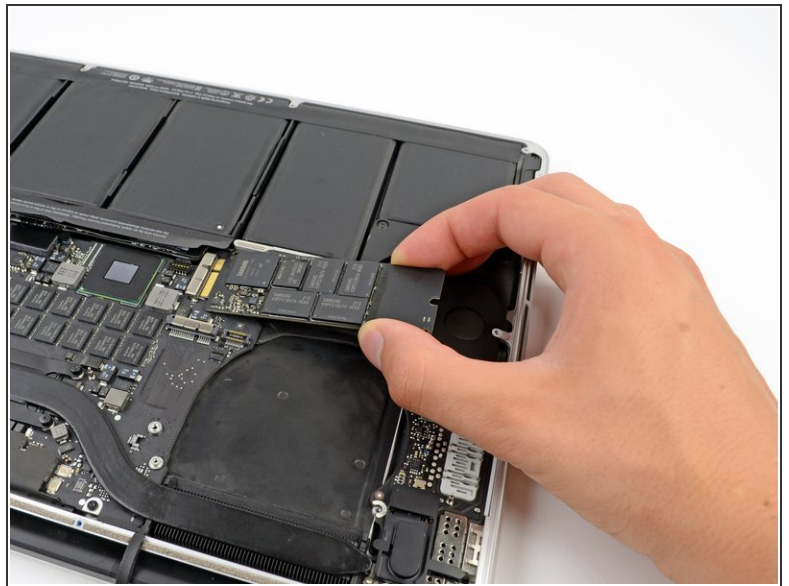
- [T5 Torx Screwdriver](#) (1)
-

Step 1 — SSD



- Remove the single 3.1 mm T5 Torx screw securing the SSD to the logic board.

Step 2



- Slightly lift the rightmost side of the SSD and firmly slide it straight away out of its socket on the logic board.

To reassemble your device, follow these instructions in reverse order.

This document was generated on 2020-11-28 02:36:21 AM (MST).

