



# PS Vita Slim Back Panel Replacement

How to remove the back panel of the PlayStation Vita Slim.

Written By: Daniel Woodard



---

## INTRODUCTION

Note::: taking apart your device may void the warranty on the device, please proceed with caution and consider having it sent in first if possible to be worked on by the company. A screwdriver would be required for this action. So far we have been using the J00 head in the ifixit kit. Be careful when completing this action as you should have the entire back cover ready to be pulled off before attempting to do so. Having just the bottom or the top pulled up is not enough to get a safe removal, as there is some ribbons that may be damaged if pulled off wrong.

---

### TOOLS:

- [JIS #00 Screwdriver](#) (1)
  - [iFixit Opening Tools](#) (1)
-

## Step 1 — Back Panel

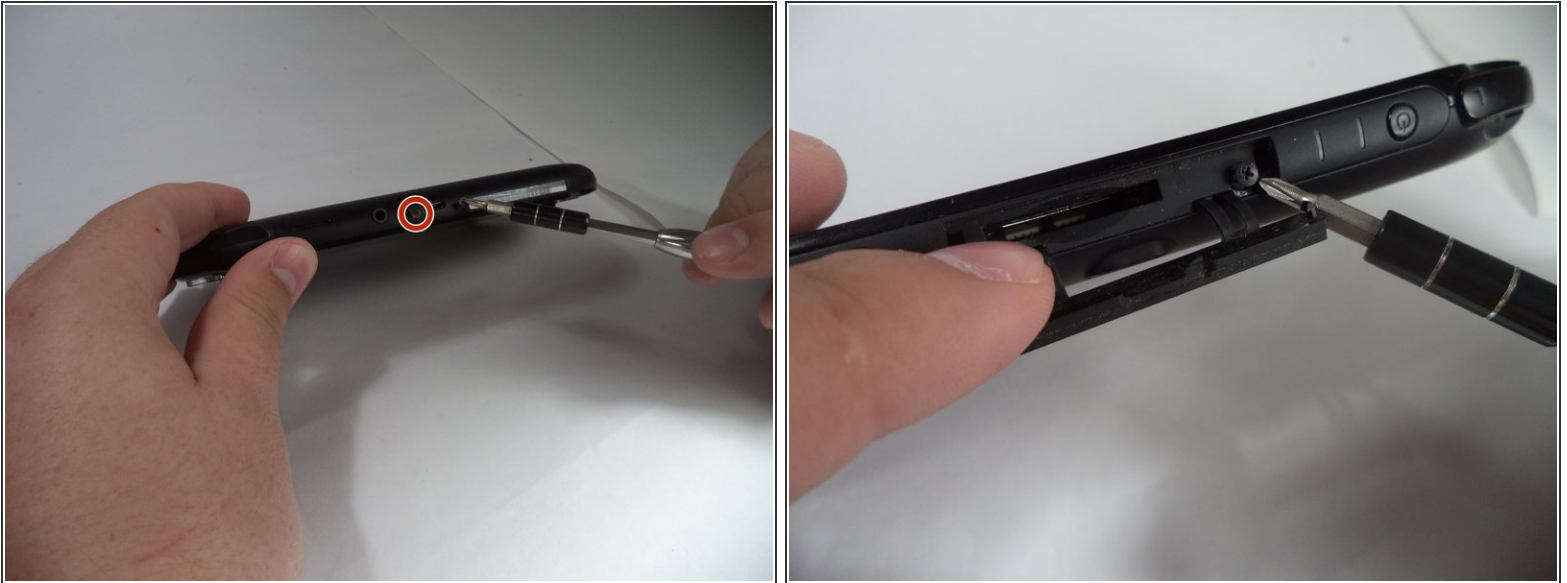


**⚠** Taking apart your device may void the warranty on the device, please proceed with caution and consider having it sent in first if possible to be worked on by the company.

**i** Please make sure the system is completely powered off and all SD storage cards are removed before starting the removal process

- All 6.35mm screws were removed using a J00 bit from the iFixit pro toolkit.
- There are four screws on the back of the device, remove them as shown.

## Step 2



- There are two screws on the bottom, near the charging port, remove them using the J00 screwdriver on the 6.35mm screws from the iFixit pro toolkit.
- Finally, remove the top screw under the dust cover using the J00 screwdriver on the 6.35mm screws from the iFixit pro toolkit.

## Step 3



**i** The next step will require the opening tool.

**!** Please carefully separate the back from the front completely. You will need to disconnect the small ribbon cable on the inside before completely removing the back. Otherwise you may end up hurting the ribbons on the inside.

**i** While separating the back, carefully pry all the way around the back. You will hear popping noises while going around and this is a good sign.

- Upon removing the back panel you will need to slowly and carefully remove the ribbons connecting the hardware to access the needed parts to be repaired.

## Step 4



- Once the ribbons have been removed, then the back is fully removed and you can access the hardware within.

To reassemble your device, follow these instructions in reverse order.