



# Miele Novotronic T454 Door Lock Replacement

Replace the door lock (or bulb) of a Miele Novotronic T454. Find the hidden spec and wiring diagram!

Written By: Josh Watson



## INTRODUCTION

Open up the Miele Novotronic T454 front loading drier and replace the door lock. This guide also shows you how to access the bulb, control circuits and circuit diagrams

### TOOLS:

- [Phillips #2 Screwdriver](#) (1)

### PARTS:

- [Miele 2034545 \(a.k.a. 04217311\) Door Lock](#) (1)

## Step 1 — Release the front of the drier



- First open the door of your drier.
- Remove the 5 screws ringed in red and blue. Keep them separate and arranged to go back into place; on my machine the screw ringed in blue was longer.
- If you know the lock is broken, you should also loosen the screws ringed in yellow. If you remove them completely the lock may jam against the edge of the drier when opening.
- You do not need to take the door off.

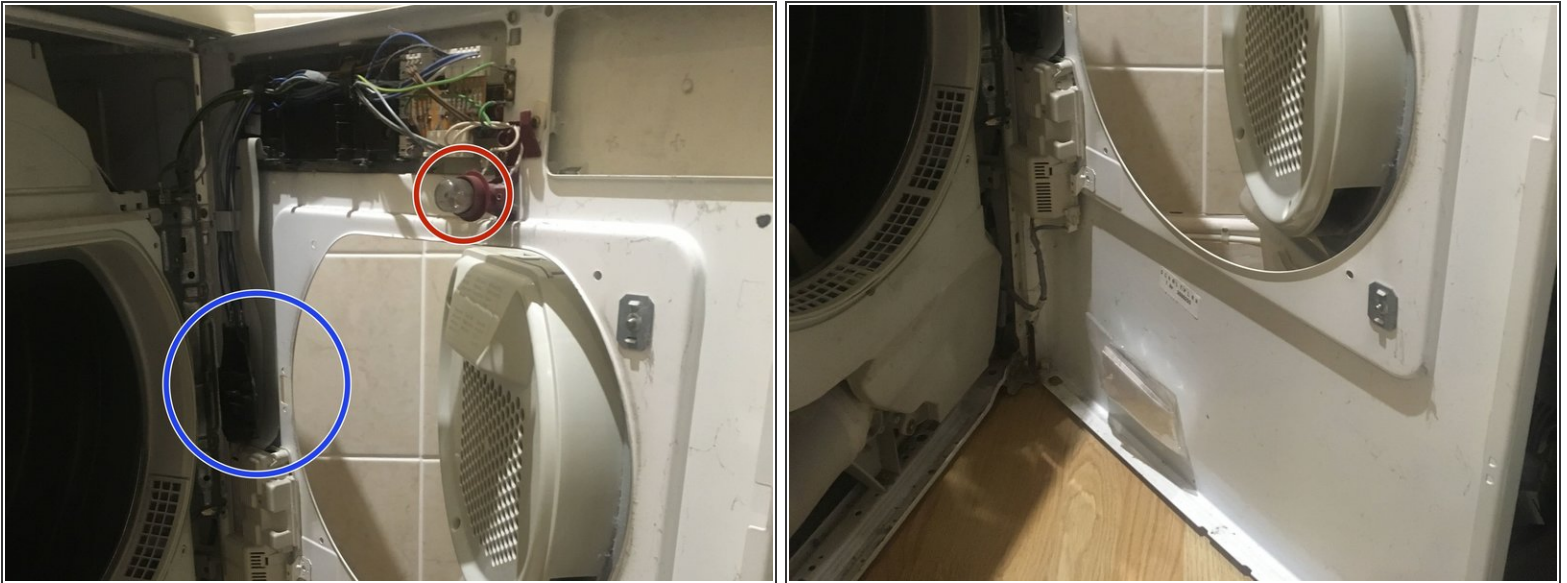
## Step 2 — Open the front of the drier



- Pull (probably fairly hard) on the side of the drier on your left. This will open the front of the drier.
- The front is hinged, so it should just swing open. Make sure you don't bash the door on something!



### Step 3



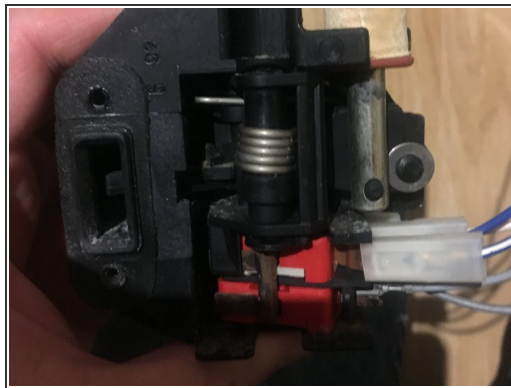
- The plastic packet at the bottom of the drier contains a schematic and a wiring diagram.
- At this point, make sure you have unplugged your drier before removing anything!
- If you are changing the bulb, it is ringed in red. Sorry, mine wasn't blown so I didn't check the type
- The lock is ringed in blue. If this is broken, we'll need to fully release the screws mentioned early.

## Step 4 — Fully remove the lock



- Close the front of the machine slightly and fully release the screws. Hold onto the lock on the other side if you don't want to let the wires support it.

## Step 5 — Swap the new lock in & reassemble



- My unit had 7 wires connected, several of which looked identical. I had my replacement in hand so swapped them one by one.
- Follow the instructions in reverse to reassemble!

To reassemble your device, follow these instructions in reverse order.