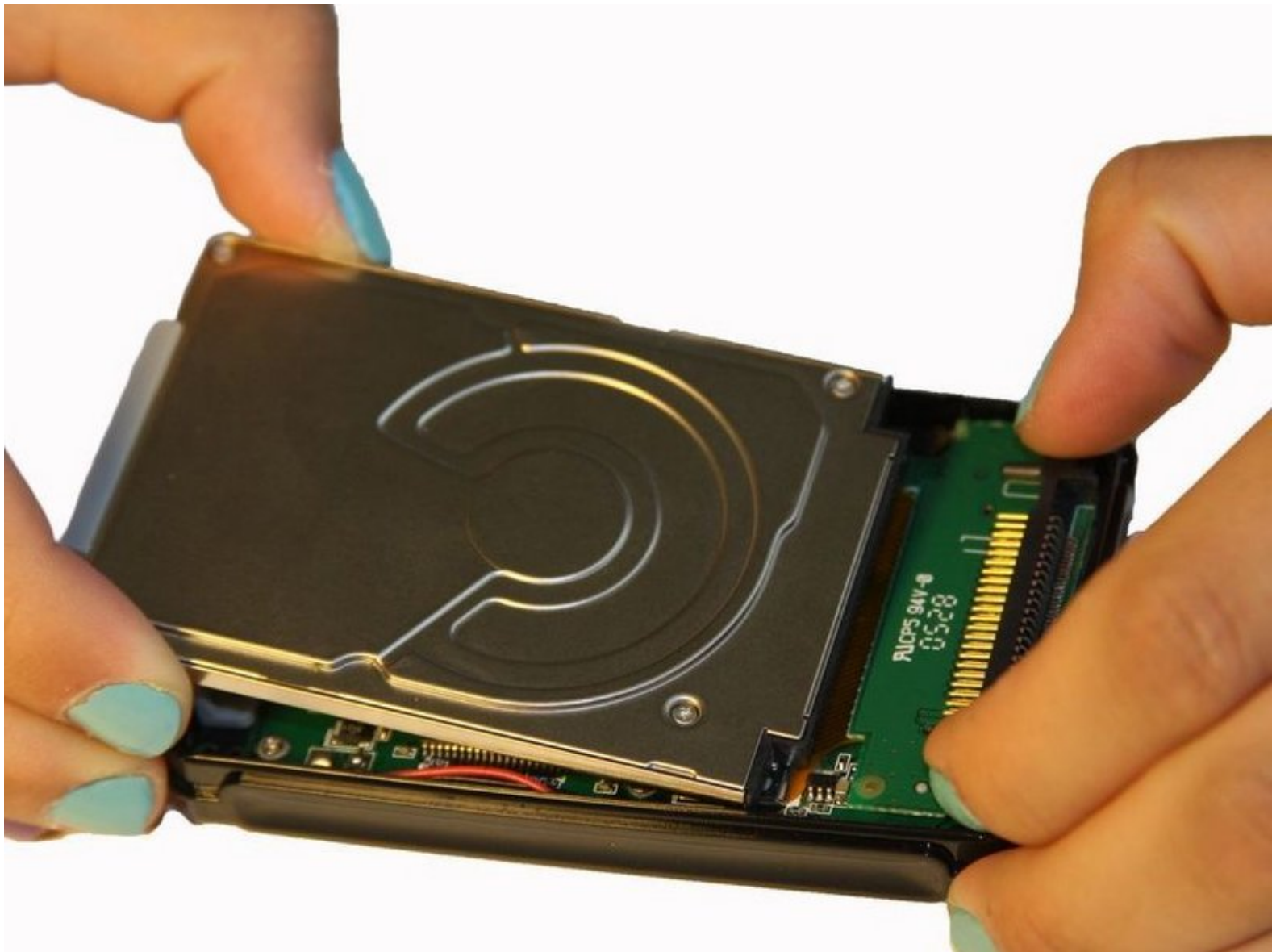




# Cirago M9030 Hard Drive Replacement

This guide shows how to install the hard drive.

Written By: Ryan Sutardji

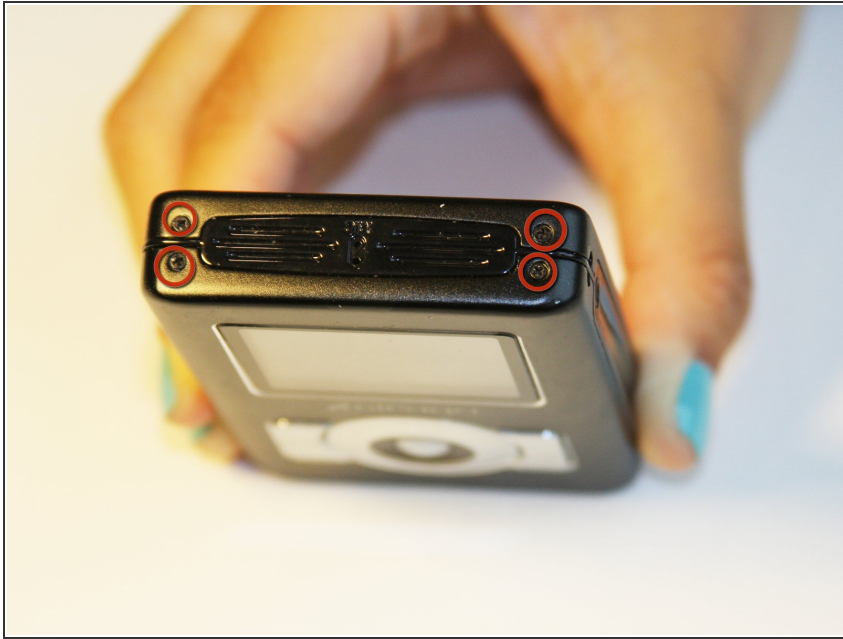


---

 **TOOLS:**

- [iFixit Opening Tools](#) (1)
  - [Phillips #00 Screwdriver](#) (1)
-

## Step 1 — Cover



- Using a Phillips #00 screwdriver, remove the four 1.1mm long screws from the top side.

## Step 2



- Using a Phillips #00 screwdriver, remove the four 1.1mm long screws from the bottom side.
- ⓘ Remove the warranty sticker across the bottom.

### Step 3



- Gently lift off the back and front casing.
- ⓘ The outer shell should easily come apart.

### Step 4 — Hard Drive



- Make sure the device screen is face down.

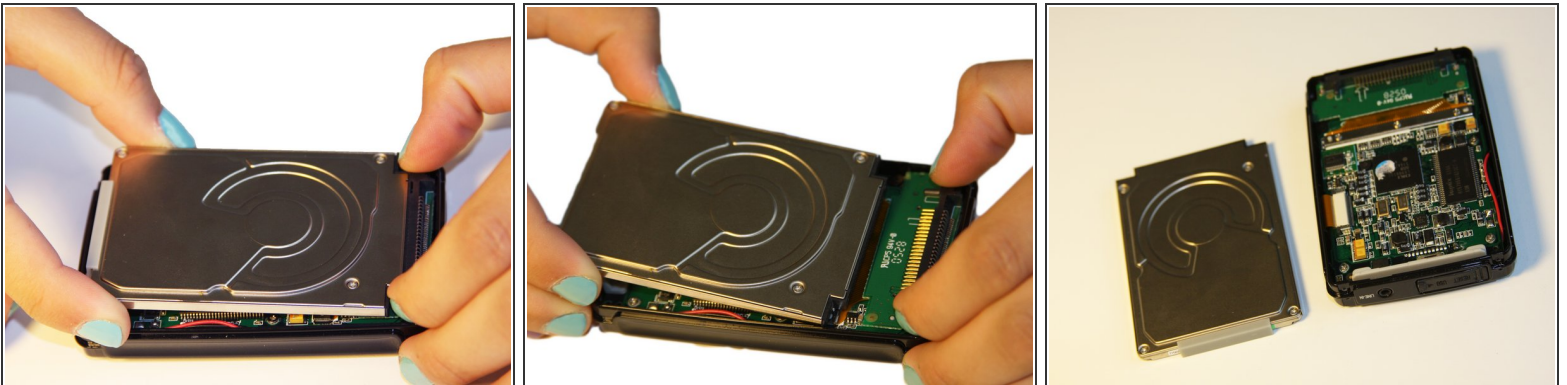


## Step 5



- Using the plastic opening tool, wedge the tool underneath the bottom left edge of the hard drive.
- Raise the bottom edge of the hard drive 15 degrees up from the device.

## Step 6



- Place fingers on the IDE connectors and gently slide the hard drive out from the IDE module.

To reassemble your device, follow these instructions in reverse order.