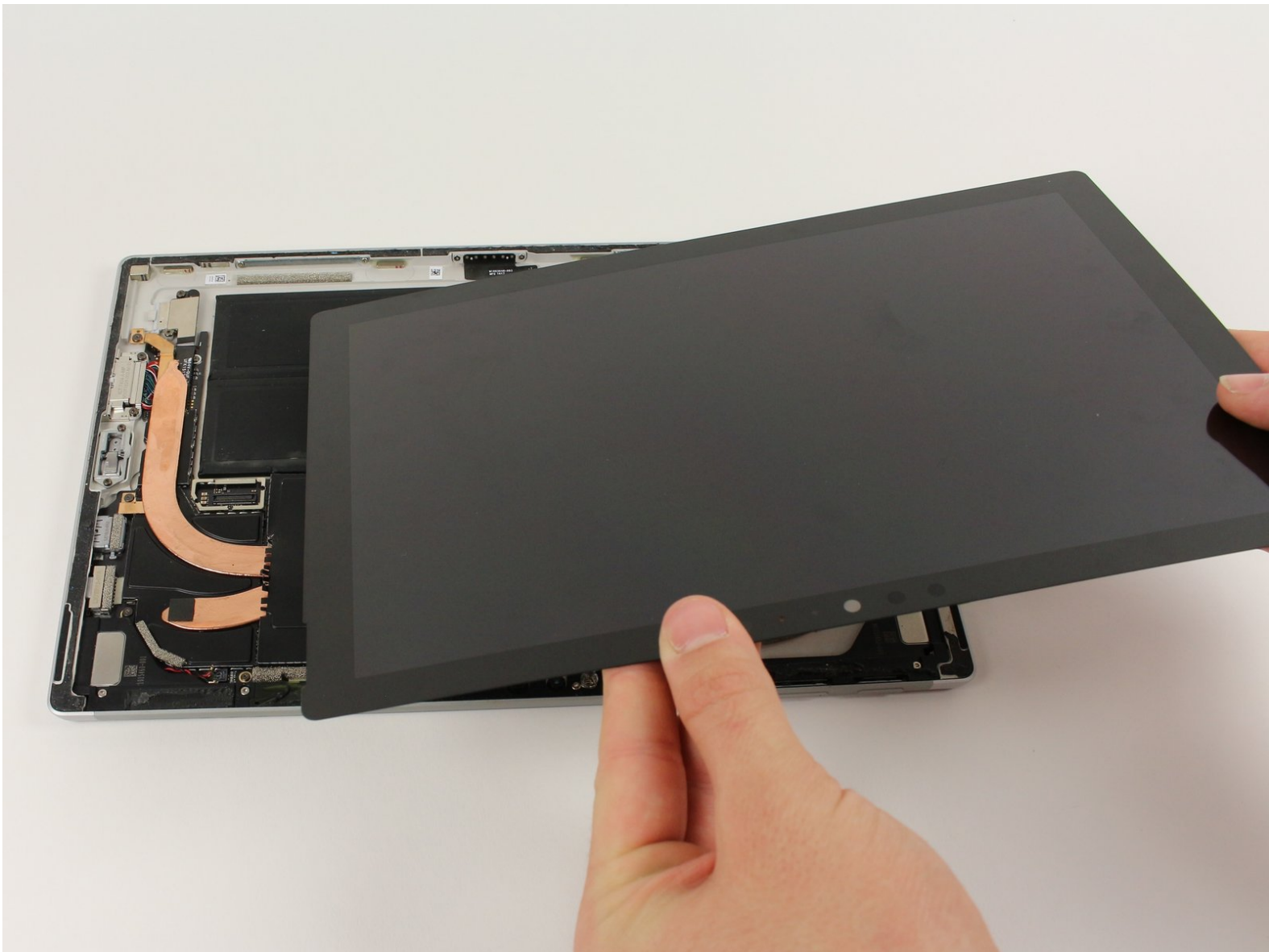




Microsoft Surface Pro 5 Screen Replacement

How to replace the touchscreen and display on your Microsoft Surface Pro 5 or Microsoft Surface Pro (2017).

Written By: Caleb Granch



INTRODUCTION

This guide will go over how to remove the screen/display on the Microsoft Surface Pro 5, also known as the Microsoft Surface Pro (2017).

TOOLS:

- [iOpener](#) (1)
- [iFixit Opening Picks set of 6](#) (1)
- [iFixit Opening Tools](#) (1)
- [Spudger](#) (1)
- [Suction Handle](#) (1)
- [Heat Gun](#) (1)
- [Tesa 61395 Tape](#) (1)
- [Microfiber Cleaning Cloths](#) (1)
- [Isopropyl Alcohol](#) (1)

PARTS:

- [Surface Pro 5 Screen and Digitizer](#) (1)

Step 1 — Screen



- ⚠** Before you begin, discharge the Surface Pro's battery below 25%. A charged lithium-ion battery can catch fire and/or explode if accidentally damaged during the repair.
- i** The display is strongly glued to the frame of the device.

 - To remove the display, first soften the adhesive by applying heat. You can use a heat pad, heat gun, or iOpener. In a pinch, a hair dryer can also work.
- ⚠** Be careful when using a heat gun, as too much heat can permanently damage the display and/or battery.
- Steadily and evenly heat the perimeter of the display until it's too hot to touch, and try to maintain that temperature for several minutes.

Step 2



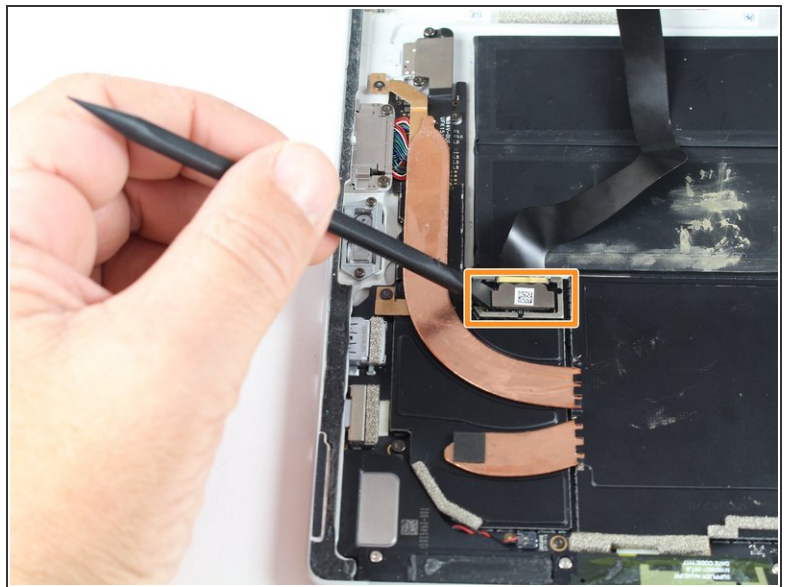
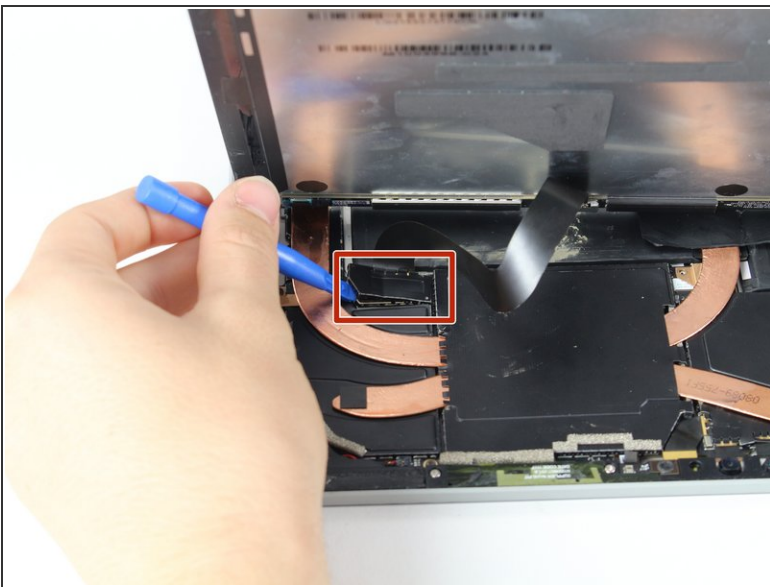
- Use a suction cup or an iSclack to pull up on the glass and create a slight gap between the glass and the metal frame.
 - ⓘ If your display is badly cracked, a suction cup may not adhere. It may help to first cover the display with a layer of packing tape. Alternatively, you can superglue your suction cup to the display.
- Insert an opening pick into the gap.
- Slide the pick around the sides and bottom of the display to cut the adhesive. Apply more heat as needed.
- ⚠ Work carefully—the glass is thin and will crack easily if you try to force it.
- Separate the top edge last. There are antennas on both sides, so be careful not to damage them. Use more heat or a bit of isopropyl alcohol to help weaken the adhesive.

Step 3



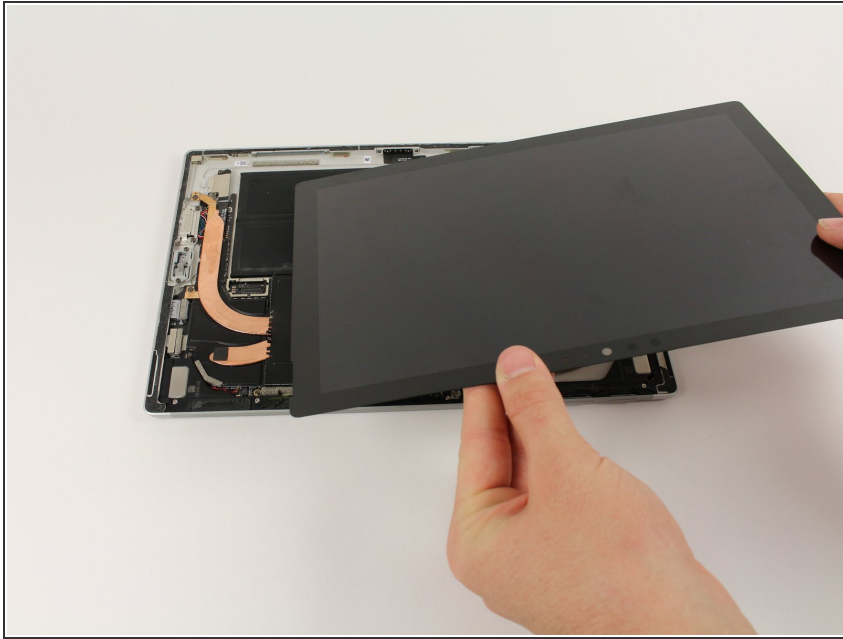
- Pry up the metal shield covering the smaller ribbon cable port using the plastic opening tool.
- Disconnect the smaller ribbon cable by prying up with the nylon spudger.

Step 4



- Pry up the metal shield covering the larger ribbon cable port using the plastic opening tool and remove.
- Disconnect the larger ribbon cable by prying up with the nylon spudger.

Step 5



- Remove the screen from the rest of the device .
- ☑ To replace the adhesive securing the screen, carefully remove any old adhesive from both the device and the back of the display. Clean and prep the surface with isopropyl alcohol and a lint-free cloth, swiping the cloth in one direction (not back and forth). Apply a strong double-sided tape, such as 2 mm [Tesa 61395](#).

To reassemble your device, follow these instructions in reverse order.

This document was last generated on 2019-07-20 01:10:00 AM.