



Huawei SnapTo G-620 Camera Replacement

Replace your SnapTo's faulty Camera.

Written By: Brian Omer Uzan



INTRODUCTION

If you are experiencing shutter delay with your Huawei SnapTo G-620's camera, then the camera may need to be replaced. This guide shows you how to replace your SnapTo's camera.

TOOLS:

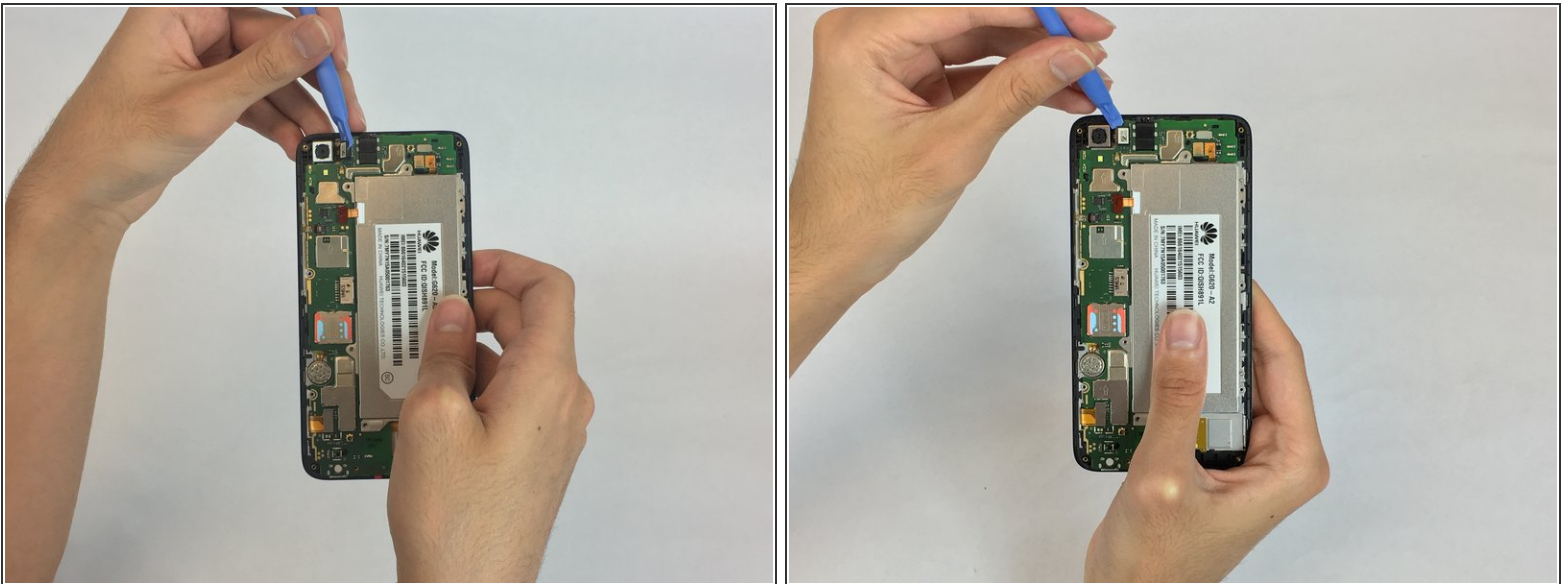
- [iFixit Opening Tools](#) (1)
 - [Metal Spudger](#) (1)
 - [64 Bit Driver Kit](#) (1)
-

Step 1 — Camera



- Pry open the back cover with your fingernail, using the divot to the lower left hand corner.
- Remove all fifteen 4mm Phillips J00 screws on the back panel.
- Using a metal spudger or your fingernail, remove the back panel.

Step 2



- Use a plastic opening tool to remove the pictured flat-top connector.
- Using the plastic opening tool remove the camera.

To reassemble your device, follow these instructions in reverse order.

This document was generated on 2020-11-15 10:41:47 PM (MST).

