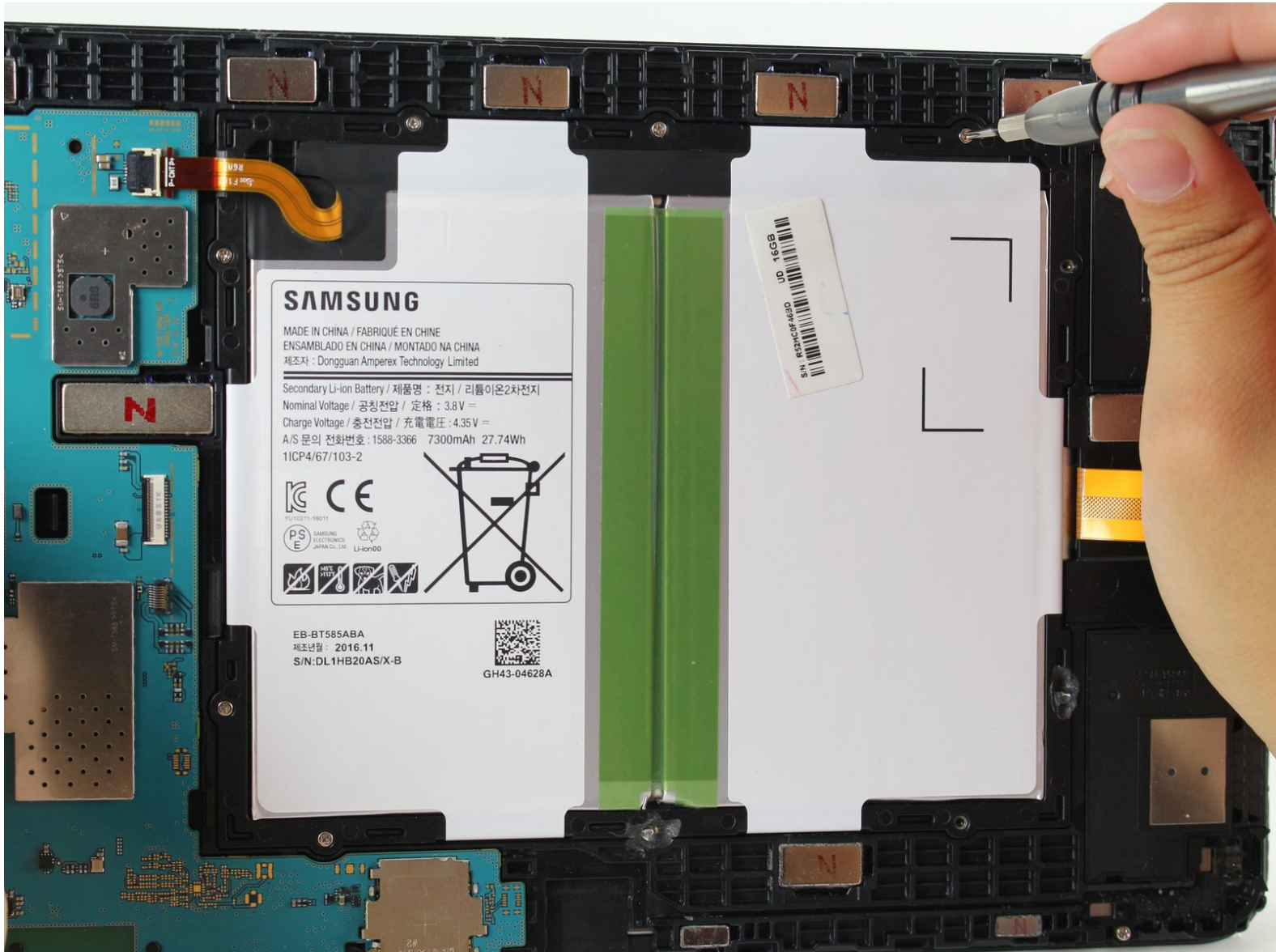




# Samsung Galaxy Tab A 10.1 Battery Replacement

How to replace batteries in the Samsung Galaxy Tab A 10.1.

Written By: Isabella Li



## INTRODUCTION

If you are having issues with keeping a charge or your battery is dead, use this guide to properly replace the battery in your Samsung Galaxy Tab A 10.1.

---

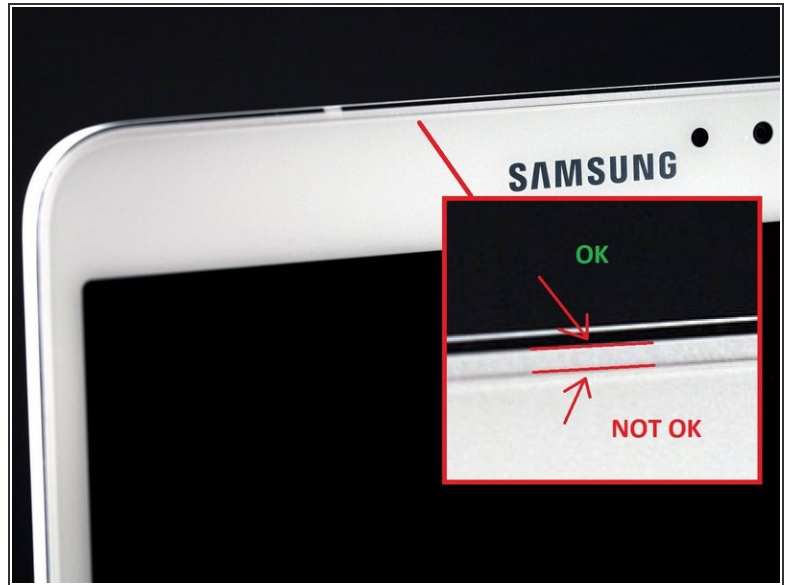
### TOOLS:

- [Heat Gun](#) (1)
- [iFixit Opening Tools](#) (1)
- [Phillips #000 Screwdriver](#) (1)

### PARTS:

- [Galaxy Tab A 10.1 Battery](#) (1)
-

## Step 1 — Back Panel



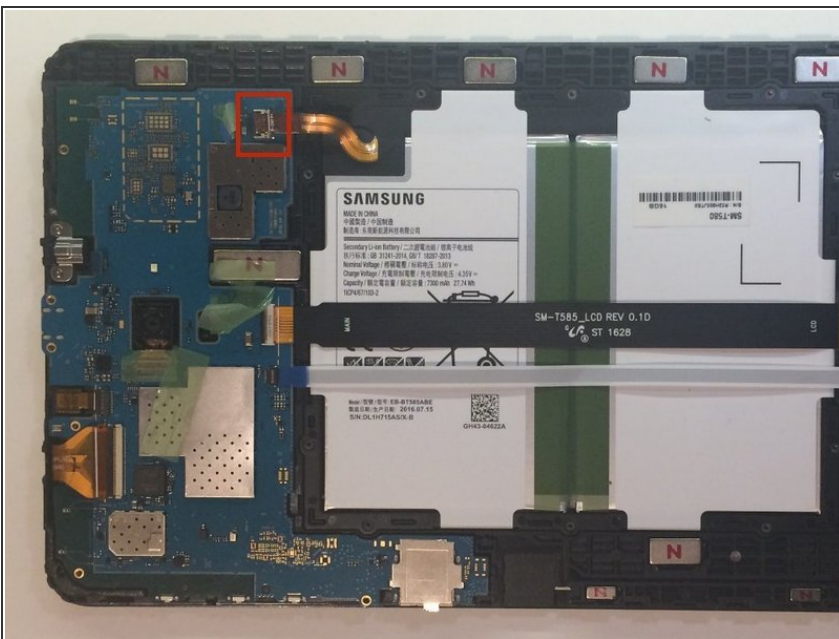
- Have the front of the device facing you.
  - Begin near one of the curved edges of the device (see photo two for visual example).
  - Place a plastic opening tool between the front and back panels.
- ⚠ If a plastic opening tool doesn't work, using a metal spudger may work, but it may damage the plastic on the device.
- ⚠ Remember to remove the micro SD card (if present) before you begin.

## Step 2



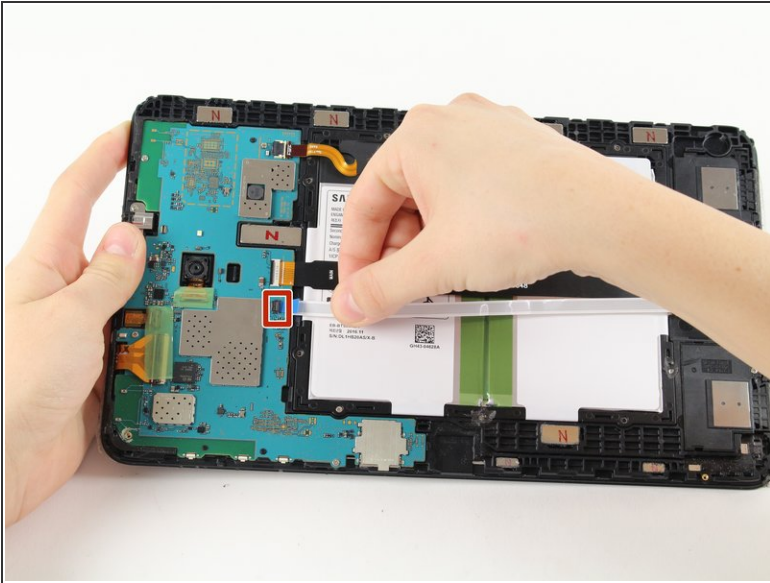
- Once the plastic opening tool is fully inserted, wedge it around the device's edges to separate the panels.
- Lift the back panel off of the device.
- ⓘ The back panel will make a clicking noise while being lifted off of the device.

## Step 3 — Disconnecting the battery



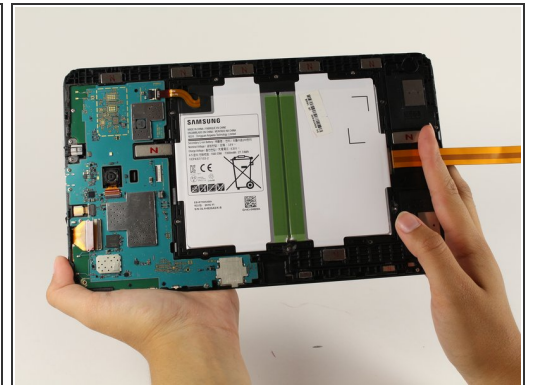
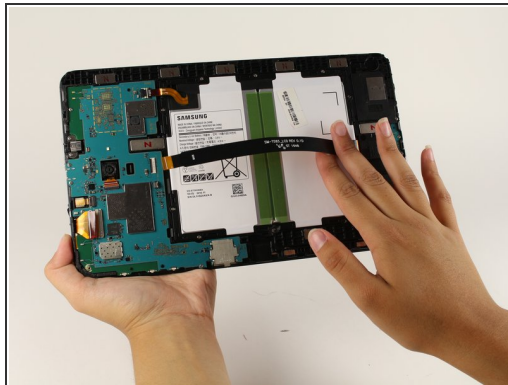
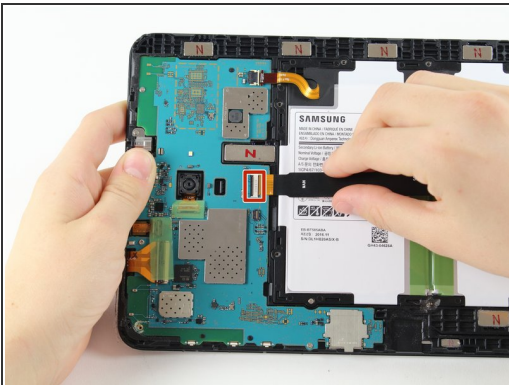
- Remove the adhesive film and flip up the retaining flap on the ZIF battery connector.
- Slide the orange battery ribbon cable out of the ZIF connector.

## Step 4



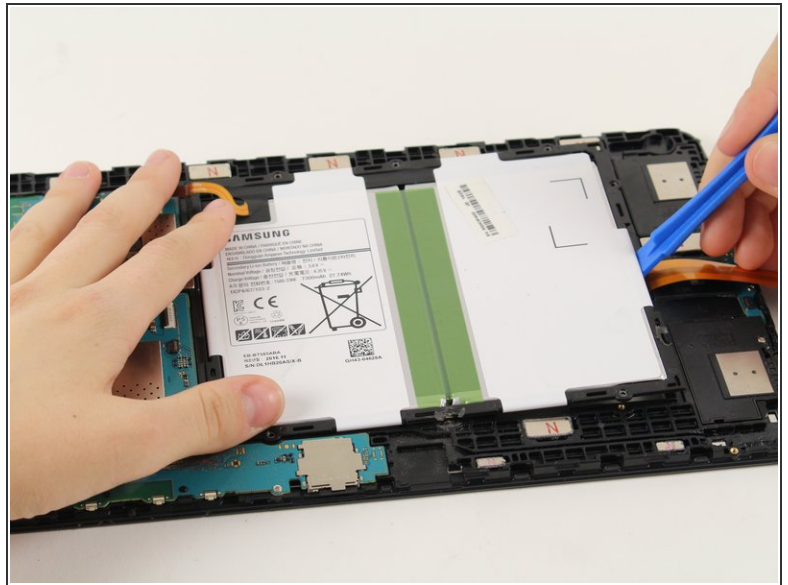
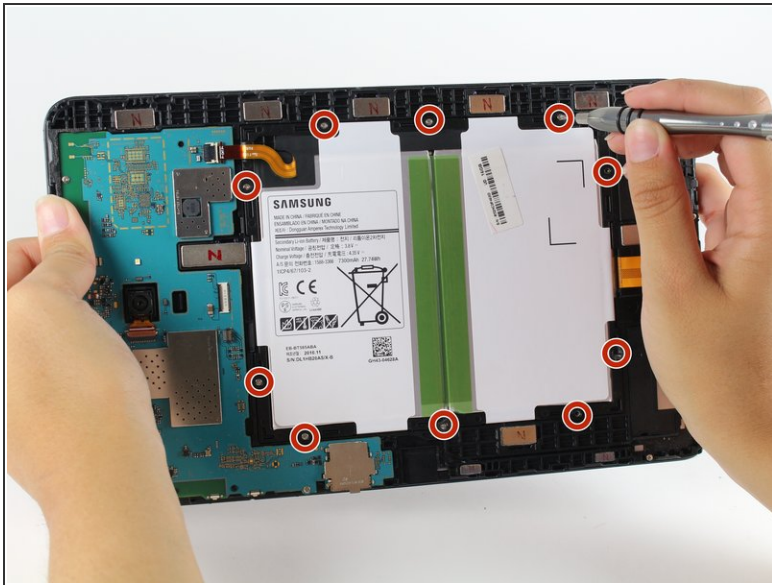
- Remove the adhesive film, lift the retaining tab and withdraw the white speaker ribbon.

## Step 5



- Lift the retaining tab and withdraw the black LCD ribbon.

## Step 6 — Battery removal



- Using a Phillips #000 screwdriver, remove the ten 4 mm screws around the battery.
  - Slide a plastic opening tool under the bottom of the battery close to the speakers and lift up.
- ⚠ The large rectangular white and black piece is the entire battery. Be careful not to puncture it.

To reassemble your device, follow these instructions in reverse order.