



Samsung Galaxy Note Pro 12.2 Battery Replacement

This guide will show you how to safely replace a dying battery in your Samsung Note Pro 12.2.

Written By: Tina Kong



INTRODUCTION

Over time, you may need to replace the battery in your tablet. This guide will show you how to replace your battery.

TOOLS:

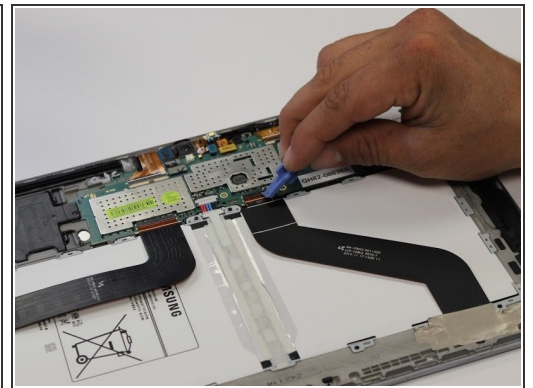
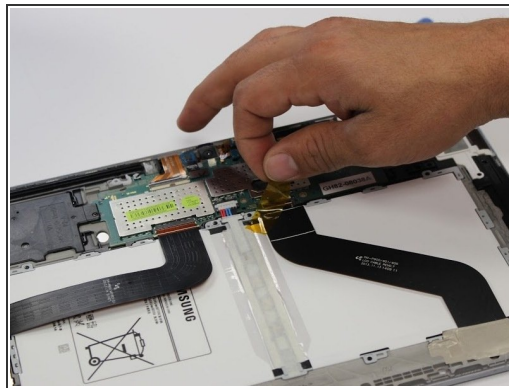
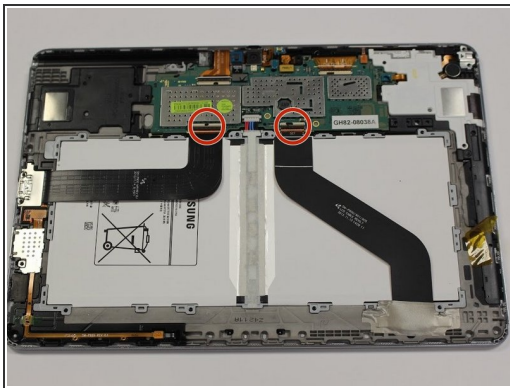
- [iFixit Opening Tools](#) (1)
 - [Magnetic Project Mat](#) (1)
 - [Phillips #00 Screwdriver](#) (1)
-

Step 1 — Battery



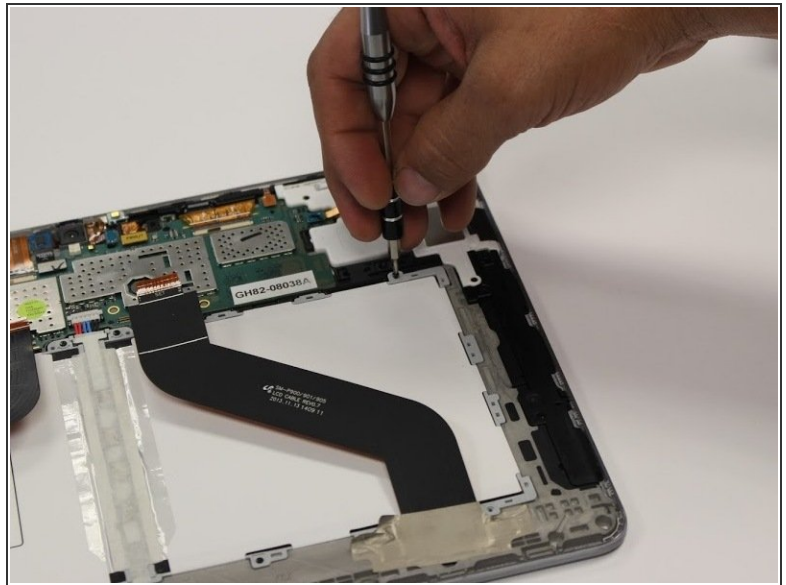
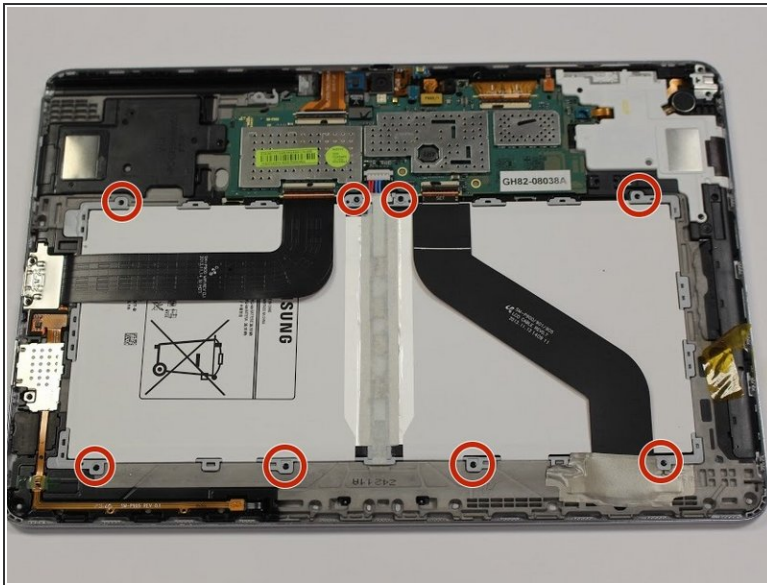
- ⓘ Make sure the device is powered off before starting repair.
- Carefully remove the back cover with the blue opening tool.
- ⓘ It is best to start with one corner and work your way around the device slowly.

Step 2



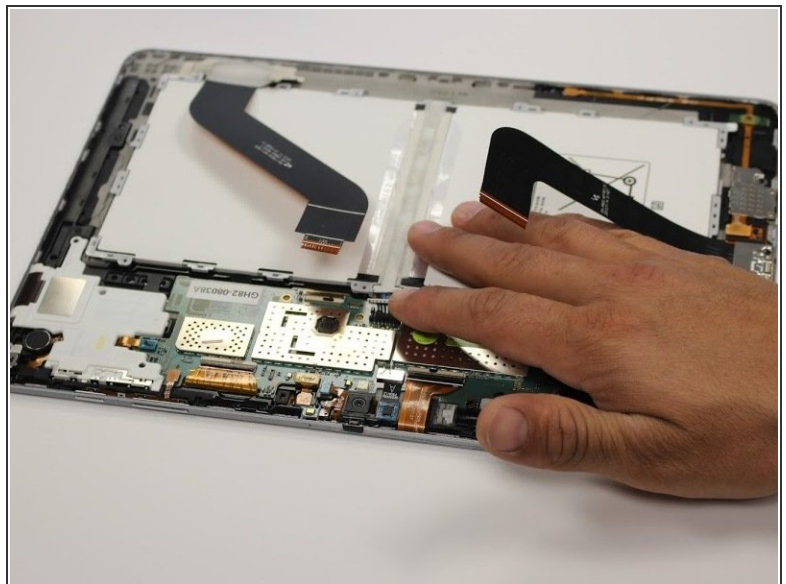
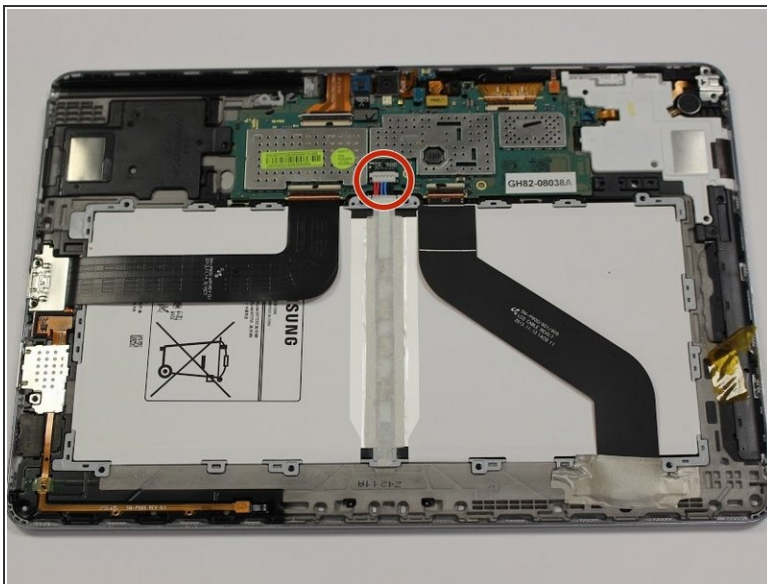
- ⓘ You may have a piece of tape covering your strips, make sure to remove them before starting this step.
- Flip open the black tabs that are securing the black strips across the battery. This may require the plastic opening tool.

Step 3



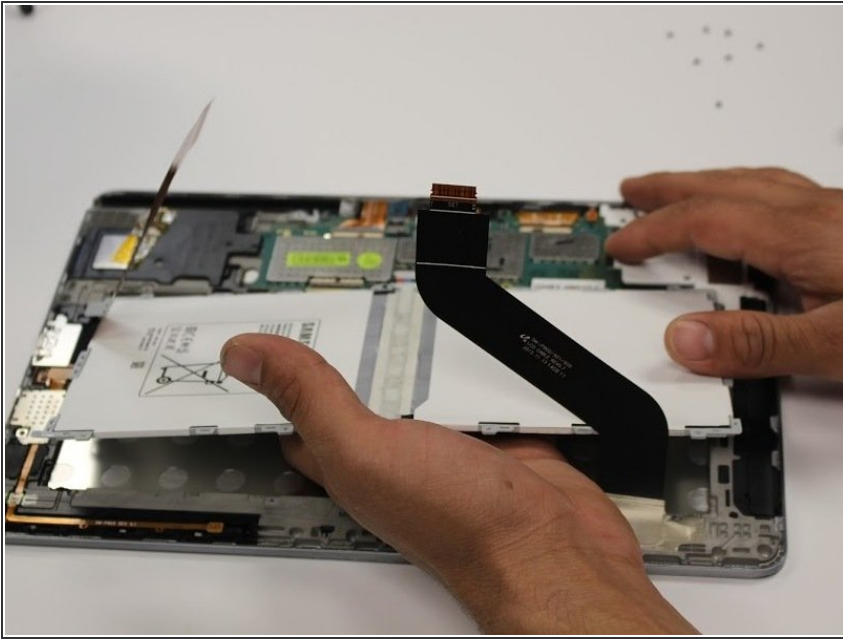
- Remove the eight 3mm Phillips #00 screws surrounding the battery.
- ⚠ The screws are very small, use a magnetic board to keep track of all loose screws.

Step 4



- Remove the battery connector by gently pulling up with your finger.

Step 5



- Once the battery is free, gently remove the battery from the device.
- ⚠ The battery and the connectors are fragile, so use caution when removing it from the device.

To reassemble your device, follow these instructions in reverse order.