



# Sony Ericsson W518a Faceplate Replacement

How to remove the faceplate of the Sony Ericsson W518a.

Written By: kgkramer



## INTRODUCTION

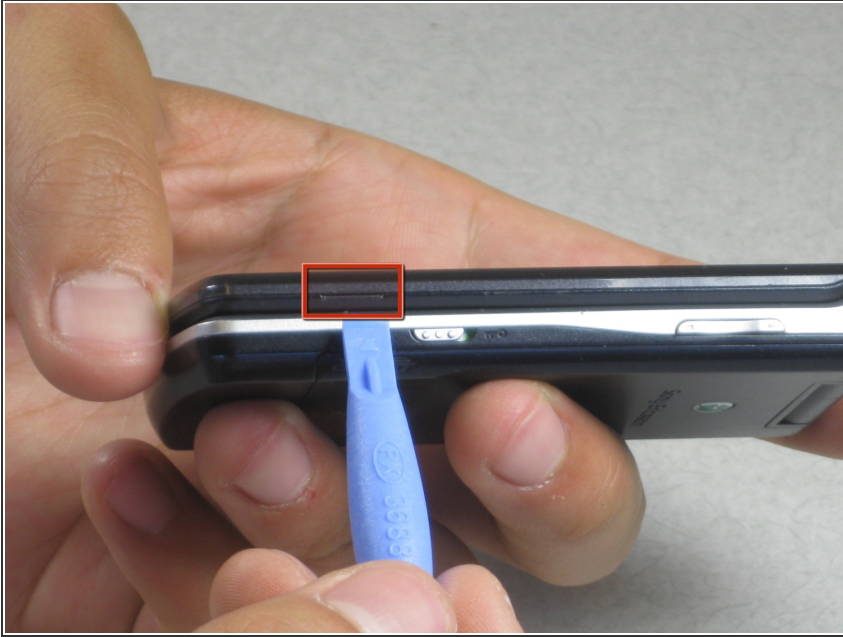
This guide demonstrates how to replace the the cell phone faceplate.

---

### TOOLS:

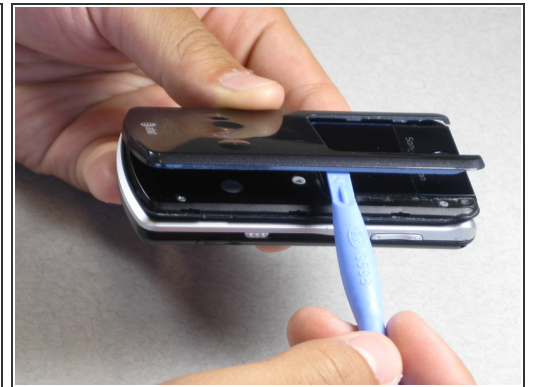
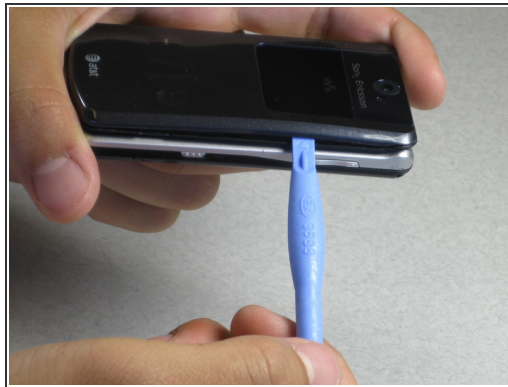
- [iFixit Opening Tools](#) (1)
-

## Step 1 — Faceplate



- Find the small notch on the side of the phone. The notch is located by the "fast-forward" button and the "lock" switch.

## Step 2



- Insert your plastic opening tool into the notch.
  - Pry off the faceplate by gently sliding the plastic opening tool around the phone while still keeping the tool under the edge of the phone.
  - When enough of the faceplate has been lifted it can be easily removed.
- In order to replace the faceplate, simply press and snap the faceplate back onto the front of the phone.

To reassemble your device, follow these instructions in reverse order.

This document was last generated on 2017-11-03 05:26:01 AM.