



Sony Ericsson W518a SIM Card Replacement

Remove the SIM card from the Sony Ericsson w518a cell phone.

Written By: Branden



 **TOOLS:**

- [iFixit Opening Tools](#) (1)
-

Step 1 — Battery



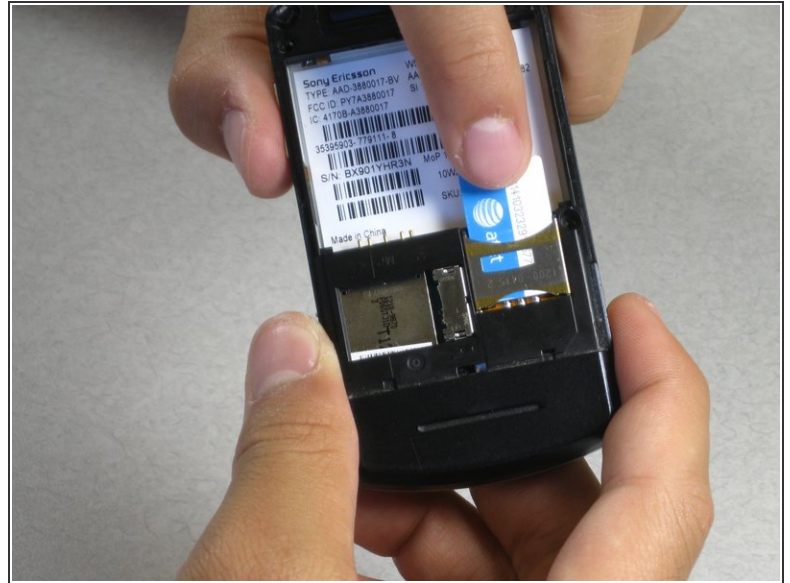
- Insert the plastic opening tool in the notch to remove the cover.

Step 2



- Use your fingers to pull up and remove the battery.

Step 3 — SIM Card



- Using your finger to pull out the SIM card.

To reassemble your device, follow these instructions in reverse order.

This document was last generated on 2019-07-08 02:42:31 PM.