



Sony BDP-S3200 Motherboard Replacement

This guide shows you how to replace the motherboard for the Sony BDP-S3200.

Written By: Brandon Correa



INTRODUCTION

Use this guide to replace the motherboard in your device.

TOOLS:

- [Phillips #1 Screwdriver](#) (1)
-

Step 1 — Sony BDP-S3200 Disassembly



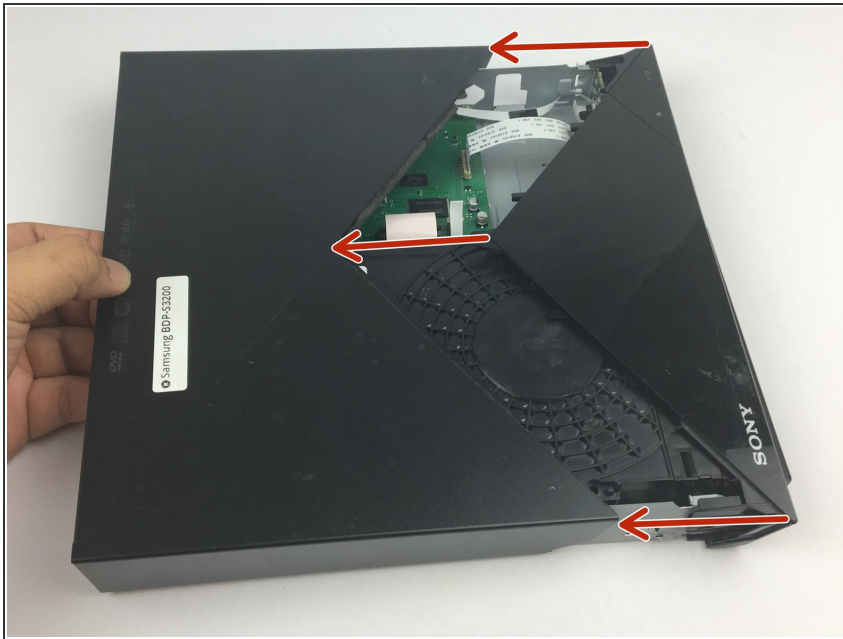
- Remove all cables from the device.

Step 2



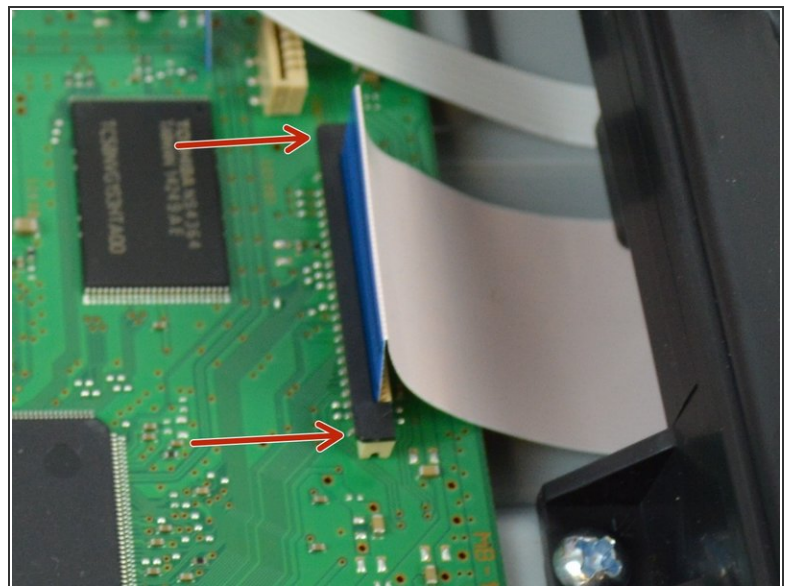
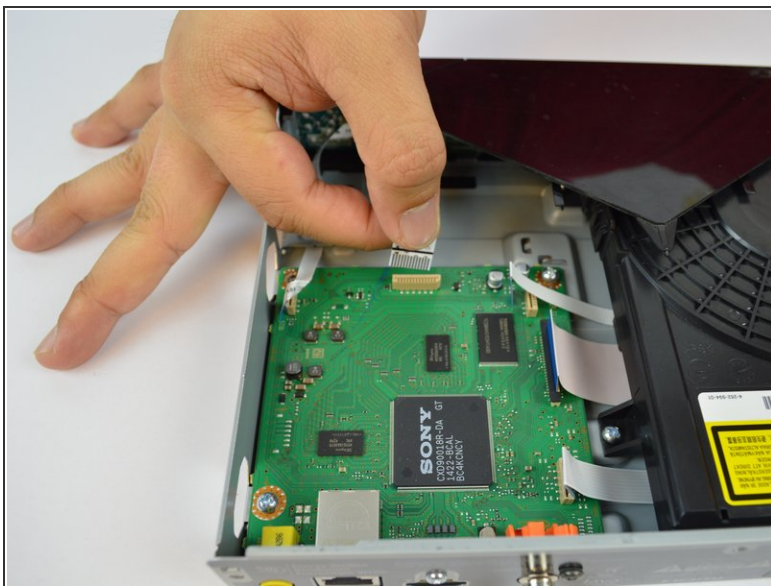
- Use a #1 Phillips screwdriver to remove the three screws located in the back of the device.

Step 3



- Pull the top cover off by sliding back from the device once the screws have been taken out.

Step 4 — Motherboard



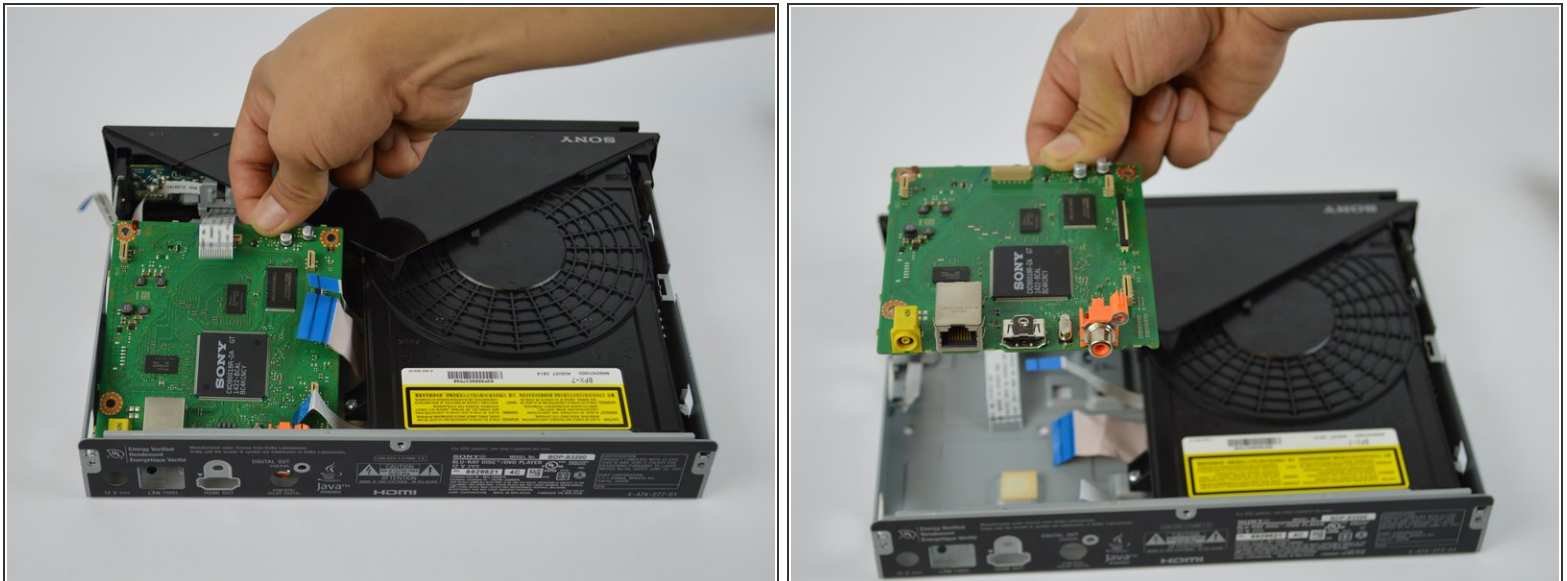
- Carefully detach the white strips from the motherboard.
- ⓘ Be sure to lift the black latch for the largest strip next to the disc drive before removing it.

Step 5



- Remove screw above HDMI OUT port.
 - Remove screw above DIGITAL OUT port.
 - Remove the three screws on the motherboard.
- i** Use a #1 Phillips screwdriver to remove all screws.

Step 6



- Remove motherboard from the device.
- i** Be careful not to damage any components of the motherboard when removing it from the device.

To reassemble your device, follow these instructions in reverse order.