



Samsung Gear VR USB Connector Replacement

Replace the USB connector in order to connect your device to the Samsung Gear VR.

Written By: Alfredo Aparicio



INTRODUCTION

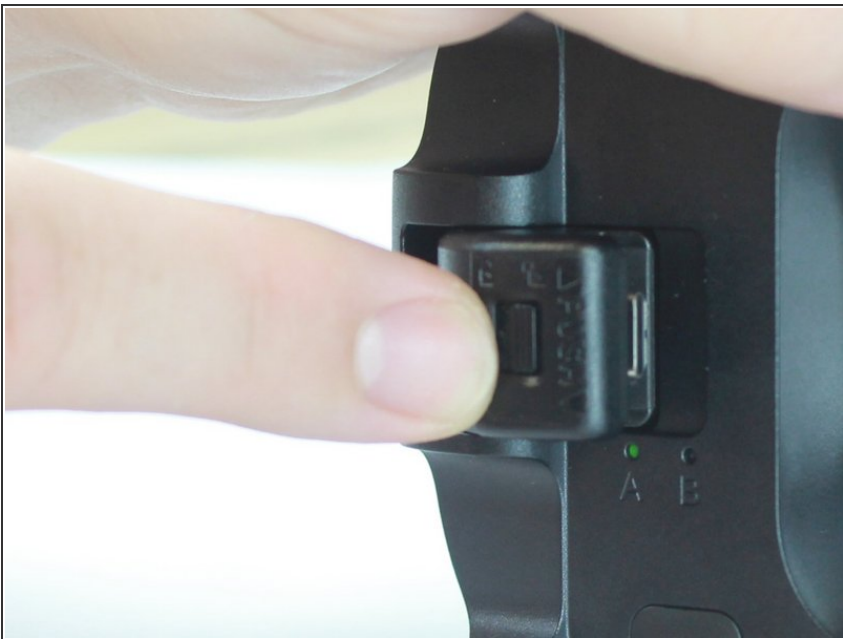
The Samsung Gear VR supports Micro USB and USB-C ports. If your mobile device is unable to physically connect to the headset ensure that the adapter is the appropriate shape for your device's port. This guide will instruct you how to change which adapter is connected to the headset if needed.

Step 1 — USB Connector Replacement



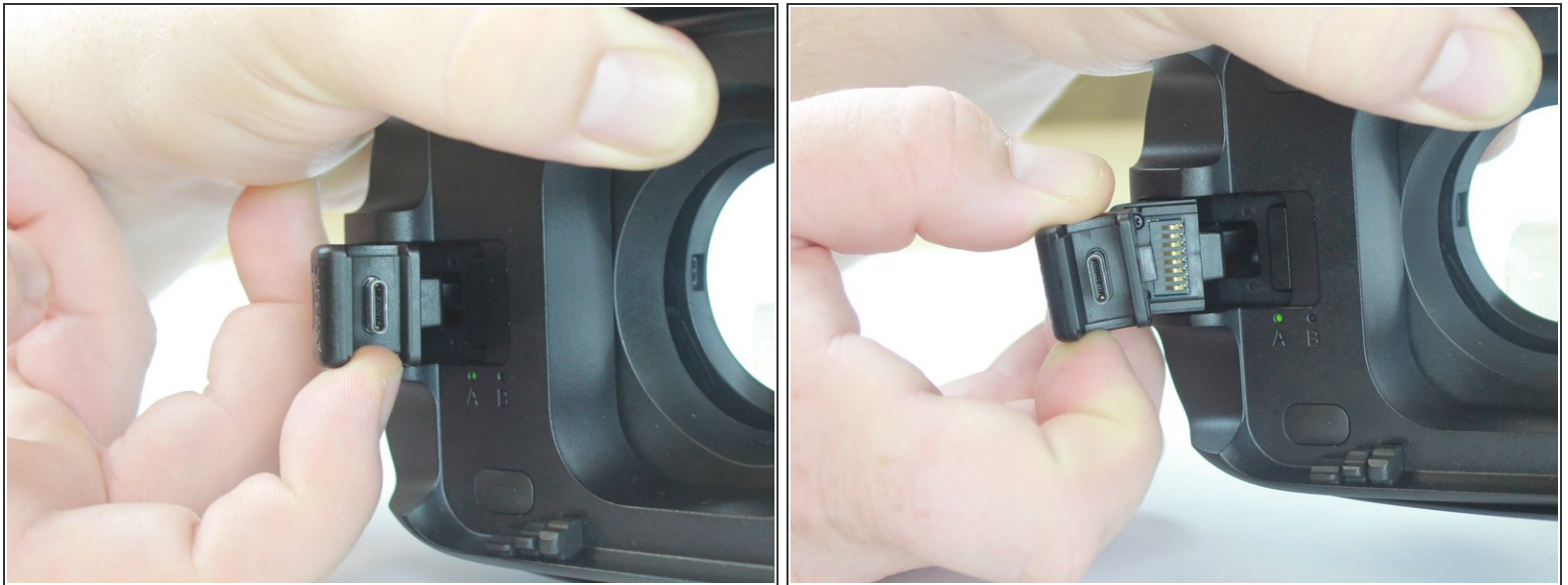
- Remove front cover from headset.

Step 2



- Slide the latch to the right to unlock the current connector.

Step 3



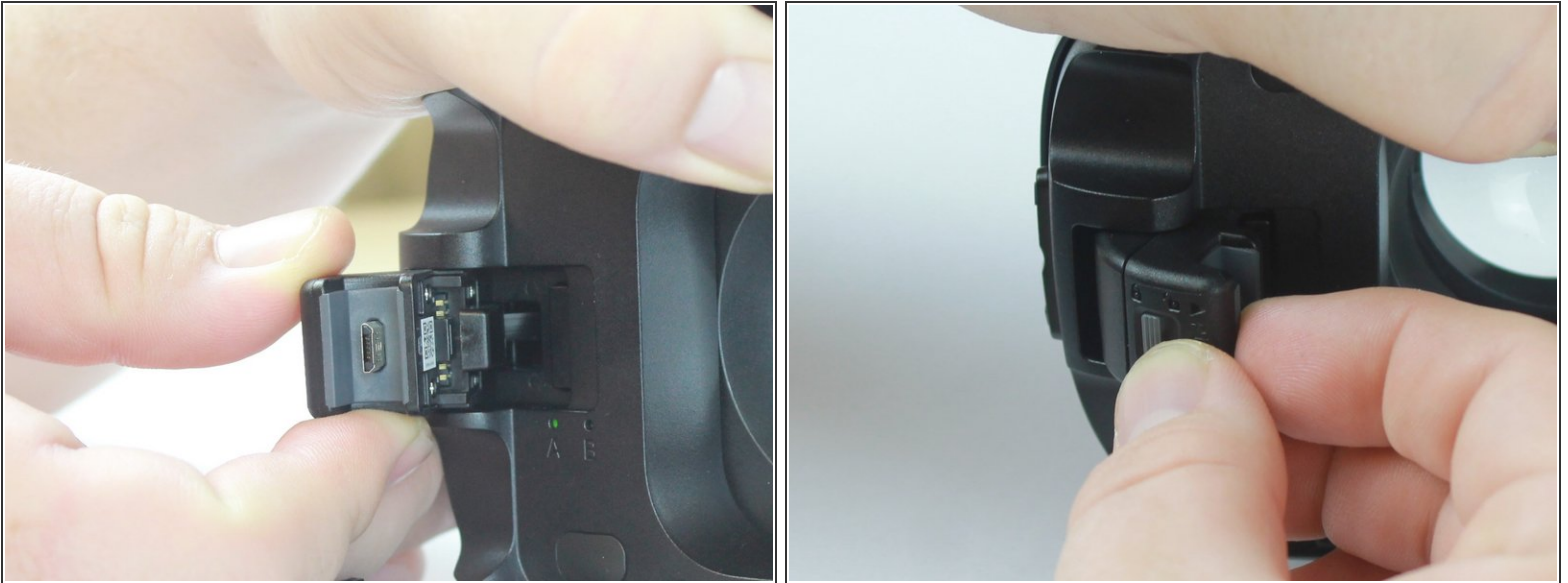
- Lift connector clip away from headset and towards you.
- Slide current connector out and away from headset until it is disconnected from connector clip.

Step 4



- Select which connector fits the port of the device you wish to use with the Samsung Gear VR.
- ⓘ The Samsung Gear VR is packaged with connectors for Micro USB and USB-C.

Step 5



- Slide the connector that connects to your device back onto the connector clip until you feel it settle into place.
- Slide the lock latch to the left to secure the connector into place.

To reassemble your device, follow these instructions in reverse order.