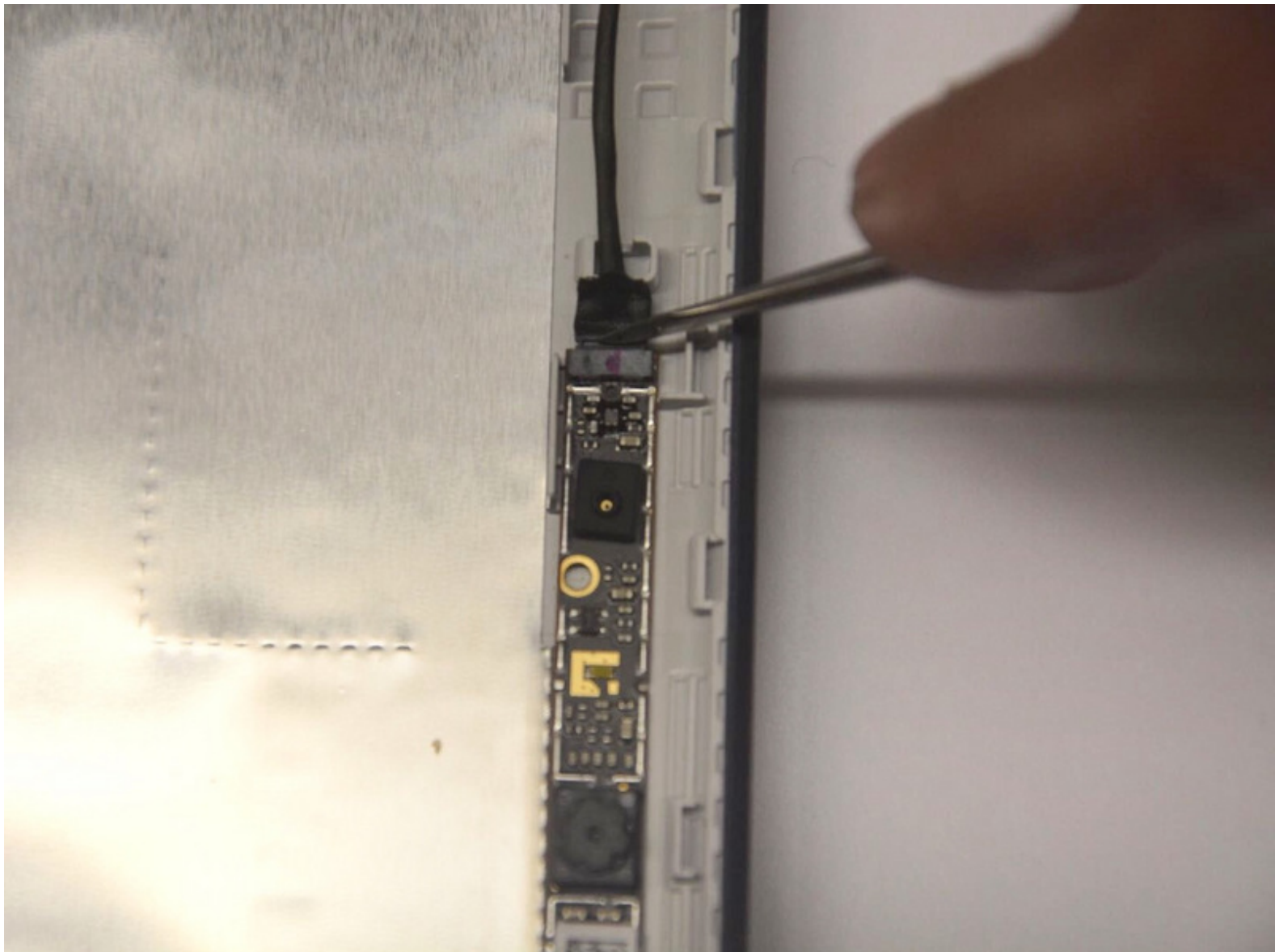




Asus Chromebook C202SA-YS02 Camera Replacement

This guide will take you through, step-by-step, how to replace the camera.

Written By: Beau Hansen



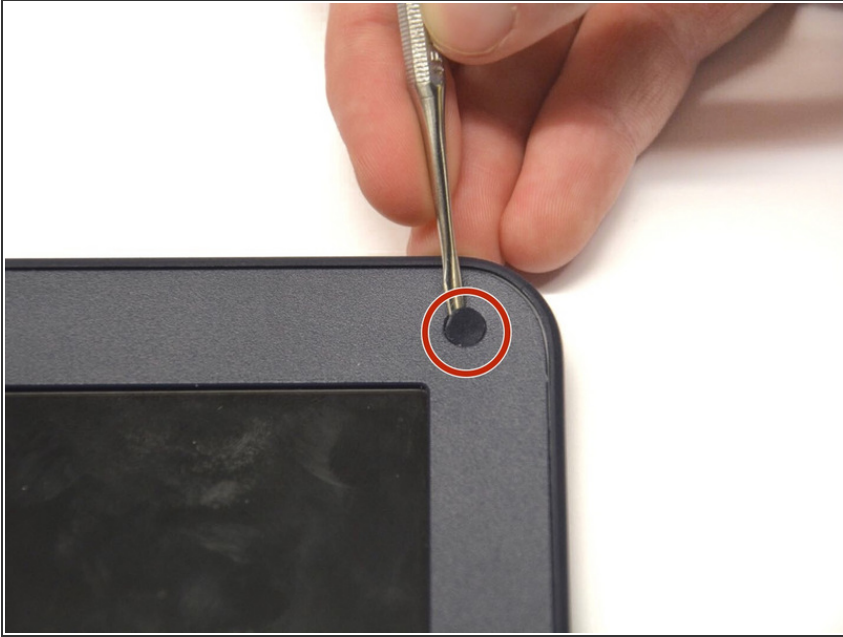
INTRODUCTION

Sometimes your camera can become damaged and need replacing. Note: if your device locates the camera, you may not actually need to replace the hardware. If you do, though, this guide is for you!

TOOLS:

- [Phillips Head Screwdriver: Size PH1](#) (1)
 - [Spudger](#) (1)
-

Step 1 — Bezel



- Using a flat blade, remove the two screw covers on the front of the bezel. They are attached by adhesive, so you may have to dig at it a little bit.

Step 2



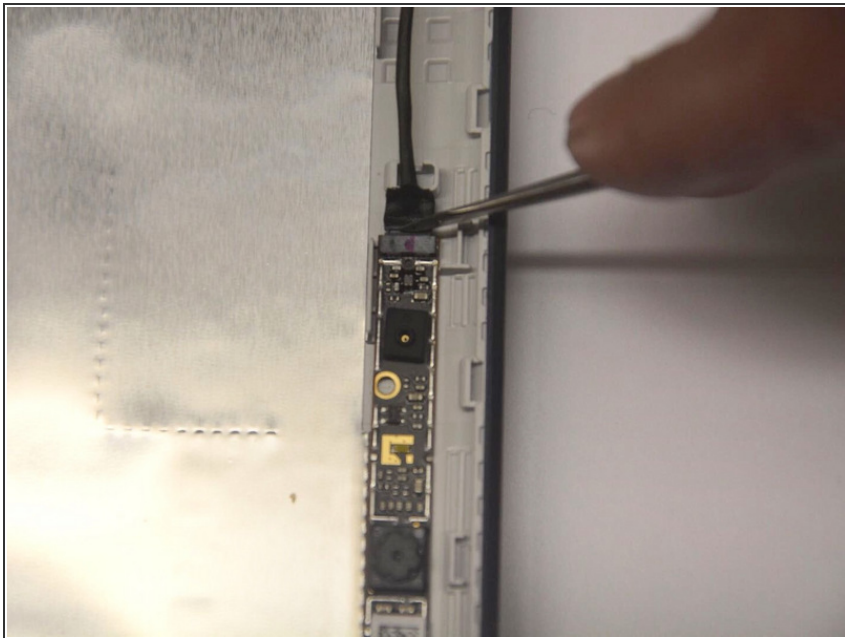
- Unscrew and remove the two Phillips #1 4.5 mm screws that are now visible.

Step 3



- Using the plastic opening tool, carefully pry off the bezel. It will come off entirely, so be careful not to break it.

Step 4 — Camera



- Using the spudger, disconnect the cable from the camera. The camera will then pop out.

To reassemble your device, follow these instructions in reverse order.