



Asus X200CA Wifi Card Replacement

This guide will show you how to replace the wifi card of the Asus X200CA Laptop.

Written By: Jacqueline Collier



 **TOOLS:**

- Phillips #00 Screwdriver (1)
 - Tweezers (1)
-

Step 1 — Keyboard



- Remove the 8 black 4.7mm screws securing the keyboard to the bottom cover.
- Remove the black 14.5mm screw from the center of the bottom cover.

Step 2



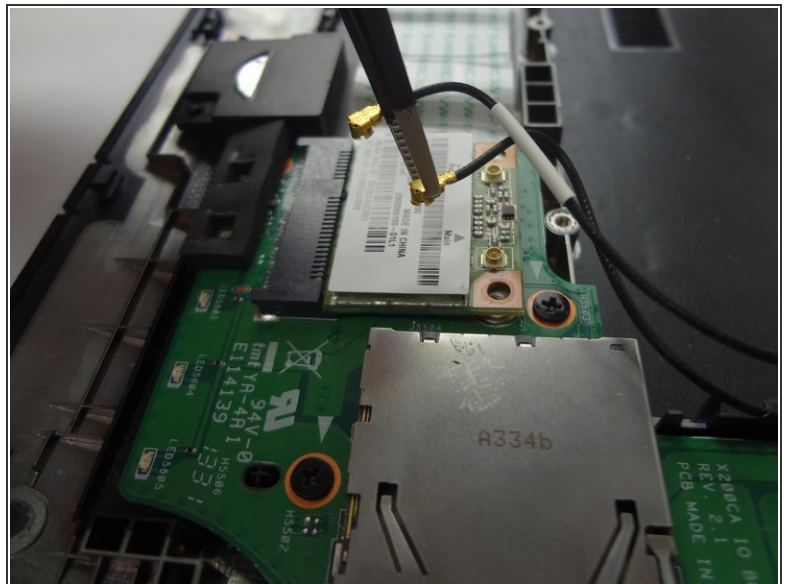
- Wedge a metal spudger between the keyboard and bottom cover and slide it around the perimeter until all edges separate.

Step 3



- Pull apart the keyboard and the bottom cover using your hands.

Step 4 — Wifi Card



- Use a Phillips #00 screwdriver to remove the 2 screws.
- Use tweezers to separate the 2 coaxial connectors.

Step 5



- Use fingers or tweezers to remove the wifi card.

To reassemble your device, follow these instructions in reverse order.