



Samsung Galaxy Note Pro 12.2 SD Port Replacement

This guide will show you how to replace a faulty SD port in your Samsung Note Pro 12.2.

Written By: Tina Kong



INTRODUCTION

If your device is unable to read your SD card, you may need to replace your port. This guide will show you how to safely replace your SD port.

TOOLS:

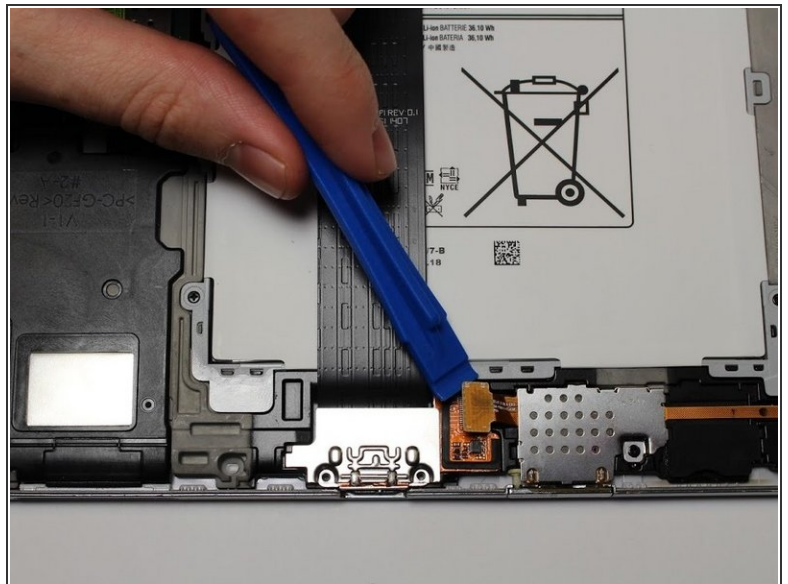
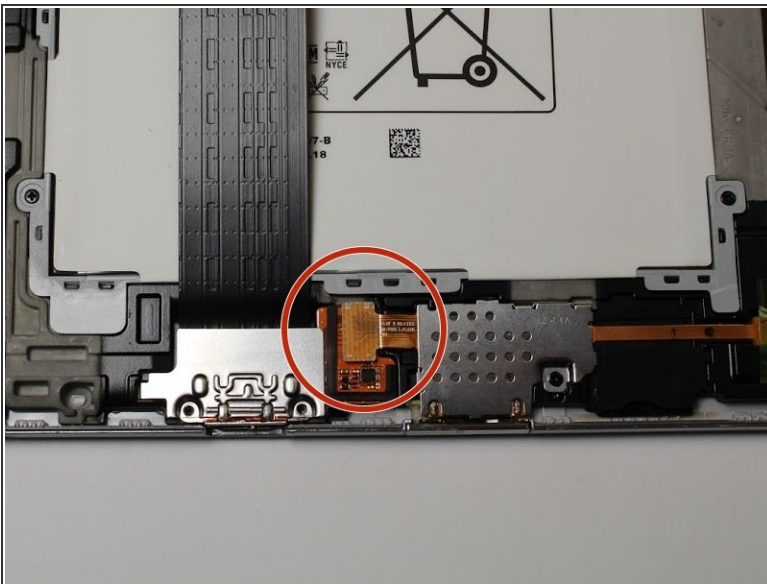
- [Tweezers](#) (1)
 - [iFixit Opening Tools](#) (1)
 - [Magnetic Project Mat](#) (1)
 - [Phillips #00 Screwdriver](#) (1)
-

Step 1 — SD Port



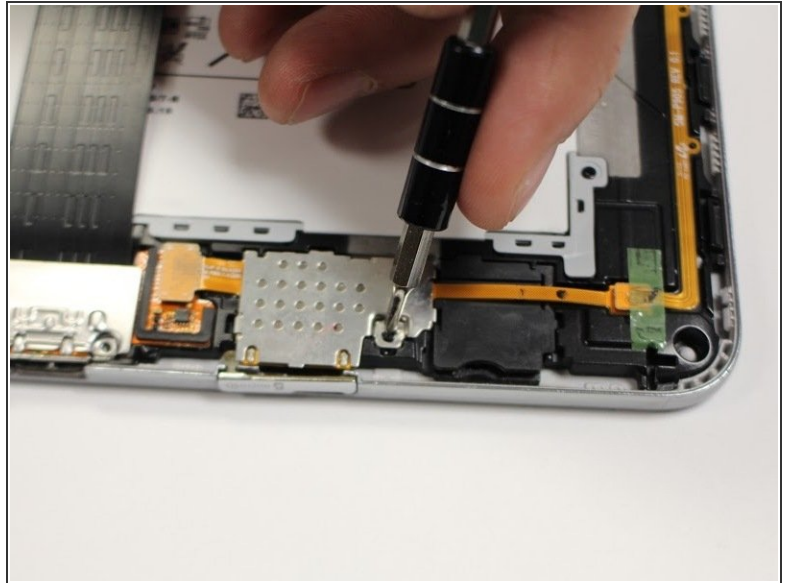
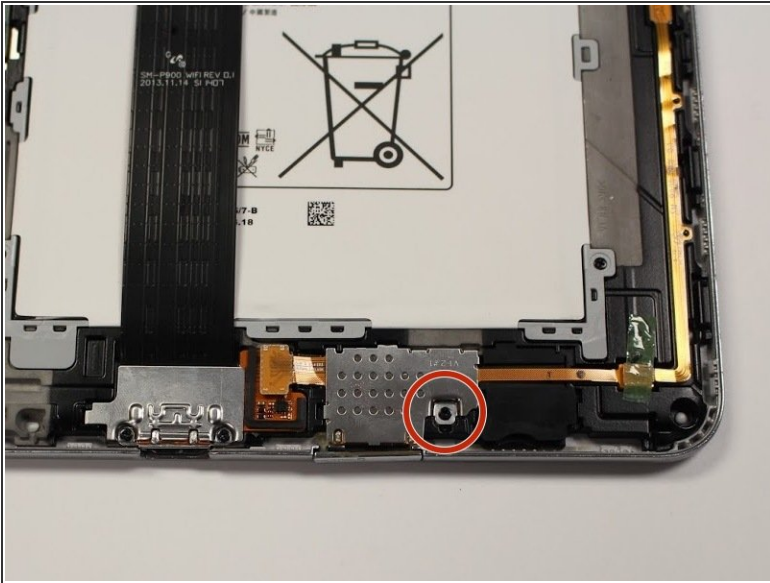
- ⓘ Turn off your device before starting your repair.
- Carefully remove the back cover with the plastic opening tool.
- ⓘ It is best to start with one corner and work your way around the device slowly.

Step 2



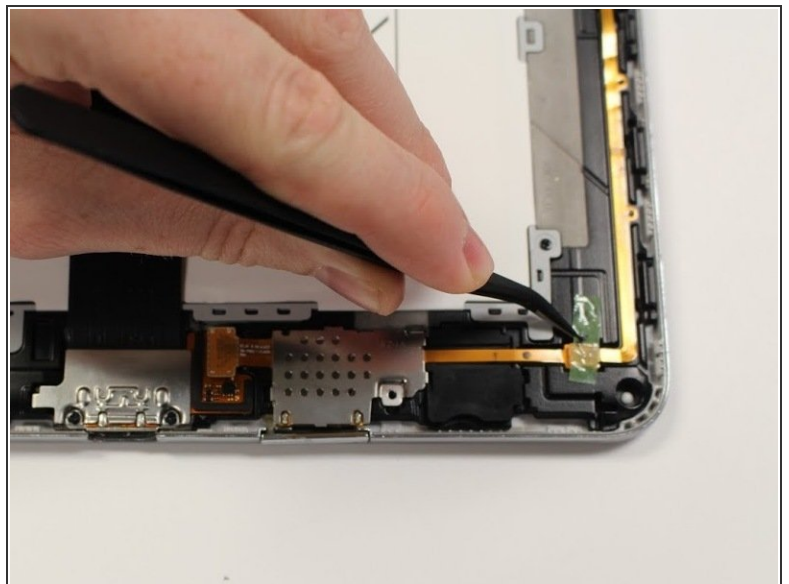
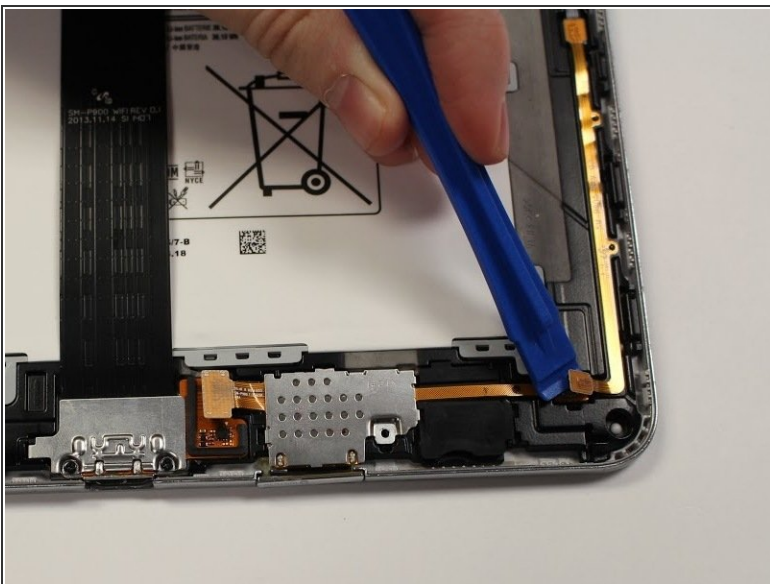
- Pop up the orange tab connected to the SD port with the plastic opening tool.

Step 3



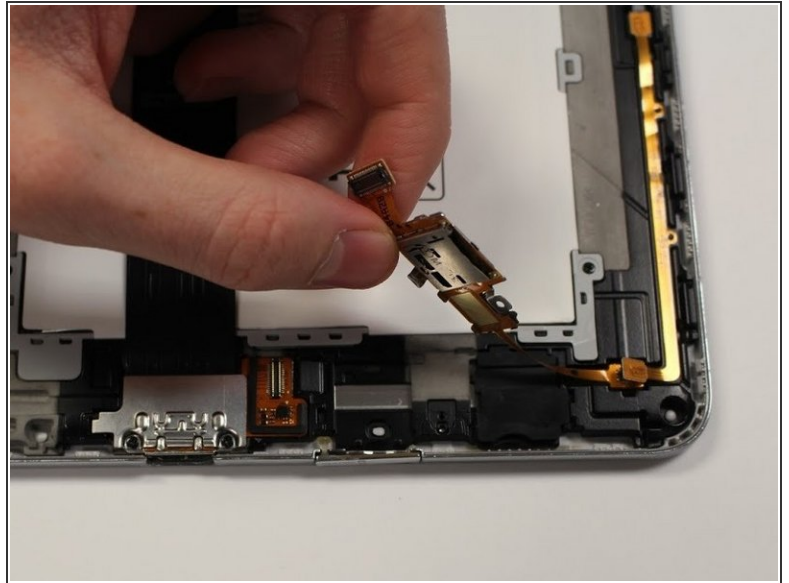
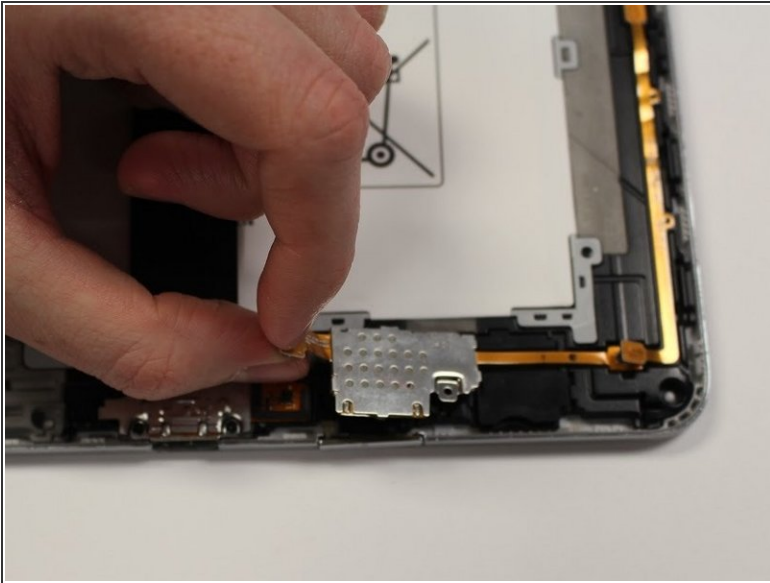
- Remove the one 3mm Phillips #00 screw connected to the SD port.

Step 4



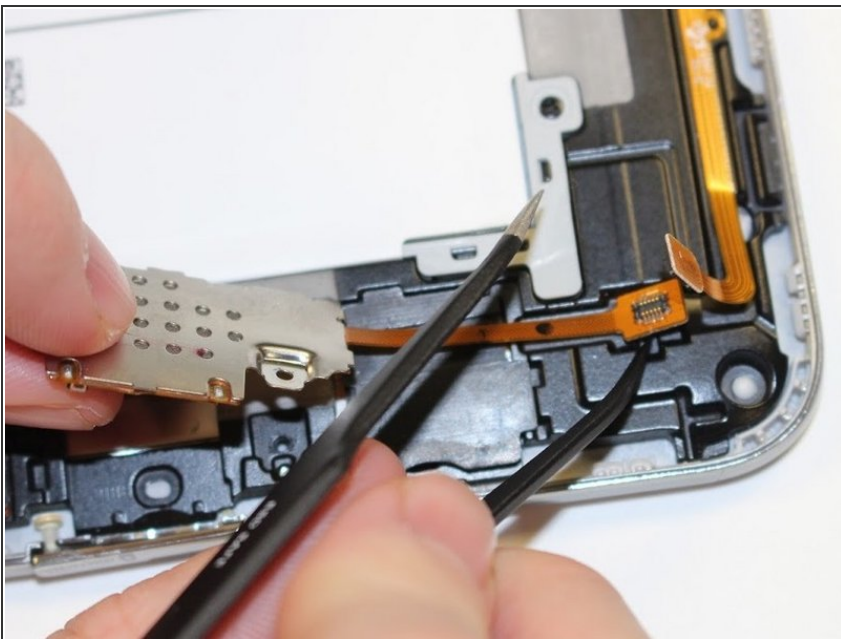
- Pop open the orange wire tab connected to the SD port with the plastic opening tool.
- ⓘ If there is tape covering your tab, remove it with the tweezers before you pop open the tab.

Step 5



- Using the orange tab, pull the SD port up and away from the device.

Step 6



- Using the plastic end of the tweezers pop up the orange tab connecting the SD port to the device.
- ⓘ There is a little indent below the orange tab to help get under this piece. It may be difficult to remove, push up hard.

To reassemble your device, follow these instructions in reverse order.

